

Datasheet for ABIN2855716  
**anti-GNAL antibody (Center)**

## 3 Images

[Go to Product page](#)

## Overview

Quantity:	100 µL
Target:	GNAL
Binding Specificity:	Center
Reactivity:	Human, Mouse
Host:	Rabbit
Clonality:	Polyclonal
Conjugate:	This GNAL antibody is un-conjugated
Application:	Western Blotting (WB), Immunohistochemistry (Paraffin-embedded Sections) (IHC (p))

## Product Details

Immunogen:	Recombinant protein encompassing a sequence within the center region of human GNAL. The exact sequence is proprietary.
Isotype:	IgG
Cross-Reactivity:	Rat (Rattus), Cow (Bovine)
Cross-Reactivity (Details):	Rat (100 %), Bovine (100 %)
Characteristics:	Rabbit Polyclonal antibody to GNAL (guanine nucleotide binding protein (G protein), alpha activating activity polypeptide, olfactory type) GNAL antibody
Purification:	Purified by antigen-affinity chromatography.

## Target Details

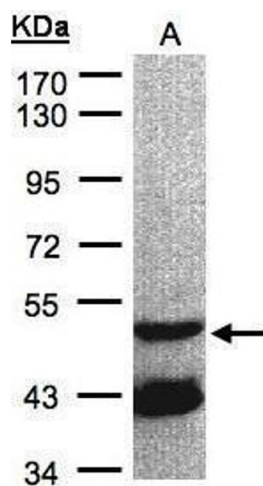
Target:	GNAL
Alternative Name:	GNAL ( <a href="#">GNAL Products</a> )
Molecular Weight:	44 kDa
Gene ID:	2774

## Application Details

Application Notes:	Suggested dilution Reference IHC (Formalin-fixed paraffin-embedded sections) 1:100-1:1000* Western blot 1:500-1:3000* Not tested in other applications. *Optimal dilutions/concentrations should be determined by the researcher.Suggested dilutionReferenceIHC (Formalin-fixed paraffin-embedded sections)1:100-1:1000* Western blot1:500-1:3000*
Comment:	Positive Control: Raji , mouse brain
Restrictions:	For Research Use only

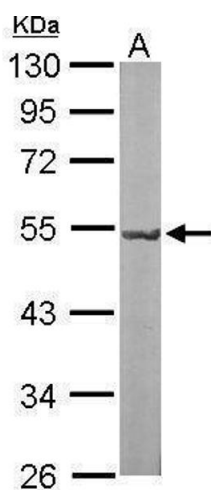
## Handling

Format:	Liquid
Concentration:	0.65 mg/mL
Buffer:	0.1M Tris, 0.1M Glycine, 10 % Glycerol ( pH 7). 0.01 % Thimerosal was added as a preservative.
Preservative:	Thimerosal (Merthiolate)
Precaution of Use:	This product contains Thimerosal (Merthiolate): a POISONOUS AND HAZARDOUS SUBSTANCE which should be handled by trained staff only.
Storage:	-20 °C
Storage Comment:	Keep as concentrated solution. Aliquot and store at -20°C or below. Avoid multiple freeze-thaw cycles.



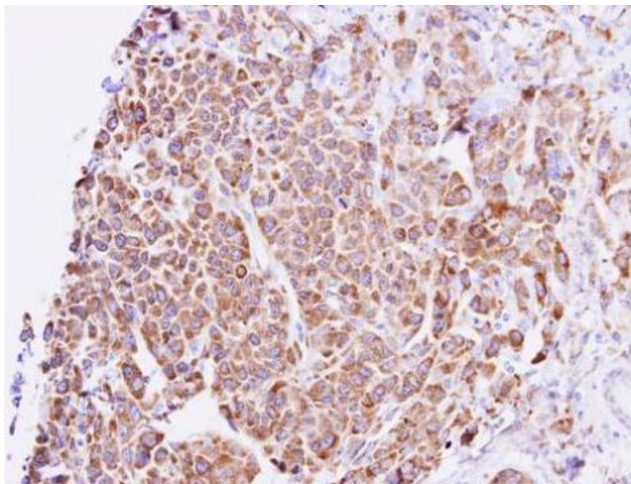
**Western Blotting**

**Image 1.** WB Image Sample(30 µg of whole cell lysate)  
A:Raji, 7.5% SDS PAGE antibody diluted at 1:1000



**Western Blotting**

**Image 2.** WB Image Sample (50 ug of whole cell lysate) A:  
Mouse brain 10% SDS PAGE antibody diluted at 1:1000



**Immunohistochemistry**

**Image 3.** IHC-P Image GNAL antibody detects GNAL protein  
at cytosol on NCI-N87 xenograft by immunohistochemical  
analysis. Sample: Paraffin-embedded NCI-N87 xenograft.  
GNAL antibody , dilution: 1:500.