

Datasheet for ABIN2855721

**anti-OAT antibody**

## 4 Images

[Go to Product page](#)

## Overview

Quantity:	100 µL
Target:	OAT
Reactivity:	Human
Host:	Rabbit
Clonality:	Polyclonal
Conjugate:	This OAT antibody is un-conjugated
Application:	Western Blotting (WB), Immunofluorescence (IF), Immunocytochemistry (ICC), Immunohistochemistry (Paraffin-embedded Sections) (IHC (p))

## Product Details

Immunogen:	Recombinant protein encompassing a sequence within the center region of human OAT. The exact sequence is proprietary.
Isotype:	IgG
Cross-Reactivity:	Human, Mouse
Characteristics:	Rabbit Polyclonal antibody to OAT (ornithine aminotransferase) OAT antibody [N1C3]
Purification:	Purified by antigen-affinity chromatography.

## Target Details

Target:	OAT
Alternative Name:	ornithine aminotransferase ( <a href="#">OAT Products</a> )

## Target Details

**Background:** This gene encodes the mitochondrial enzyme ornithine aminotransferase, which is a key enzyme in the pathway that converts arginine and ornithine into the major excitatory and inhibitory neurotransmitters glutamate and GABA. Mutations that result in a deficiency of this enzyme cause the autosomal recessive eye disease Gyrate Atrophy.

Cellular Localization: Mitochondrion matrix

**Molecular Weight:** 49 kDa

**Gene ID:** 4942

**UniProt:** [P04181](#)

## Application Details

**Application Notes:** WB: 1:1000-1:10000. ICC/IF: 1:100-1:1000. IHC-P: 1:100-1:1000. Optimal dilutions/concentrations should be determined by the researcher. Not tested in other applications.

**Comment:** Positive Control: Mouse brain , K562 , THP-1 , OAT-transfected 293T  
Validation: Overexpression

**Restrictions:** For Research Use only

## Handling

**Format:** Liquid

**Concentration:** 0.28 mg/mL

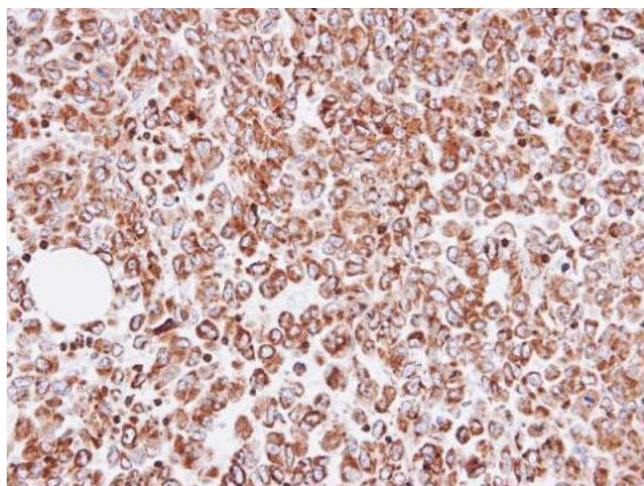
**Buffer:** 1XPBS ( pH 7), 1 % BSA, 20 % Glycerol, 0.025 % ProClin 300

**Preservative:** ProClin

**Precaution of Use:** This product contains ProClin: a POISONOUS AND HAZARDOUS SUBSTANCE which should be handled by trained staff only.

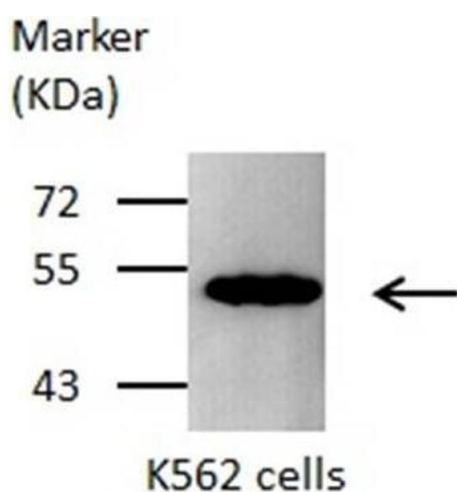
**Storage:** 4 °C,-20 °C

**Storage Comment:** Store as concentrated solution. Centrifuge briefly prior to opening vial. For short-term storage (1-2 weeks), store at 4°C. For long-term storage, aliquot and store at -20°C or below. Avoid multiple freeze-thaw cycles.



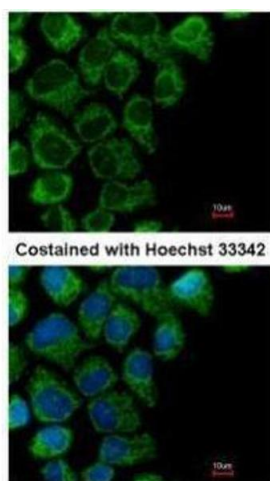
#### Immunohistochemistry

**Image 1.** IHC-P Image Immunohistochemical analysis of paraffin-embedded human gastric cancer, using OAT, antibody at 1:100 dilution.



#### Western Blotting

**Image 2.** WB Image Sample(30 ug whole cell lysate) A:293T 7.5% SDS PAGE antibody diluted at 1:500



#### Immunofluorescence

**Image 3.** ICC/IF Image Immunofluorescence analysis of methanol-fixed A431, using OAT, antibody at 1:200 dilution.

Please check the [product details page](#) for more images. Overall 4 images are available for ABIN2855721.