

Datasheet for ABIN2855723

anti-TPP1 antibody**2** Images[Go to Product page](#)

Overview

Quantity:	100 µL
Target:	TPP1
Reactivity:	Human
Host:	Rabbit
Clonality:	Polyclonal
Conjugate:	This TPP1 antibody is un-conjugated
Application:	Western Blotting (WB), Immunohistochemistry (Paraffin-embedded Sections) (IHC (p))

Product Details

Immunogen:	Recombinant protein encompassing a sequence within the center region of human TPP1. The exact sequence is proprietary.
Isotype:	IgG
Cross-Reactivity:	Human
Characteristics:	Rabbit Polyclonal antibody to TPP1 (tripeptidyl peptidase I) TPP1 antibody
Purification:	Purified by antigen-affinity chromatography.

Target Details

Target:	TPP1
Alternative Name:	tripeptidyl peptidase 1 (TPP1 Products)

Target Details

Background: This gene encodes a member of the sedolisin family of serine proteases. The protease functions in the lysosome to cleave N-terminal tripeptides from substrates, and has weaker endopeptidase activity. It is synthesized as a catalytically-inactive enzyme which is activated and auto-proteolyzed upon acidification. Mutations in this gene result in late-infantile neuronal ceroid lipofuscinosis, which is associated with the failure to degrade specific neuropeptides and a subunit of ATP synthase in the lysosome.

Cellular Localization: Lysosome , Melanosome

Molecular Weight: 61 kDa

Gene ID: 1200

UniProt: [O14773](#)

Pathways: [Cell Division Cycle](#), [ER-Nucleus Signaling](#)

Application Details

Application Notes: WB: 1:500-1:3000. IHC-P: 1:100-1:1000. Optimal dilutions/concentrations should be determined by the researcher. Not tested in other applications.

Comment: Positive Control: A431

Restrictions: For Research Use only

Handling

Format: Liquid

Concentration: 1 mg/mL

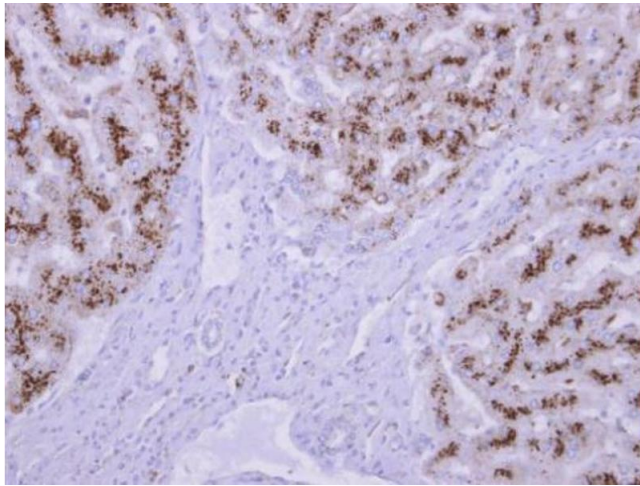
Buffer: 0.1M Tris-Glycine (pH 7), 10 % Glycerol, 0.01 % Thimerosal

Preservative: Thimerosal (Merthiolate)

Precaution of Use: This product contains Thimerosal (Merthiolate): a POISONOUS AND HAZARDOUS SUBSTANCE which should be handled by trained staff only.

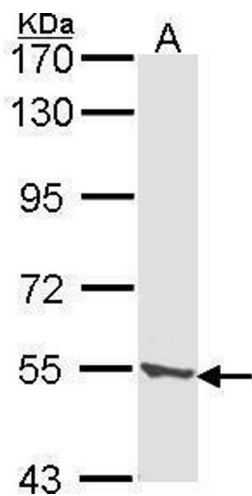
Storage: 4 °C,-20 °C

Storage Comment: Store as concentrated solution. Centrifuge briefly prior to opening vial. For short-term storage (1-2 weeks), store at 4°C. For long-term storage, aliquot and store at -20°C or below. Avoid multiple freeze-thaw cycles.



Immunohistochemistry

Image 1. IHC-P Image TPP1 antibody detects TPP1 protein at cytosol on human normal liver by immunohistochemical analysis. Sample: Paraffin-embedded normal liver. TPP1 antibody, dilution: 1:500.



Western Blotting

Image 2. WB Image Sample (30 ug of whole cell lysate) A: A431, 7.5% SDS PAGE CLN2 antibody antibody diluted at 1:1000