

Datasheet for ABIN2855724
anti-MPP2 antibody (Center)

2 Images

[Go to Product page](#)

Overview

Quantity:	100 µL
Target:	MPP2
Binding Specificity:	Center
Reactivity:	Human, Mouse
Host:	Rabbit
Clonality:	Polyclonal
Conjugate:	This MPP2 antibody is un-conjugated
Application:	Western Blotting (WB)

Product Details

Immunogen:	Recombinant protein encompassing a sequence within the center region of human MPP2. The exact sequence is proprietary.
Isotype:	IgG
Cross-Reactivity:	Rat (Rattus), Cow (Bovine)
Cross-Reactivity (Details):	Rat (98 %), Bovine (98 %)
Characteristics:	Rabbit Polyclonal antibody to MPP2 (membrane protein, palmitoylated 2 (MAGUK p55 subfamily member 2)) MPP2 antibody [N1C3]
Purification:	Purified by antigen-affinity chromatography.

Target Details

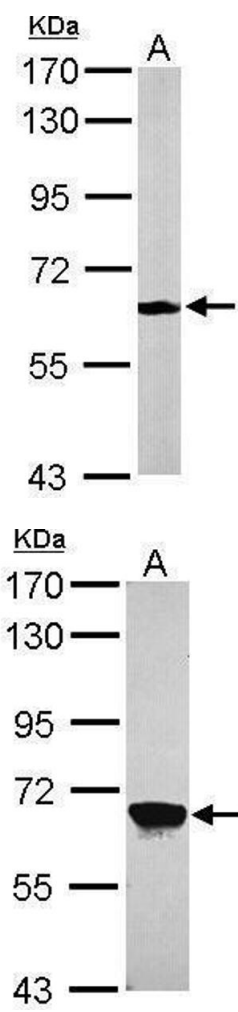
Target:	MPP2
Alternative Name:	MPP2 (MPP2 Products)
Background:	Palmitoylated membrane protein 2 is a member of a family of membrane-associated proteins termed MAGUKs (membrane-associated guanylate kinase homologs). MAGUKs interact with the cytoskeleton and regulate cell proliferation, signaling pathways, and intracellular junctions. Palmitoylated membrane protein 2 contains a conserved sequence, called the SH3 (src homology 3) motif, found in several other proteins that associate with the cytoskeleton and are suspected to play important roles in signal transduction.
Molecular Weight:	65 kDa
Gene ID:	4355

Application Details

Application Notes:	Suggested dilution Reference Western blot 1:500-1:3000* Not tested in other applications. *Optimal dilutions/concentrations should be determined by the researcher.Suggested dilutionReferenceWestern blot1:500-1:3000*
Comment:	Positive Control: A549 , HeLa , HCT116 , mouse brain
Restrictions:	For Research Use only

Handling

Format:	Liquid
Concentration:	0.61 mg/mL
Buffer:	0.1M Tris, 0.1M Glycine, 10 % Glycerol (pH 7). 0.01 % Thimerosal was added as a preservative.
Preservative:	Thimerosal (Merthiolate)
Precaution of Use:	This product contains Thimerosal (Merthiolate): a POISONOUS AND HAZARDOUS SUBSTANCE which should be handled by trained staff only.
Storage:	-20 °C
Storage Comment:	Keep as concentrated solution. Aliquot and store at -20°C or below. Avoid multiple freeze-thaw cycles.



Western Blotting

Image 1. WB Image Sample (50 ug of whole cell lysate) A:
Mouse brain 7.5% SDS PAGE antibody diluted at 1:1000

Western Blotting

Image 2. WB Image Sample (30 ug of whole cell lysate) A:
A549 7.5% SDS PAGE antibody diluted at 1:1000