

Datasheet for ABIN2855729

anti-TPK1 antibody

4 Images

[Go to Product page](#)

Overview

Quantity:	100 µL
Target:	TPK1
Reactivity:	Human
Host:	Rabbit
Clonality:	Polyclonal
Conjugate:	This TPK1 antibody is un-conjugated
Application:	Western Blotting (WB), Immunohistochemistry (Paraffin-embedded Sections) (IHC (p))

Product Details

Immunogen:	Recombinant protein encompassing a sequence within the center region of human TPK1. The exact sequence is proprietary.
Isotype:	IgG
Cross-Reactivity:	Human, Mouse
Characteristics:	Rabbit Polyclonal antibody to TPK1 (thiamin pyrophosphokinase 1) TPK1 antibody
Purification:	Purified by antigen-affinity chromatography.

Target Details

Target:	TPK1
Alternative Name:	thiamin pyrophosphokinase 1 (TPK1 Products)

Target Details

Background: This gene encodes a protein, that exists as a homodimer, which catalyzes the conversion of thiamine to thiamine pyrophosphate. Alternate transcriptional splice variants, encoding different isoforms, have been characterized.

Molecular Weight: 27 kDa

Gene ID: 27010

UniProt: [Q9H3S4](#)

Application Details

Application Notes: WB: 1:500-1:3000. IHC-P: 1:100-1:1000. Optimal dilutions/concentrations should be determined by the researcher. Not tested in other applications.

Comment: Positive Control: H1299 , Mouse liver

Restrictions: For Research Use only

Handling

Format: Liquid

Concentration: 0.96 mg/mL

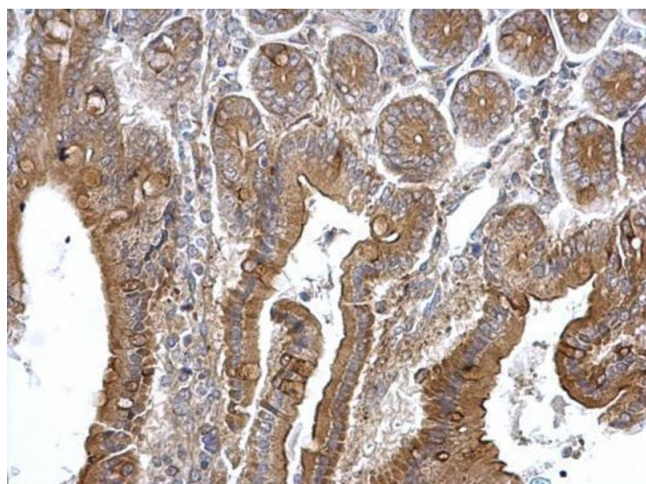
Buffer: 0.1M Tris-Glycine (pH 7), 10 % Glycerol, 0.01 % Thimerosal

Preservative: Thimerosal (Merthiolate)

Precaution of Use: This product contains Thimerosal (Merthiolate): a POISONOUS AND HAZARDOUS SUBSTANCE which should be handled by trained staff only.

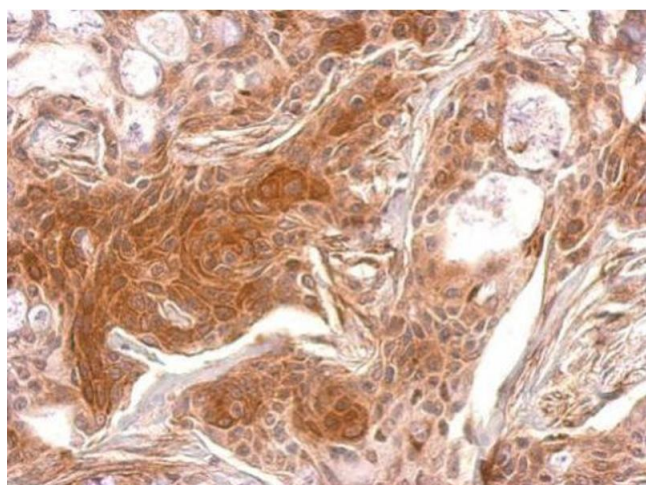
Storage: 4 °C,-20 °C

Storage Comment: Store as concentrated solution. Centrifuge briefly prior to opening vial. For short-term storage (1-2 weeks), store at 4°C. For long-term storage, aliquot and store at -20°C or below. Avoid multiple freeze-thaw cycles.



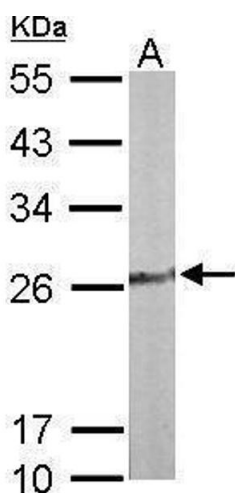
Immunohistochemistry

Image 1. IHC-P Image TPK1 antibody detects TPK1 protein at cytosol on mouse intestine by immunohistochemical analysis. Sample: Paraffin-embedded mouse intestine. TPK1 antibody , dilution: 1:500.



Immunohistochemistry

Image 2. IHC-P Image TPK1 antibody detects TPK1 protein at cytosol on Cal27 xenograft by immunohistochemical analysis. Sample: Paraffin-embedded Cal27 xenograft. TPK1 antibody , dilution: 1:500.



Western Blotting

Image 3. WB Image Sample (50 ug of whole cell lysate) A: Mouse liver 12% SDS PAGE antibody diluted at 1:1000

Please check the [product details page](#) for more images. Overall 4 images are available for ABIN2855729.