

Datasheet for ABIN2855731

**anti-IP6K1 antibody**

4 Images

1 Publication

[Go to Product page](#)

## Overview

Quantity:	100 µL
Target:	IP6K1
Reactivity:	Human
Host:	Rabbit
Clonality:	Polyclonal
Conjugate:	This IP6K1 antibody is un-conjugated
Application:	Western Blotting (WB), Immunoprecipitation (IP), Immunocytochemistry (ICC), Immunohistochemistry (Paraffin-embedded Sections) (IHC (p)), Immunofluorescence (IF)

## Product Details

Immunogen:	Recombinant protein encompassing a sequence within the center region of human IP6K1. The exact sequence is proprietary.
Isotype:	IgG
Specificity:	Knockdown/Knockout validation was supported by references (PMID:27701146)
Cross-Reactivity:	Human, Mouse
Characteristics:	Rabbit Polyclonal antibody to IP6K1 (inositol hexakisphosphate kinase 1) IP6K1 antibody
Purification:	Affinity purified by Protein A.
Grade:	KO Validated

## Target Details

Target:	IP6K1
Alternative Name:	inositol hexakisphosphate kinase 1 ( <a href="#">IP6K1 Products</a> )
Background:	<p>This gene encodes a protein that belongs to the inositol phosphokinase (IPK) family. This protein is likely responsible for the conversion of inositol hexakisphosphate (InsP6) to diphosphoinositol pentakisphosphate (InsP7/PP-InsP5). It may also convert 1,3,4,5,6-pentakisphosphate (InsP5) to PP-InsP4. Alternative splicing occurs for this gene, however, the full-length nature of all transcript variants has not yet been described.</p> <p>Cellular Localization: Cytoplasm , Nucleus</p>
Molecular Weight:	50 kDa
Gene ID:	9807
UniProt:	<a href="#">Q92551</a>

## Application Details

Application Notes:	WB: 1:500-1:10000. ICC/IF: 1:100-1:1000. IHC-P: 1:100-1:1000. Optimal dilutions/concentrations should be determined by the researcher. Not tested in other applications.
Comment:	<p>Positive Control: Jurkat , Raji , NCI-H929</p> <p>Validation: KO/KD, Overexpression</p>
Restrictions:	For Research Use only

## Handling

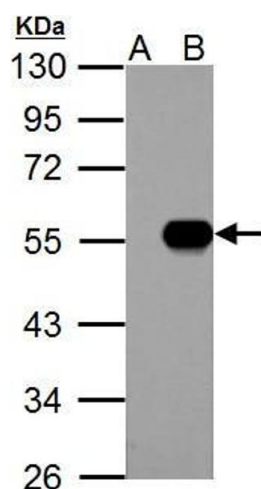
Format:	Liquid
Concentration:	0.22 mg/mL
Buffer:	1XPBS ( pH 7), 1 % BSA, 20 % Glycerol, 0.025 % ProClin 300
Preservative:	ProClin
Precaution of Use:	This product contains ProClin: a POISONOUS AND HAZARDOUS SUBSTANCE which should be handled by trained staff only.
Storage:	4 °C, -20 °C
Storage Comment:	Store as concentrated solution. Centrifuge briefly prior to opening vial. For short-term storage (1-2 weeks), store at 4°C. For long-term storage, aliquot and store at -20°C or below. Avoid

multiple freeze-thaw cycles.

## Publications

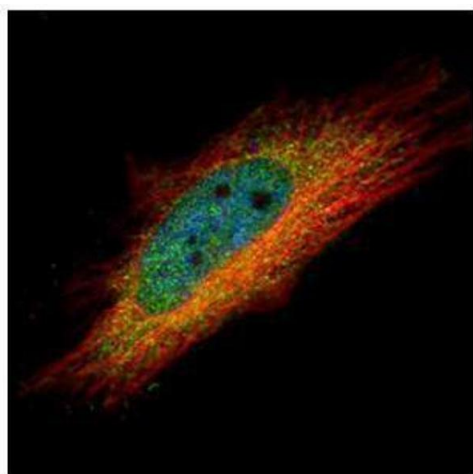
Product cited in: Piquet, Le Parc, Bai, Chevallier, Adam, Polo: "The Histone Chaperone FACT Coordinates H2A.X-Dependent Signaling and Repair of DNA Damage." in: **Molecular cell**, Vol. 72, Issue 5, pp. 888-901.e7, (2018) ([PubMed](#)).

## Validation report #104383 for Cleavage Under Targets and Release Using Nuclease (CUT&RUN)



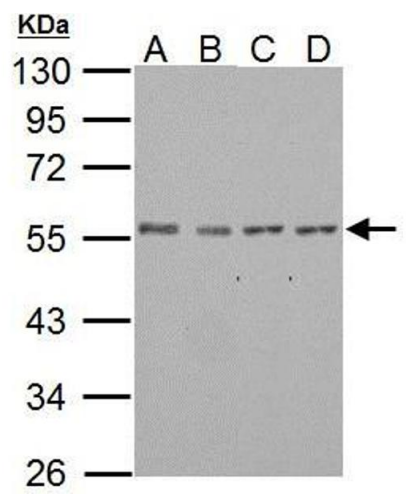
### Western Blotting

**Image 1.** WB Image IP6K1 antibody detects IP6K1 protein by western blot analysis. A. 30 µg 293T whole cell lysate/extract B. 30 µg whole cell lysate/extract of human IHPK1-transfected 293T cells 10 % SDS-PAGE IP6K1 antibody , dilution: 1:5000



### Immunofluorescence

**Image 2.** ICC/IF Image Confocal immunofluorescence analysis (Olympus FV10i) of paraformaldehyde-fixed HeLa, using IP6K1, antibody (Green) at 1:500 dilution. Alpha-tubulin filaments were labeled with (Red) at 1:2000.



**Western Blotting**

**Image 3.** WB Image IP6K1 antibody detects IP6K1 protein by western blot analysis. A. 30 µg Jurkat whole cell lysate/extract B. 30 µg Raji whole cell lysate/extract C. 30 µg THP-1 whole cell lysate/extract D. 30 µg NCI-H929 whole cell lysate/extract 10 % SDS-PAGE IP6K1 antibody , dilution: 1:1000

Please check the [product details page](#) for more images. Overall 4 images are available for ABIN2855731.