



[Go to Product page](#)

Datasheet for ABIN2855733

## anti-Cnpase antibody

3 Images

1 Publication

### Overview

|              |                                                                                                                                        |
|--------------|----------------------------------------------------------------------------------------------------------------------------------------|
| Quantity:    | 100 µL                                                                                                                                 |
| Target:      | Cnpase (CNP)                                                                                                                           |
| Reactivity:  | Human                                                                                                                                  |
| Host:        | Rabbit                                                                                                                                 |
| Clonality:   | Polyclonal                                                                                                                             |
| Conjugate:   | This Cnpase antibody is un-conjugated                                                                                                  |
| Application: | Western Blotting (WB), Immunohistochemistry (Paraffin-embedded Sections) (IHC (p)), Immunohistochemistry (Frozen Sections) (IHC (fro)) |

### Product Details

|                   |                                                                                                                             |
|-------------------|-----------------------------------------------------------------------------------------------------------------------------|
| Immunogen:        | Recombinant protein encompassing a sequence within the center region of human CNPase.<br>The exact sequence is proprietary. |
| Isotype:          | IgG                                                                                                                         |
| Cross-Reactivity: | Human, Mouse, Rat                                                                                                           |
| Characteristics:  | Rabbit Polyclonal antibody to CNP (2',3'-cyclic nucleotide 3' phosphodiesterase)<br>CNP antibody                            |
| Purification:     | Purified by antigen-affinity chromatography.                                                                                |
| Grade:            | KO Validated                                                                                                                |

### Target Details

|         |              |
|---------|--------------|
| Target: | Cnpase (CNP) |
|---------|--------------|

## Target Details

---

Alternative Name: 2',3'-cyclic nucleotide 3' phosphodiesterase ([CNP Products](#))

Background: Cellular Localization: Membrane , Melanosome

Molecular Weight: 48 kDa

Gene ID: 1267

UniProt: [P09543](#)

## Application Details

---

Application Notes: WB: 1:500-1:10000. IHC-P: 1:100-1:1000. IHC-Fr: 1:100-1:1000. Optimal dilutions/concentrations should be determined by the researcher. Not tested in other applications.

Comment: Positive Control: mouse brain , rat brain , HeLa  
Validation: KO/KD, Orthogonal

Restrictions: For Research Use only

## Handling

---

Format: Liquid

Concentration: 0.41 mg/mL

Buffer: 1XPBS pH 7, 20 % Glycerol, 0.025 % ProClin 300

Preservative: ProClin

Precaution of Use: This product contains ProClin: a POISONOUS AND HAZARDOUS SUBSTANCE which should be handled by trained staff only.

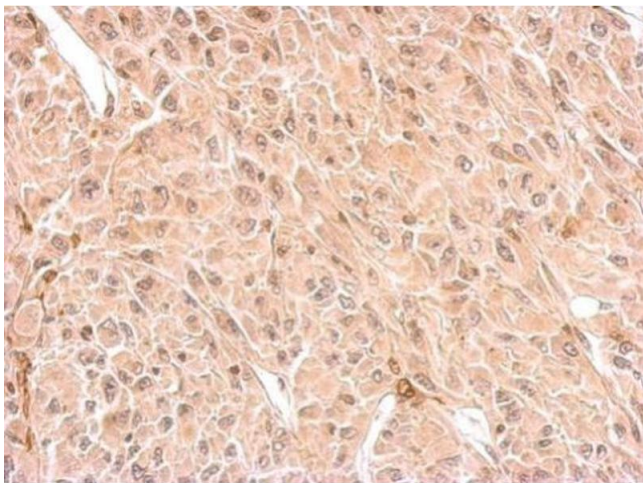
Storage: 4 °C, -20 °C

Storage Comment: Store as concentrated solution. Centrifuge briefly prior to opening vial. For short-term storage (1-2 weeks), store at 4°C. For long-term storage, aliquot and store at -20°C or below. Avoid multiple freeze-thaw cycles.

## Publications

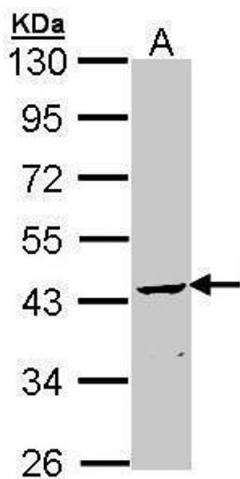
---

Product cited in: Shirozu, Iwano, Ogiso, Suzuki, Balboula, Bai, Kawahara, Kimura, Takahashi, Rulan, Kim, Yanagawa, Nagano, Imakawa, Takahashi: "Estrous cycle stage-dependent manner of type I interferon-stimulated genes induction in the bovine endometrium." in: **The Journal of reproduction and development**, Vol. 63, Issue 3, pp. 211-220, (2018) ([PubMed](#)).



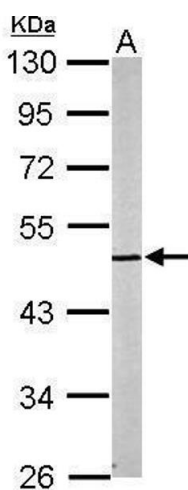
### Immunohistochemistry

**Image 1.** IHC-P Image CNP antibody detects CNP protein at cytosol on U87 xenograft by immunohistochemical analysis. Sample: Paraffin-embedded U87 xenograft. CNP antibody, dilution: 1:500.



### Western Blotting

**Image 2.** WB Image Sample (30 ug of whole cell lysate) A: Molt-4, 10% SDS PAGE antibody diluted at 1:1000



### Western Blotting

**Image 3.** WB Image Sample (20 ug of whole cell lysate) A: mouse brain 10% SDS PAGE antibody diluted at 1:5000