

Datasheet for ABIN2855735
anti-MOS antibody (Center)[Go to Product page](#)

1 Image

Overview

Quantity:	100 µL
Target:	MOS
Binding Specificity:	Center
Reactivity:	Human
Host:	Rabbit
Clonality:	Polyclonal
Conjugate:	This MOS antibody is un-conjugated
Application:	Western Blotting (WB)

Product Details

Immunogen:	Recombinant protein encompassing a sequence within the center region of human MOS. The exact sequence is proprietary.
Isotype:	IgG
Characteristics:	Rabbit Polyclonal antibody to MOS (v-mos Moloney murine sarcoma viral oncogene homolog) MOS antibody
Purification:	Purified by antigen-affinity chromatography.

Target Details

Target:	MOS
Alternative Name:	MOS (MOS Products)

Target Details

Background: MOS is a serine/threonine kinase that activates the MAP kinase cascade through direct phosphorylation of the MAP kinase activator MEK (MAP2K1, MIM 176872) (Prasad et al., 2008 [PubMed 18246541]).[supplied by OMIM]

Gene ID: 4342

Application Details

Application Notes: Suggested dilution Reference Western blot 1:500-1:3000* Not tested in other applications.
Optimal dilutions/concentrations should be determined by the researcher.Suggested dilutionReferenceWestern blot1:500-1:3000

Comment: Positive Control: AsPC-1

Restrictions: For Research Use only

Handling

Format: Liquid

Concentration: 1 mg/mL

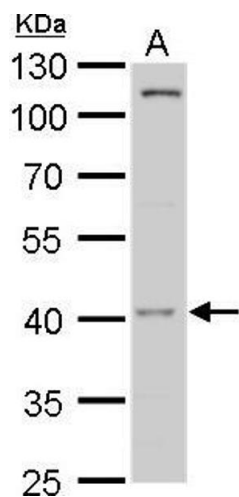
Buffer: 1XPBS, 20 % Glycerol (pH 7). 0.01 % Thimerosal was added as a preservative.

Preservative: Thimerosal (Merthiolate)

Precaution of Use: This product contains Thimerosal (Merthiolate): a POISONOUS AND HAZARDOUS SUBSTANCE which should be handled by trained staff only.

Storage: -20 °C

Storage Comment: Keep as concentrated solution. Aliquot and store at -20°C or below. Avoid multiple freeze-thaw cycles.



Western Blotting

Image 1. WB Image MOS antibody detects MOS protein by western blot analysis. A. 30 μ g AsPC-1 whole cell lysate/extract 10 % SDS-PAGE MOS antibody , dilution: 1:500