

Datasheet for ABIN2855737
anti-IFI30 antibody (Center)[Go to Product page](#)

2 Images

Overview

Quantity:	100 µL
Target:	IFI30
Binding Specificity:	Center
Reactivity:	Human
Host:	Rabbit
Clonality:	Polyclonal
Conjugate:	This IFI30 antibody is un-conjugated
Application:	Western Blotting (WB), Immunohistochemistry (Paraffin-embedded Sections) (IHC (p))

Product Details

Immunogen:	Recombinant protein encompassing a sequence within the center region of human GILT. The exact sequence is proprietary.
Isotype:	IgG
Characteristics:	Rabbit Polyclonal antibody to GILT (interferon, gamma-inducible protein 30) GILT antibody
Purification:	Purified by antigen-affinity chromatography.

Target Details

Target:	IFI30
Alternative Name:	GILT (IFI30 Products)

Target Details

Background: The protein encoded by this gene is a lysosomal thiol reductase that at low pH can reduce protein disulfide bonds. The enzyme is expressed constitutively in antigen-presenting cells and induced by gamma-interferon in other cell types. This enzyme has an important role in MHC class II-restricted antigen processing.

Molecular Weight: 28 kDa

Gene ID: 10437

Application Details

Application Notes: Suggested dilution Reference IHC (Formalin-fixed paraffin-embedded sections) 1:100-1:1000* Western blot 1:500-1:3000* Not tested in other applications. *Optimal dilutions/concentrations should be determined by the researcher. Suggested dilution Reference IHC (Formalin-fixed paraffin-embedded sections) 1:100-1:1000* Western blot 1:500-1:3000*

Comment: Positive Control: Raji

Restrictions: For Research Use only

Handling

Format: Liquid

Concentration: 1 mg/mL

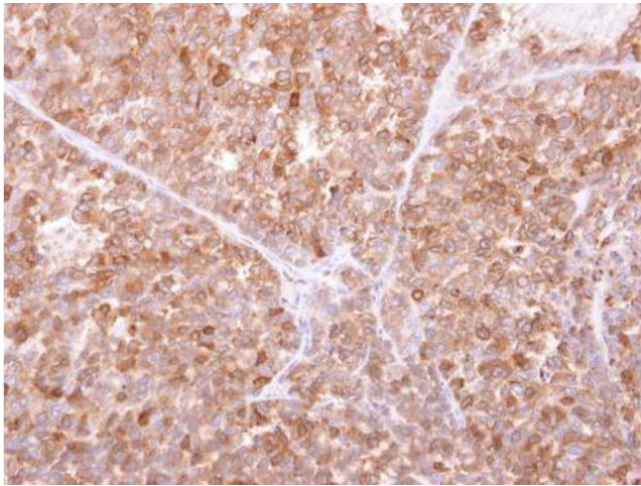
Buffer: 0.1M Tris, 0.1M Glycine, 10 % Glycerol (pH 7). 0.01 % Thimerosal was added as a preservative.

Preservative: Thimerosal (Merthiolate)

Precaution of Use: This product contains Thimerosal (Merthiolate): a POISONOUS AND HAZARDOUS SUBSTANCE which should be handled by trained staff only.

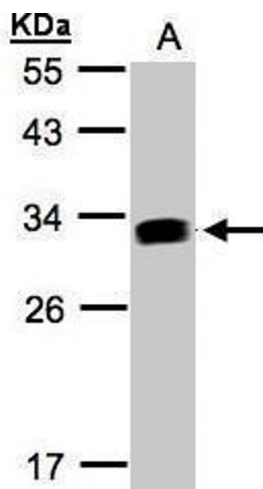
Storage: -20 °C

Storage Comment: Keep as concentrated solution. Aliquot and store at -20°C or below. Avoid multiple freeze-thaw cycles.



Immunohistochemistry

Image 1. IHC-P Image GILT antibody detects IFI30 protein at cytosol on AGS xenograft by immunohistochemical analysis. Sample: Paraffin-embedded AGS xenograft. GILT antibody , dilution: 1:500.



Western Blotting

Image 2. WB Image Sample(30 ug whole cell lysate) A:Raji , 12% SDS PAGE antibody diluted at 1:1000