

Datasheet for ABIN2855739
anti-PRSS8 antibody (Center)[Go to Product page](#)

2 Images

Overview

Quantity:	100 µL
Target:	PRSS8
Binding Specificity:	Center
Reactivity:	Human
Host:	Rabbit
Clonality:	Polyclonal
Conjugate:	This PRSS8 antibody is un-conjugated
Application:	Western Blotting (WB), Immunohistochemistry (Paraffin-embedded Sections) (IHC (p))

Product Details

Immunogen:	Recombinant protein encompassing a sequence within the center region of human Proastasin. The exact sequence is proprietary.
Isotype:	IgG
Characteristics:	Rabbit polyclonal antibody to Proastasin (protease, serine, 8) Proastasin antibody [N1C2]
Purification:	Purified by antigen-affinity chromatography.

Target Details

Target:	PRSS8
Alternative Name:	Proastasin (PRSS8 Products)

Target Details

Background:	<p>This gene encodes a trypsinogen, which is a member of the trypsin family of serine proteases. This enzyme is highly expressed in prostate epithelia and is one of several proteolytic enzymes found in seminal fluid. The proprotein is cleaved to produce a light chain and a heavy chain which are associated by a disulfide bond. It is active on peptide linkages involving the carboxyl group of lysine or arginine.</p> <p>Cellular Localization: Proastasin: Cell membrane, Single-pass membrane protein , Proastasin light chain: Secreted , extracellular space , Proastasin heavy chain: Secreted</p>
-------------	--

Molecular Weight:	36 kDa
-------------------	--------

Gene ID:	5652
----------	------

Application Details

Application Notes:	<p>Suggested dilution Reference IHC (Formalin-fixed paraffin-embedded sections) 1:100-1:1000* Western blot 1:500-1:3000* Not tested in other applications. *Optimal dilutions/concentrations should be determined by the researcher.Suggested dilutionReferenceIHC (Formalin-fixed paraffin-embedded sections)1:100-1:1000* Western blot1:500-1:3000*</p>
--------------------	---

Comment:	Positive Control: 293T , H1299 , HeLaS3 , Molt-4 , Raji
----------	---

Restrictions:	For Research Use only
---------------	-----------------------

Handling

Format:	Liquid
---------	--------

Concentration:	1 mg/mL
----------------	---------

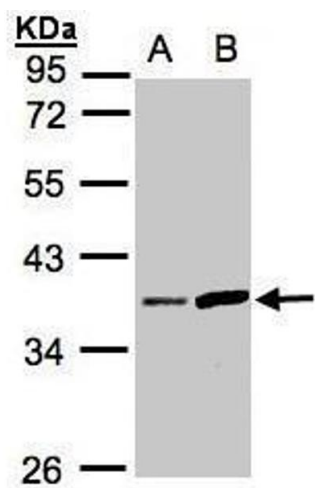
Buffer:	0.1M Tris, 0.1M Glycine, 10 % Glycerol (pH 7). 0.01 % Thimerosal was added as a preservative.
---------	--

Preservative:	Thimerosal (Merthiolate)
---------------	--------------------------

Precaution of Use:	This product contains Thimerosal (Merthiolate): a POISONOUS AND HAZARDOUS SUBSTANCE which should be handled by trained staff only.
--------------------	--

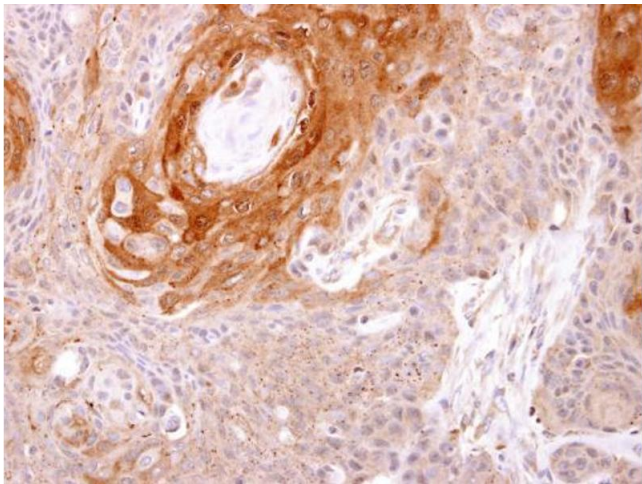
Storage:	-20 °C
----------	--------

Storage Comment:	Keep as concentrated solution. Aliquot and store at -20°C or below. Avoid multiple freeze-thaw cycles.
------------------	--



Western Blotting

Image 1. WB Image Sample(30 ug whole cell lysate) A:HeLa S3, B:Raji , 10% SDS PAGE antibody diluted at 1:1000



Immunohistochemistry

Image 2. IHC-P Image Prostatin antibody [N1C2] detects Prostatin protein at cytosol on Ca922 xenograft by immunohistochemical analysis. Sample: Paraffin-embedded Ca922 xenograft. Prostatin antibody [N1C2] , dilution: 1:250.