

Datasheet for ABIN2855741

anti-TULP1 antibody

3 Images

[Go to Product page](#)

Overview

Quantity:	100 µL
Target:	TULP1
Reactivity:	Human
Host:	Rabbit
Clonality:	Polyclonal
Conjugate:	This TULP1 antibody is un-conjugated
Application:	Western Blotting (WB), Immunofluorescence (IF), Immunocytochemistry (ICC), Immunohistochemistry (Paraffin-embedded Sections) (IHC (p))

Product Details

Immunogen:	Recombinant protein encompassing a sequence within the center region of human TULP1. The exact sequence is proprietary.
Isotype:	IgG
Cross-Reactivity:	Human
Characteristics:	Rabbit Polyclonal antibody to TULP1 (tubby like protein 1) TULP1 antibody [C1C3]
Purification:	Purified by antigen-affinity chromatography.

Target Details

Target:	TULP1
Alternative Name:	tubby like protein 1 (TULP1 Products)

Target Details

Background: This gene encodes a member of the tubby-like gene family (TULPs). Members of this family have been identified in plants, vertebrates, and invertebrates and encode proteins of unknown function. TULP proteins share a conserved C-terminal region of approximately 200 amino acid residues. Mutations in this gene may be associated with retinitis pigmentosa.

Molecular Weight: 61 kDa

Gene ID: 7287

UniProt: [O00294](#)

Pathways: [RTK Signaling](#)

Application Details

Application Notes: WB: 1:500-1:3000. ICC/IF: 1:100-1:1000. IHC-P: 1:100-1:1000. Optimal dilutions/concentrations should be determined by the researcher. Not tested in other applications.

Comment: Positive Control: 293T , A431 , H1299 , HeLaS3 , HepG2 , Molt-4 , Raji

Restrictions: For Research Use only

Handling

Format: Liquid

Concentration: 0.45 mg/mL

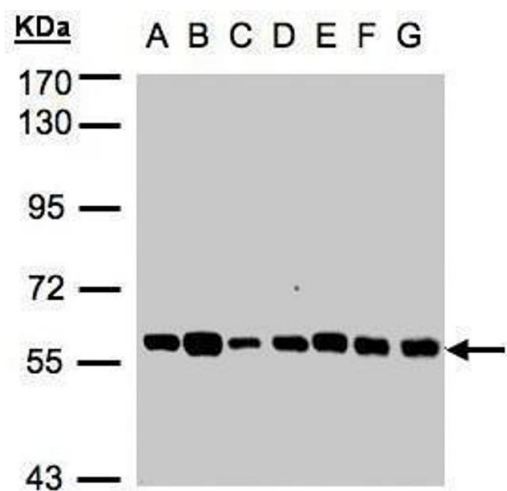
Buffer: 0.1M Tris-Glycine (pH 7), 10 % Glycerol, 0.01 % Thimerosal

Preservative: Thimerosal (Merthiolate)

Precaution of Use: This product contains Thimerosal (Merthiolate): a POISONOUS AND HAZARDOUS SUBSTANCE which should be handled by trained staff only.

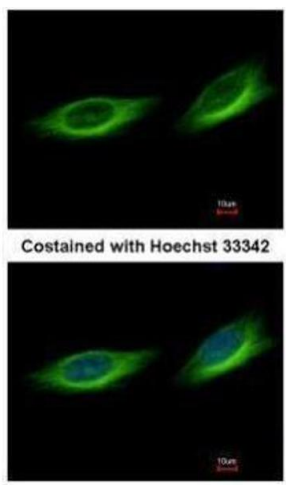
Storage: 4 °C,-20 °C

Storage Comment: Store as concentrated solution. Centrifuge briefly prior to opening vial. For short-term storage (1-2 weeks), store at 4°C. For long-term storage, aliquot and store at -20°C or below. Avoid multiple freeze-thaw cycles.



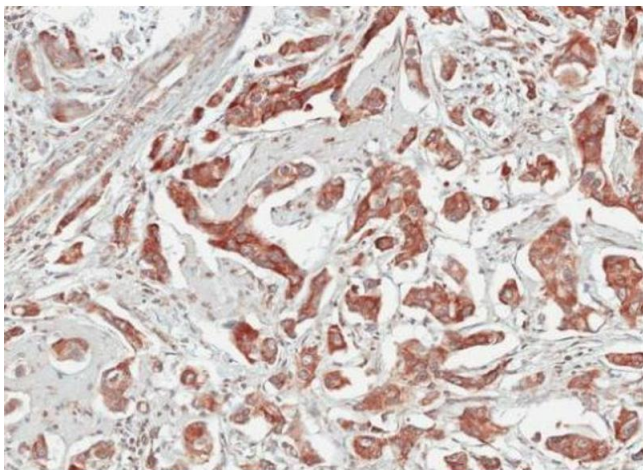
Western Blotting

Image 1. WB Image Sample(30 ug whole cell lysate) A: 293T B: A431 , C: H1299 D: HeLa S3 , E: Hep G2 , F: MOLT4 , G: Raji , 7.5% SDS PAGE antibody diluted at 1:1000



Immunofluorescence

Image 2. ICC/IF Image Immunofluorescence analysis of methanol-fixed HeLa, using TULP1, antibody at 1:500 dilution.



Immunohistochemistry

Image 3. IHC-P Image Immunohistochemical analysis of paraffin-embedded human breast cancer, using TULP1, antibody at 1:100 dilution.