

Datasheet for ABIN2855742  
**anti-Cathepsin S antibody**

## 3 Images

[Go to Product page](#)

## Overview

Quantity:	100 µL
Target:	Cathepsin S (CTSS)
Reactivity:	Human
Host:	Rabbit
Clonality:	Polyclonal
Conjugate:	This Cathepsin S antibody is un-conjugated
Application:	Western Blotting (WB), Immunohistochemistry (Paraffin-embedded Sections) (IHC (p))

## Product Details

Immunogen:	Recombinant protein encompassing a sequence within the center region of human Cathepsin S. The exact sequence is proprietary.
Isotype:	IgG
Cross-Reactivity:	Human, Rat
Characteristics:	Rabbit Polyclonal antibody to Cathepsin S (cathepsin S) Cathepsin S antibody
Purification:	Purified by antigen-affinity chromatography.

## Target Details

Target:	Cathepsin S (CTSS)
Alternative Name:	cathepsin S ( <a href="#">CTSS Products</a> )

## Target Details

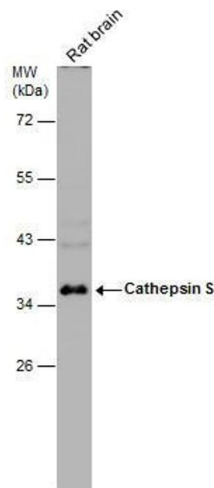
Background:	The protein encoded by this gene, a member of the peptidase C1 family, is a lysosomal cysteine proteinase that may participate in the degradation of antigenic proteins to peptides for presentation on MHC class II molecules. The encoded protein can function as an elastase over a broad pH range in alveolar macrophages. Transcript variants utilizing alternative polyadenylation signals exist for this gene.  Cellular Localization: Lysosome
Molecular Weight:	37 kDa
Gene ID:	1520
UniProt:	<a href="#">P25774</a>
Pathways:	<a href="#">Activation of Innate immune Response</a> , <a href="#">Toll-Like Receptors Cascades</a>

## Application Details

Application Notes:	WB: 1:500-1:3000. IHC-P: 1:100-1:1000. Optimal dilutions/concentrations should be determined by the researcher. Not tested in other applications.
Comment:	Positive Control: HeLa , rat brain
Restrictions:	For Research Use only

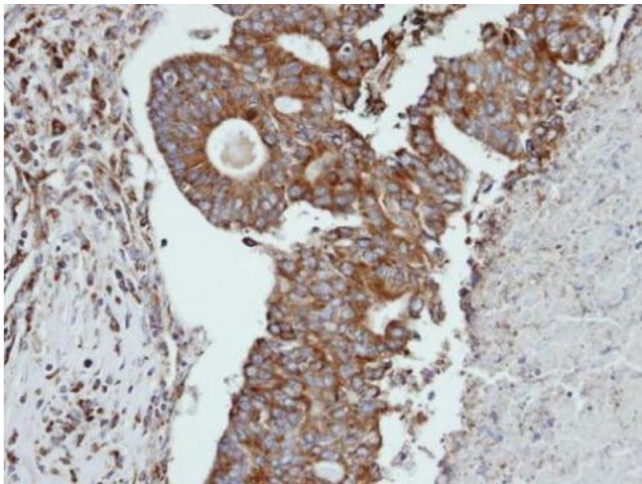
## Handling

Format:	Liquid
Concentration:	0.67 mg/mL
Buffer:	0.1M Tris-Glycine ( pH 7), 10 % Glycerol, 0.01 % Thimerosal
Preservative:	Thimerosal (Merthiolate)
Precaution of Use:	This product contains Thimerosal (Merthiolate): a POISONOUS AND HAZARDOUS SUBSTANCE which should be handled by trained staff only.
Storage:	4 °C,-20 °C
Storage Comment:	Store as concentrated solution. Centrifuge briefly prior to opening vial. For short-term storage (1-2 weeks), store at 4°C. For long-term storage, aliquot and store at -20°C or below. Avoid multiple freeze-thaw cycles.



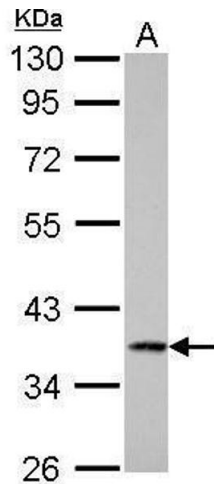
**Western Blotting**

**Image 1.** WB Image Rat tissue extract (50 µg) was separated by 10% SDS-PAGE, and the membrane was blotted with Cathepsin S antibody , diluted at 1:1000.



**Immunohistochemistry**

**Image 2.** IHC-P Image Immunohistochemical analysis of paraffin-embedded human endometrial ovarian cancer, using CTSS, antibody at 1:100 dilution.



**Western Blotting**

**Image 3.** WB Image Cathepsin S antibody detects CTSS protein by Western blot analysis. A. 30 µg HeLa whole cell lysate/extract 10 % SDS-PAGE Cathepsin S antibody , dilution: 1:1000