

Datasheet for ABIN2855746

anti-Thimet Oligopeptidase 1 antibody[Go to Product page](#)**1** Image

Overview

Quantity:	100 µL
Target:	Thimet Oligopeptidase 1 (THOP1)
Reactivity:	Human
Host:	Rabbit
Clonality:	Polyclonal
Conjugate:	This Thimet Oligopeptidase 1 antibody is un-conjugated
Application:	Western Blotting (WB)

Product Details

Immunogen:	Recombinant protein encompassing a sequence within the center region of human Thimet Oligopeptidase. The exact sequence is proprietary.
Isotype:	IgG
Cross-Reactivity:	Human
Characteristics:	Rabbit polyclonal antibody to Thimet Oligopeptidase (thimet oligopeptidase 1) Thimet Oligopeptidase antibody [N2C2], Internal
Purification:	Purified by antigen-affinity chromatography.

Target Details

Target:	Thimet Oligopeptidase 1 (THOP1)
Alternative Name:	thimet oligopeptidase 1 (THOP1 Products)

Target Details

Background: Involved in the metabolism of neuropeptides under 20 amino acid residues long. Involved in cytoplasmic peptide degradation. Able to degrade the beta-amyloid precursor protein and generate amyloidogenic fragments.

Cellular Localization: Cytoplasm

Molecular Weight: 79 kDa

Gene ID: 7064

UniProt: [P52888](#)

Application Details

Application Notes: WB: 1:1000-1:10000. Optimal dilutions/concentrations should be determined by the researcher. Not tested in other applications.

Comment: Positive Control: A431

Restrictions: For Research Use only

Handling

Format: Liquid

Concentration: 0.93 mg/mL

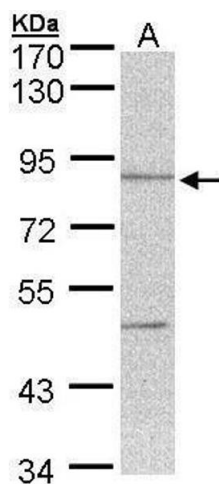
Buffer: 0.1M Tris-Glycine (pH 7), 10 % Glycerol, 0.01 % Thimerosal

Preservative: Thimerosal (Merthiolate)

Precaution of Use: This product contains Thimerosal (Merthiolate): a POISONOUS AND HAZARDOUS SUBSTANCE which should be handled by trained staff only.

Storage: 4 °C,-20 °C

Storage Comment: Store as concentrated solution. Centrifuge briefly prior to opening vial. For short-term storage (1-2 weeks), store at 4°C. For long-term storage, aliquot and store at -20°C or below. Avoid multiple freeze-thaw cycles.



Western Blotting

Image 1. WB Image Sample (30 ug of whole cell lysate) A:
A431 , 7.5% SDS PAGE antibody diluted at 1:5000