

Datasheet for ABIN2855756

anti-PRPS2 antibody**3** Images[Go to Product page](#)

Overview

Quantity:	100 µL
Target:	PRPS2
Reactivity:	Human
Host:	Rabbit
Clonality:	Polyclonal
Conjugate:	This PRPS2 antibody is un-conjugated
Application:	Western Blotting (WB), Immunofluorescence (IF), Immunohistochemistry (Paraffin-embedded Sections) (IHC (p)), Immunocytochemistry (ICC)

Product Details

Immunogen:	Recombinant protein encompassing a sequence within the center region of human PRPS2. The exact sequence is proprietary.
Isotype:	IgG
Cross-Reactivity:	Human
Characteristics:	Rabbit polyclonal antibody to PRPS2 (phosphoribosyl pyrophosphate synthetase 2) PRPS2 antibody [N1C3]
Purification:	Purified by antigen-affinity chromatography.

Target Details

Target:	PRPS2
Alternative Name:	phosphoribosyl pyrophosphate synthetase 2 (PRPS2 Products)

Target Details

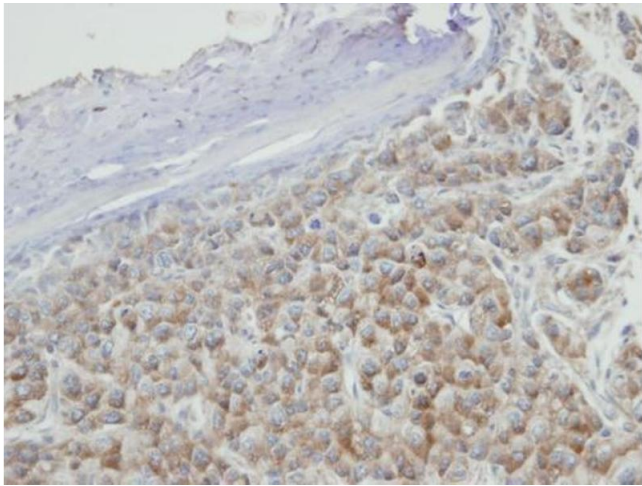
Background:	This gene encodes a phosphoribosyl pyrophosphate synthetase that plays a central role in the synthesis of purines and pyrimidines. The encoded protein catalyzes the synthesis of 5-phosphoribosyl 1-pyrophosphate from ATP and D-ribose 5-phosphate. Alternate splicing results in multiple transcript variants.
Molecular Weight:	35 kDa
Gene ID:	5634
UniProt:	P11908
Pathways:	Ribonucleoside Biosynthetic Process

Application Details

Application Notes:	WB: 1:500-1:3000. ICC/IF: 1:100-1:1000. IHC-P: 1:100-1:1000. Optimal dilutions/concentrations should be determined by the researcher. Not tested in other applications.
Comment:	Positive Control: HepG2
Restrictions:	For Research Use only

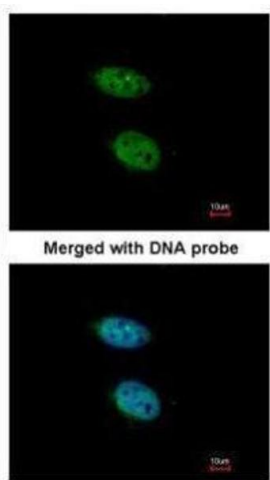
Handling

Format:	Liquid
Concentration:	0.91 mg/mL
Buffer:	0.1M Tris-Glycine (pH 7), 10 % Glycerol, 0.01 % Thimerosal
Preservative:	Thimerosal (Merthiolate)
Precaution of Use:	This product contains Thimerosal (Merthiolate): a POISONOUS AND HAZARDOUS SUBSTANCE which should be handled by trained staff only.
Storage:	4 °C,-20 °C
Storage Comment:	Store as concentrated solution. Centrifuge briefly prior to opening vial. For short-term storage (1-2 weeks), store at 4°C. For long-term storage, aliquot and store at -20°C or below. Avoid multiple freeze-thaw cycles.



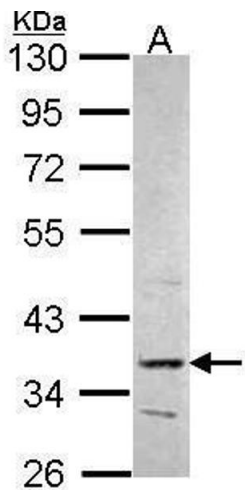
Immunohistochemistry

Image 1. IHC-P Image Immunohistochemical analysis of paraffin-embedded Hep3B xenograft, using PRPS2, antibody at 1:100 dilution.



Immunofluorescence

Image 2. ICC/IF Image Immunofluorescence analysis of paraformaldehyde-fixed HeLa, using PRPS2, antibody at 1:200 dilution.



Western Blotting

Image 3. WB Image Sample (30 ug of whole cell lysate) A: Hep G2 , 10% SDS PAGE PRPS2 antibody antibody diluted at 1:1000