



[Go to Product page](#)

Datasheet for ABIN2855765
anti-EDIL3 antibody (Center)

2 Images

Overview

| | |
|----------------------|--|
| Quantity: | 100 µL |
| Target: | EDIL3 (DEL1) |
| Binding Specificity: | Center |
| Reactivity: | Human, Mouse |
| Host: | Rabbit |
| Clonality: | Polyclonal |
| Conjugate: | This EDIL3 antibody is un-conjugated |
| Application: | Western Blotting (WB), Immunohistochemistry (Paraffin-embedded Sections) (IHC (p)) |

Product Details

| | |
|-----------------------------|---|
| Immunogen: | Recombinant protein encompassing a sequence within the center region of human EDIL3. The exact sequence is proprietary. |
| Isotype: | IgG |
| Cross-Reactivity: | Xenopus laevis, Xenopus tropicalis |
| Cross-Reactivity (Details): | Xenopus laevis (89 %), Xenopus tropicalis (90 %) |
| Characteristics: | Rabbit Polyclonal antibody to EDIL3 (EGF-like repeats and discoidin I-like domains 3) EDIL3 antibody |
| Purification: | Purified by antigen-affinity chromatography. |

Target Details

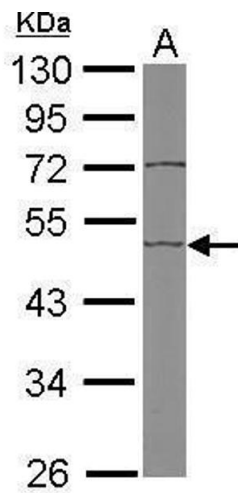
| | |
|-------------------|---|
| Target: | EDIL3 (DEL1) |
| Alternative Name: | EDIL3 (DEL1 Products) |
| Background: | The protein encoded by this gene is an integrin ligand. It plays an important role in mediating angiogenesis and may be important in vessel wall remodeling and development. It also influences endothelial cell behavior. Cellular Localization: Secreted |
| Molecular Weight: | 54 kDa |
| Gene ID: | 10085 |

Application Details

| | |
|--------------------|---|
| Application Notes: | Suggested dilution Reference IHC (Formalin-fixed paraffin-embedded sections) 1:100-1:1000* Western blot 1:500-1:3000* Not tested in other applications. *Optimal dilutions/concentrations should be determined by the researcher.Suggested dilutionReferenceIHC (Formalin-fixed paraffin-embedded sections)1:100-1:1000* Western blot1:500-1:3000* |
| Comment: | Positive Control: Mouse brain |
| Restrictions: | For Research Use only |

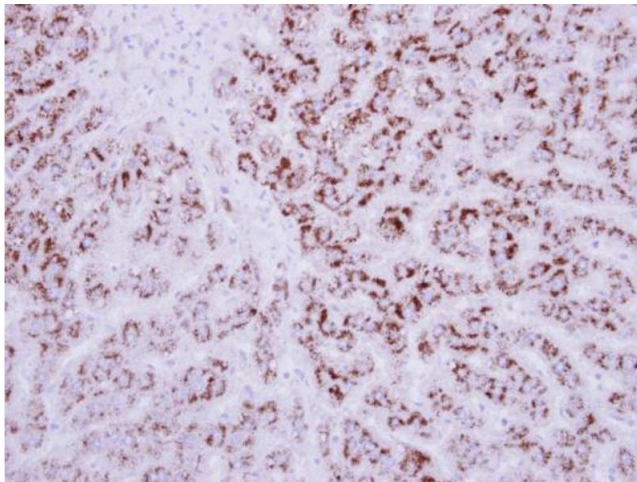
Handling

| | |
|--------------------|--|
| Format: | Liquid |
| Concentration: | 0.82 mg/mL |
| Buffer: | 0.1M Tris, 0.1M Glycine, 10 % Glycerol (pH 7). 0.01 % Thimerosal was added as a preservative. |
| Preservative: | Thimerosal (Merthiolate) |
| Precaution of Use: | This product contains Thimerosal (Merthiolate): a POISONOUS AND HAZARDOUS SUBSTANCE which should be handled by trained staff only. |
| Storage: | -20 °C |
| Storage Comment: | Keep as concentrated solution. Aliquot and store at -20°C or below. Avoid multiple freeze-thaw cycles. |



Western Blotting

Image 1. WB Image Sample (50 ug of whole cell lysate) A:
Mouse brain 10% SDS PAGE antibody diluted at 1:1000



Immunohistochemistry

Image 2. IHC-P Image Immunohistochemical analysis of
paraffin-embedded human breast cancer, using EDIL3,
antibody at 1:250 dilution.