

Datasheet for ABIN2855767

**anti-FDFT1 antibody**[Go to Product page](#)**2** Images

## Overview

Quantity:	100 µL
Target:	FDFT1
Reactivity:	Human
Host:	Rabbit
Clonality:	Polyclonal
Conjugate:	This FDFT1 antibody is un-conjugated
Application:	Western Blotting (WB), Immunohistochemistry (Paraffin-embedded Sections) (IHC (p))

## Product Details

Immunogen:	Recombinant protein encompassing a sequence within the center region of human FDFT1. The exact sequence is proprietary.
Isotype:	IgG
Cross-Reactivity:	Human
Characteristics:	Rabbit Polyclonal antibody to FDFT1 (farnesyl-diphosphate farnesyltransferase 1) FDFT1 antibody [N2C3]
Purification:	Purified by antigen-affinity chromatography.

## Target Details

Target:	FDFT1
Alternative Name:	farnesyl-diphosphate farnesyltransferase 1 ( <a href="#">FDFT1 Products</a> )

## Target Details

**Background:** This gene encodes a membrane-associated enzyme located at a branch point in the mevalonate pathway. The encoded protein is the first specific enzyme in cholesterol biosynthesis, catalyzing the dimerization of two molecules of farnesyl diphosphate in a two-step reaction to form squalene.

Cellular Localization: Endoplasmic reticulum membrane, Multi-pass membrane protein

**Molecular Weight:** 48 kDa

**Gene ID:** 2222

**UniProt:** [P37268](#)

**Pathways:** [Regulation of Lipid Metabolism by PPARalpha](#)

## Application Details

**Application Notes:** WB: 1:500-1:3000. IHC-P: 1:100-1:1000. Optimal dilutions/concentrations should be determined by the researcher. Not tested in other applications.

**Restrictions:** For Research Use only

## Handling

**Format:** Liquid

**Concentration:** 0.55 mg/mL

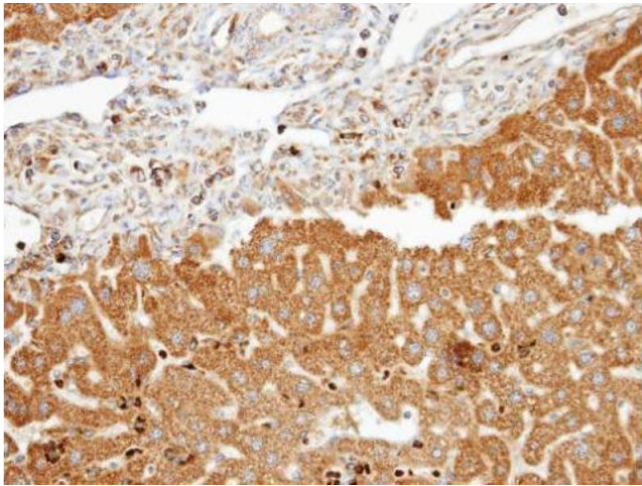
**Buffer:** 0.1M Tris-Glycine ( pH 7), 10 % Glycerol, 0.01 % Thimerosal

**Preservative:** Thimerosal (Merthiolate)

**Precaution of Use:** This product contains Thimerosal (Merthiolate): a POISONOUS AND HAZARDOUS SUBSTANCE which should be handled by trained staff only.

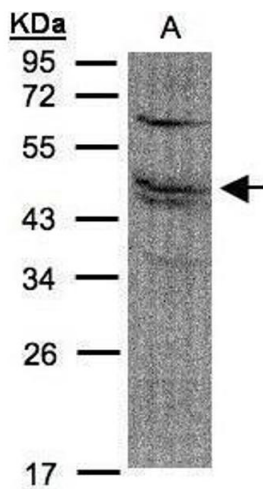
**Storage:** 4 °C,-20 °C

**Storage Comment:** Store as concentrated solution. Centrifuge briefly prior to opening vial. For short-term storage (1-2 weeks), store at 4°C. For long-term storage, aliquot and store at -20°C or below. Avoid multiple freeze-thaw cycles.



Immunohistochemistry

**Image 1.** IHC-P Image Immunohistochemical analysis of paraffin-embedded human liver, using FDFT1, antibody at 1:100 dilution.



Western Blotting

**Image 2.** WB Image Sample(30 µg of whole cell lysate) A:A431, 12% SDS PAGE antibody diluted at 1:1500