

Datasheet for ABIN2855768

anti-ZNF165 antibody[Go to Product page](#)**2** Images

Overview

Quantity:	100 µL
Target:	ZNF165
Reactivity:	Human
Host:	Rabbit
Clonality:	Polyclonal
Conjugate:	This ZNF165 antibody is un-conjugated
Application:	Western Blotting (WB), Immunohistochemistry (Paraffin-embedded Sections) (IHC (p))

Product Details

Immunogen:	Recombinant protein encompassing a sequence within the center region of human ZNF165. The exact sequence is proprietary.
Isotype:	IgG
Cross-Reactivity:	Human
Characteristics:	Rabbit polyclonal antibody to ZNF165 (zinc finger protein 165) ZNF165 antibody [N2C3]
Purification:	Purified by antigen-affinity chromatography.

Target Details

Target:	ZNF165
Alternative Name:	zinc finger protein 165 (ZNF165 Products)

Target Details

Background: This gene encodes a member of the Kruppel family of zinc finger proteins. Members of this DNA-binding protein family act as transcriptional regulators. This gene is located within a cluster of zinc finger family members. The encoded protein may play a role in spermatogenesis.

Cellular Localization: Nucleus

Molecular Weight: 56 kDa

Gene ID: 7718

UniProt: [P49910](#)

Application Details

Application Notes: WB: 1:500-1:3000. IHC-P: 1:100-1:1000. Optimal dilutions/concentrations should be determined by the researcher. Not tested in other applications.

Comment: Positive Control: 293T

Restrictions: For Research Use only

Handling

Format: Liquid

Concentration: 1 mg/mL

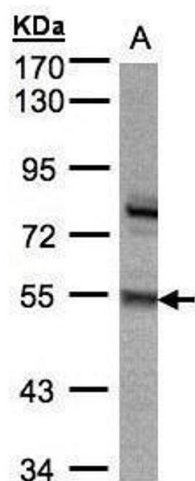
Buffer: 0.1M Tris-Glycine (pH 7), 10 % Glycerol, 0.01 % Thimerosal

Preservative: Thimerosal (Merthiolate)

Precaution of Use: This product contains Thimerosal (Merthiolate): a POISONOUS AND HAZARDOUS SUBSTANCE which should be handled by trained staff only.

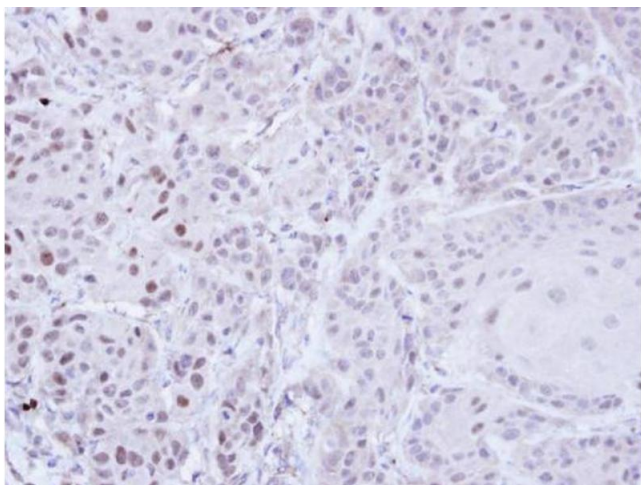
Storage: 4 °C,-20 °C

Storage Comment: Store as concentrated solution. Centrifuge briefly prior to opening vial. For short-term storage (1-2 weeks), store at 4°C. For long-term storage, aliquot and store at -20°C or below. Avoid multiple freeze-thaw cycles.



Western Blotting

Image 1. WB Image Sample(30 ug whole cell lysate) A:293T
7.5% SDS PAGE antibody diluted at 1:5000



Immunohistochemistry

Image 2. IHC-P Image Immunohistochemical analysis of paraffin-embedded Cal27 Xenograft, using ZNF165, antibody at 1:100 dilution.