

Datasheet for ABIN2855769

anti-HMG20B antibody**3** Images[Go to Product page](#)

Overview

Quantity:	100 µL
Target:	HMG20B
Reactivity:	Human
Host:	Rabbit
Clonality:	Polyclonal
Conjugate:	This HMG20B antibody is un-conjugated
Application:	Western Blotting (WB), Immunofluorescence (IF), Immunoprecipitation (IP), Immunocytochemistry (ICC)

Product Details

Immunogen:	Recombinant protein encompassing a sequence within the center region of human BRAF35. The exact sequence is proprietary.
Isotype:	IgG
Cross-Reactivity:	Human
Characteristics:	Rabbit Polyclonal antibody to BRAF35 (high-mobility group 20B) BRAF35 antibody
Purification:	Purified by antigen-affinity chromatography.

Target Details

Target:	HMG20B
Alternative Name:	high mobility group 20B (HMG20B Products)

Target Details

Background:	Required for correct progression through G2 phase of the cell cycle and entry into mitosis. Required for RCOR1/CoREST mediated repression of neuronal specific gene promoters. Cellular Localization: Nucleus
-------------	---

Molecular Weight:	36 kDa
-------------------	--------

Gene ID:	10362
----------	-------

UniProt:	Q9P0W2
----------	------------------------

Application Details

Application Notes:	WB: 1:500-1:3000. ICC/IF: 1:100-1:1000. IP: 1:100-1:500. Optimal dilutions/concentrations should be determined by the researcher. Not tested in other applications.
--------------------	---

Comment:	Positive Control: 293T
----------	------------------------

Restrictions:	For Research Use only
---------------	-----------------------

Handling

Format:	Liquid
---------	--------

Concentration:	0.95 mg/mL
----------------	------------

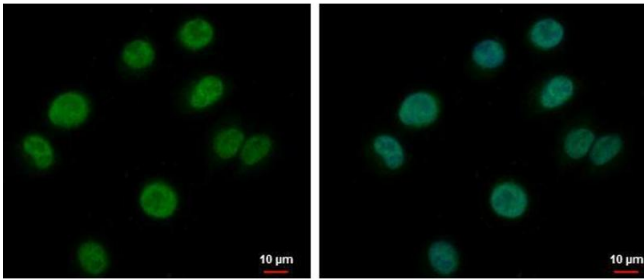
Buffer:	0.1M Tris-Glycine (pH 7), 10 % Glycerol, 0.01 % Thimerosal
---------	---

Preservative:	Thimerosal (Merthiolate)
---------------	--------------------------

Precaution of Use:	This product contains Thimerosal (Merthiolate): a POISONOUS AND HAZARDOUS SUBSTANCE which should be handled by trained staff only.
--------------------	--

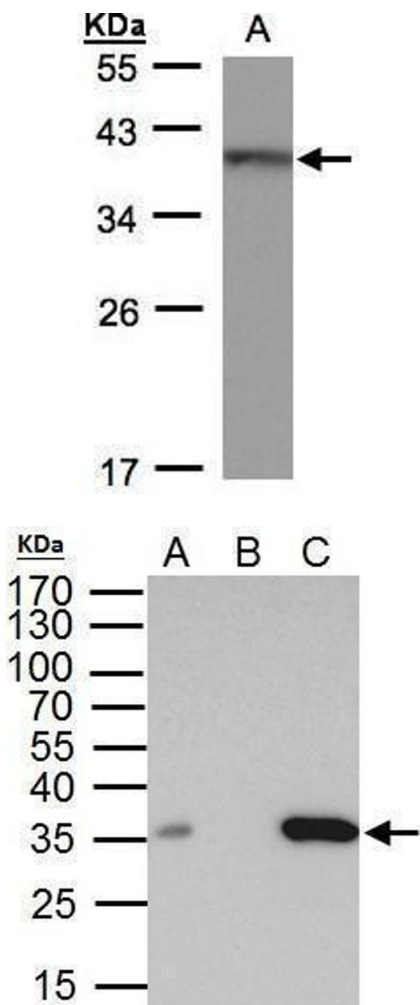
Storage:	4 °C, -20 °C
----------	--------------

Storage Comment:	Store as concentrated solution. Centrifuge briefly prior to opening vial. For short-term storage (1-2 weeks), store at 4°C. For long-term storage, aliquot and store at -20°C or below. Avoid multiple freeze-thaw cycles.
------------------	--



Immunofluorescence

Image 1. ICC/IF Image BRAF35 antibody detects BRAF35 protein at nucleus by immunofluorescent analysis. Sample: A375 cells were fixed in 4% paraformaldehyde at RT for 15 min. Green: BRAF35 protein stained by BRAF35 antibody , diluted at 1:500. Blue: Hoechst 33342 staining.



Western Blotting

Image 2. WB Image Sample(30 ug whole cell lysate) A: 293T 12% SDS PAGE antibody diluted at 1:500

Immunoprecipitation

Image 3. IP Image BRAF35 antibody immunoprecipitates BRAF35 protein in IP experiments. IP Sample: 293T whole cell lysate/extract A. 40 µg 293T whole cell lysate/extract B. Control with 2 µg of preimmune rabbit IgG C. Immunoprecipitation of BRAF35 protein by 2 µg of BRAF35 antibody , 10% SDS-PAGE The immunoprecipitated BRAF35 protein was detected by BRAF35 antibody , diluted at 1:1000. EasyBlot anti-rabbit IgG was used as a secondary reagent.