

Datasheet for ABIN2855771

**anti-SLC3A2 antibody****2** Images[Go to Product page](#)

## Overview

Quantity:	100 µL
Target:	SLC3A2
Reactivity:	Human
Host:	Rabbit
Clonality:	Polyclonal
Conjugate:	This SLC3A2 antibody is un-conjugated
Application:	Western Blotting (WB), Immunohistochemistry (Paraffin-embedded Sections) (IHC (p))

## Product Details

Immunogen:	Recombinant protein encompassing a sequence within the center region of human CD98. The exact sequence is proprietary.
Isotype:	IgG
Cross-Reactivity:	Human
Characteristics:	Rabbit Polyclonal antibody to CD98 (solute carrier family 3 (activators of dibasic and neutral amino acid transport), member 2) CD98 antibody [N1C2]
Purification:	Purified by antigen-affinity chromatography.

## Target Details

Target:	SLC3A2
Alternative Name:	solute carrier family 3 member 2 ( <a href="#">SLC3A2 Products</a> )

## Target Details

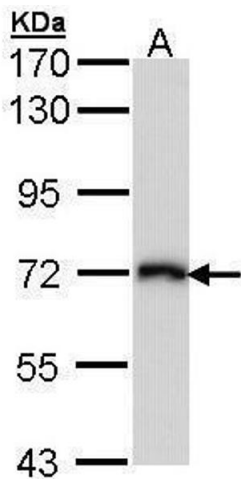
Background:	<p>This gene is a member of the solute carrier family and encodes a cell surface, transmembrane protein with an alpha amylase domain. The protein exists as the heavy chain of a heterodimer, covalently bound through di-sulfide bonds to one of several possible light chains. It associates with integrins and mediates integrin-dependent signaling related to normal cell growth and tumorigenesis. Alternate transcriptional splice variants, encoding different isoforms, have been characterized.</p> <p>Cellular Localization: Apical cell membrane , Melanosome</p>
Molecular Weight:	68 kDa
Gene ID:	6520
UniProt:	<a href="#">P08195</a>

## Application Details

Application Notes:	WB: 1:500-1:3000. IHC-P: 1:100-1:1000. Optimal dilutions/concentrations should be determined by the researcher. Not tested in other applications.
Comment:	Validation: Orthogonal
Restrictions:	For Research Use only

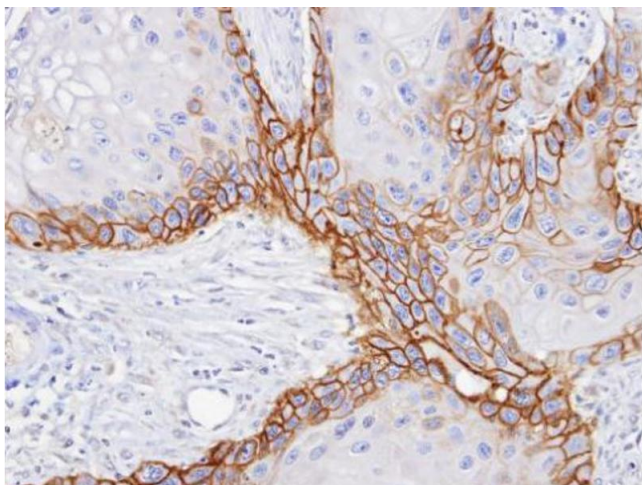
## Handling

Format:	Liquid
Concentration:	0.19 mg/mL
Buffer:	1XPBS ( pH 7), 1 % BSA, 20 % Glycerol, 0.025 % ProClin 300
Preservative:	ProClin
Precaution of Use:	This product contains ProClin: a POISONOUS AND HAZARDOUS SUBSTANCE which should be handled by trained staff only.
Storage:	4 °C,-20 °C
Storage Comment:	Store as concentrated solution. Centrifuge briefly prior to opening vial. For short-term storage (1-2 weeks), store at 4°C. For long-term storage, aliquot and store at -20°C or below. Avoid multiple freeze-thaw cycles.



### Western Blotting

**Image 1.** WB Image Sample (30 ug of whole cell lysate) A: Molt-4 , 7.5% SDS PAGE antibody diluted at 1:1000



### Immunohistochemistry

**Image 2.** IHC-P Image Immunohistochemical analysis of paraffin-embedded SCC15 xenograft, using CD98, antibody at 1:100 dilution.