



Datasheet for ABIN2855772
anti-CHI3L2 antibody



[Go to Product page](#)

2 Images

Overview

Quantity:	100 µL
Target:	CHI3L2
Reactivity:	Human
Host:	Rabbit
Clonality:	Polyclonal
Conjugate:	This CHI3L2 antibody is un-conjugated
Application:	Western Blotting (WB), Immunohistochemistry (Paraffin-embedded Sections) (IHC (p))

Product Details

Immunogen:	Recombinant protein encompassing a sequence within the center region of human YKL-39. The exact sequence is proprietary.
Isotype:	IgG
Cross-Reactivity:	Human
Characteristics:	Rabbit Polyclonal antibody to YKL-39 (chitinase 3-like 2) YKL-39 antibody [N1C3]
Purification:	Purified by antigen-affinity chromatography.

Target Details

Target:	CHI3L2
Alternative Name:	chitinase 3 like 2 (CHI3L2 Products)

Target Details

Background: May bind glycan structure with high affinity, but not heparin. Has no chitotriosidase activity.

Molecular Weight: 44 kDa

Gene ID: 1117

UniProt: [Q15782](#)

Application Details

Application Notes: WB: 1:1000-1:10000. IHC-P: 1:100-1:1000. Optimal dilutions/concentrations should be determined by the researcher. Not tested in other applications.

Comment: Positive Control: human CHI3L2-transfected 293T cells

Restrictions: For Research Use only

Handling

Format: Liquid

Concentration: 0.27 mg/mL

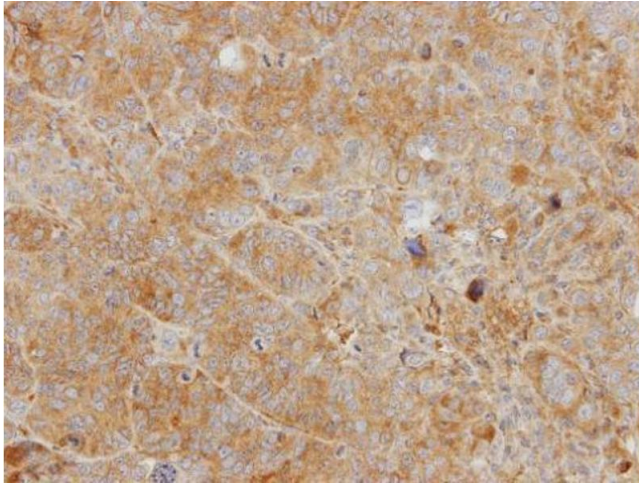
Buffer: 1XPBS, 1 % BSA, 20 % Glycerol (pH 7), 0.01 % Thimerosal

Preservative: Thimerosal (Merthiolate)

Precaution of Use: This product contains Thimerosal (Merthiolate): a POISONOUS AND HAZARDOUS SUBSTANCE which should be handled by trained staff only.

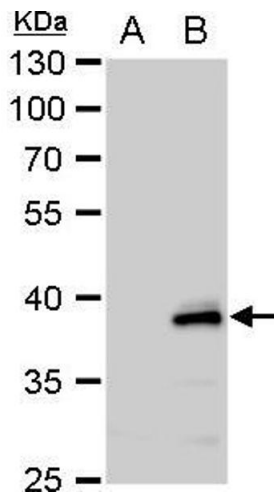
Storage: 4 °C,-20 °C

Storage Comment: Store as concentrated solution. Centrifuge briefly prior to opening vial. For short-term storage (1-2 weeks), store at 4°C. For long-term storage, aliquot and store at -20°C or below. Avoid multiple freeze-thaw cycles.



Immunohistochemistry

Image 1. IHC-P Image Immunohistochemical analysis of paraffin-embedded SW480 xenograft, using CHI3L2, antibody at 1:500 dilution.



Western Blotting

Image 2. WB Image YKL-39 antibody [N1C3] detects YKL-39 protein by western blot analysis. A. 30 μ g 293T whole cell extract B. 30 μ g whole extract of human CHI3L2-transfected 293T cells 10 % SDS-PAGE YKL-39 antibody [N1C3] , dilution: 1:5000