

Datasheet for ABIN2855773
anti-CPT2 antibody



[Go to Product page](#)

1 Image

Overview

Quantity:	100 µL
Target:	CPT2
Reactivity:	Human
Host:	Rabbit
Clonality:	Polyclonal
Conjugate:	This CPT2 antibody is un-conjugated
Application:	Western Blotting (WB)

Product Details

Immunogen:	Recombinant protein encompassing a sequence within the center region of human CPT2. The exact sequence is proprietary.
Isotype:	IgG
Cross-Reactivity:	Human
Characteristics:	Rabbit polyclonal antibody to CPT2 (carnitine palmitoyltransferase II) CPT2 antibody [N1C1]
Purification:	Purified by antigen-affinity chromatography.

Target Details

Target:	CPT2
Alternative Name:	carnitine palmitoyltransferase 2 (CPT2 Products)

Target Details

Background: The protein encoded by this gene is a nuclear protein which is transported to the mitochondrial inner membrane. Together with carnitine palmitoyltransferase I, the encoded protein oxidizes long-chain fatty acids in the mitochondria. Defects in this gene are associated with mitochondrial long-chain fatty-acid (LCFA) oxidation disorders.

Cellular Localization: Mitochondrion inner membrane

Molecular Weight: 74 kDa

Gene ID: 1376

UniProt: [P23786](#)

Pathways: [Regulation of Lipid Metabolism by PPARalpha](#), [Monocarboxylic Acid Catabolic Process](#)

Application Details

Application Notes: WB: 1:500-1:3000. Optimal dilutions/concentrations should be determined by the researcher.
Not tested in other applications.

Comment: Positive Control: HeLaS3

Restrictions: For Research Use only

Handling

Format: Liquid

Concentration: 1 mg/mL

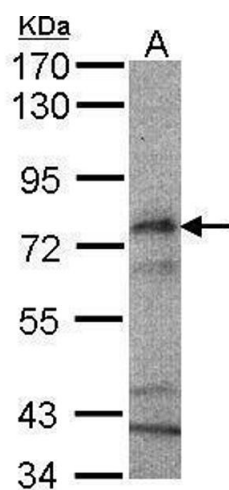
Buffer: 0.1M Tris-Glycine (pH 7), 10 % Glycerol, 0.01 % Thimerosal

Preservative: Thimerosal (Merthiolate)

Precaution of Use: This product contains Thimerosal (Merthiolate): a POISONOUS AND HAZARDOUS SUBSTANCE which should be handled by trained staff only.

Storage: 4 °C,-20 °C

Storage Comment: Store as concentrated solution. Centrifuge briefly prior to opening vial. For short-term storage (1-2 weeks), store at 4°C. For long-term storage, aliquot and store at -20°C or below. Avoid multiple freeze-thaw cycles.



Western Blotting

Image 1. WB Image Sample(30 μ g of whole cell lysate)
A:HeLa S3, 7.5% SDS PAGE antibody diluted at 1:1000