



[Go to Product page](#)

Datasheet for ABIN2855774
anti-CD131 antibody (Center)

1 Image

Overview

Quantity:	100 µL
Target:	CD131 (CSF2RB)
Binding Specificity:	Center
Reactivity:	Human
Host:	Rabbit
Clonality:	Polyclonal
Conjugate:	This CD131 antibody is un-conjugated
Application:	Western Blotting (WB), Flow Cytometry (FACS)

Product Details

Immunogen:	Recombinant protein encompassing a sequence within the center region of human IL3RB. The exact sequence is proprietary.
Isotype:	IgG
Characteristics:	Rabbit Polyclonal antibody to IL3RB (colony stimulating factor 2 receptor, beta, low-affinity (granulocyte-macrophage)) IL3RB antibody [N1N3]
Purification:	Purified by antigen-affinity chromatography.

Target Details

Target:	CD131 (CSF2RB)
Alternative Name:	IL3RB (CSF2RB Products)

Target Details

Background: The protein encoded by this gene is the common beta chain of the high affinity receptor for IL-3, IL-5 and CSF. Defects in this gene have been reported to be associated with protein alveolar proteinosis (PAP).

Cellular Localization: Membrane, Single-pass type I membrane protein

Molecular Weight: 97 kDa

Gene ID: 1439

Pathways: [JAK-STAT Signaling](#)

Application Details

Application Notes: Suggested dilution Reference Flow cytometry/FACS Assay-dependent dilution Western blot 1:500-1:3000* Not tested in other applications. *Optimal dilutions/concentrations should be determined by the researcher.Suggested dilutionReferenceFlow cytometry/FACS Assay-dependent dilution Western blot1:500-1:3000*

Comment: Positive Control: K562

Restrictions: For Research Use only

Handling

Format: Liquid

Concentration: 1 mg/mL

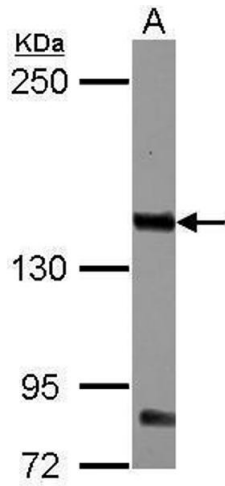
Buffer: 0.1M Tris, 0.1M Glycine, 10 % Glycerol (pH 7). 0.01 % Thimerosal was added as a preservative.

Preservative: Thimerosal (Merthiolate)

Precaution of Use: This product contains Thimerosal (Merthiolate): a POISONOUS AND HAZARDOUS SUBSTANCE which should be handled by trained staff only.

Storage: -20 °C

Storage Comment: Keep as concentrated solution. Aliquot and store at -20°C or below. Avoid multiple freeze-thaw cycles.



Western Blotting

Image 1. WB Image Sample (30 ug of whole cell lysate) A:
K562 5% SDS PAGE antibody diluted at 1:1000