

Datasheet for ABIN2855777

anti-ME1 antibody

6 Images

[Go to Product page](#)

Overview

Quantity:	100 µL
Target:	ME1
Reactivity:	Human
Host:	Rabbit
Clonality:	Polyclonal
Conjugate:	This ME1 antibody is un-conjugated
Application:	Western Blotting (WB), Immunofluorescence (IF), Immunohistochemistry (Paraffin-embedded Sections) (IHC (p)), Immunocytochemistry (ICC), Immunoprecipitation (IP)

Product Details

Immunogen:	Recombinant protein encompassing a sequence within the center region of human ME1. The exact sequence is proprietary.
Isotype:	IgG
Cross-Reactivity:	Human, Mouse, Rat
Characteristics:	Rabbit Polyclonal antibody to ME1 (malic enzyme 1, NADP(+)-dependent, cytosolic) ME1 antibody
Purification:	Purified by antigen-affinity chromatography.
Grade:	KO Validated

Target Details

Target:	ME1
---------	-----

Target Details

Alternative Name:	malic enzyme 1 (ME1 Products)
Background:	<p>This gene encodes a cytosolic, NADP-dependent enzyme that generates NADPH for fatty acid biosynthesis. The activity of this enzyme, the reversible oxidative decarboxylation of malate, links the glycolytic and citric acid cycles. The regulation of expression for this gene is complex. Increased expression can result from elevated levels of thyroid hormones or by higher proportions of carbohydrates in the diet.</p> <p>Cellular Localization: Cytoplasm</p>
Molecular Weight:	64 kDa
Gene ID:	4199
UniProt:	P48163
Pathways:	Regulation of Lipid Metabolism by PPARalpha

Application Details

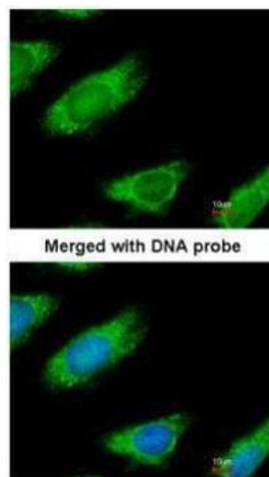
Application Notes:	WB: 1:500-1:10000. ICC/IF: 1:100-1:1000. IHC-P: 1:100-1:1000. IP: 1:100-1:500. Optimal dilutions/concentrations should be determined by the researcher. Not tested in other applications.
Comment:	<p>Positive Control: PC-12 , NIH-3T3 , JC , BCL-1</p> <p>Validation: KO/KD</p>
Restrictions:	For Research Use only

Handling

Format:	Liquid
Concentration:	0.94 mg/mL
Buffer:	1XPBS (pH 7), 20 % Glycerol, 0.025 % ProClin 300
Preservative:	ProClin
Precaution of Use:	This product contains ProClin: a POISONOUS AND HAZARDOUS SUBSTANCE which should be handled by trained staff only.
Storage:	4 °C,-20 °C
Storage Comment:	Store as concentrated solution. Centrifuge briefly prior to opening vial. For short-term storage

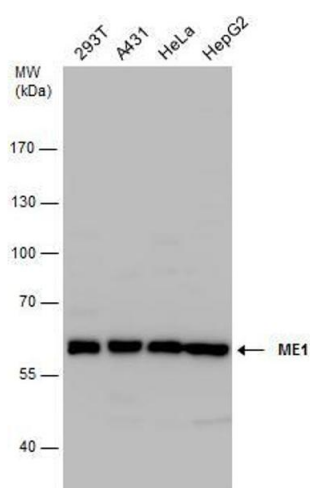
(1-2 weeks), store at 4°C. For long-term storage, aliquot and store at -20°C or below. Avoid multiple freeze-thaw cycles.

Images



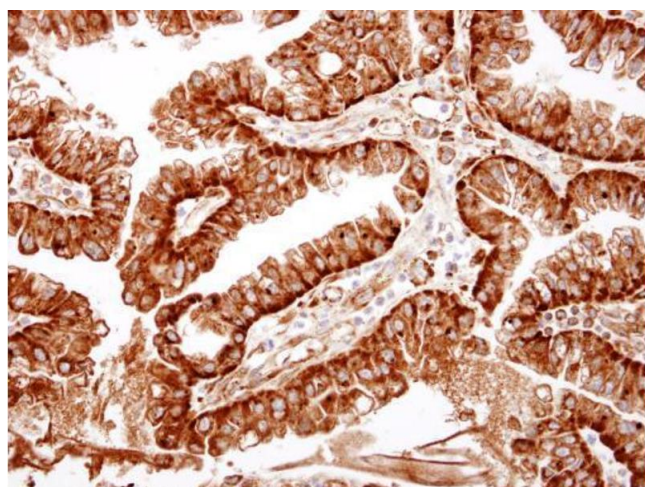
Immunofluorescence

Image 1. ICC/IF Image Immunofluorescence analysis of paraformaldehyde-fixed HeLa, using ME1, antibody at 1:200 dilution.



Western Blotting

Image 2. WB Image ME1 antibody detects ME1 protein by western blot analysis. Various whole cell extracts (30 µg) were separated by 7.5% SDS-PAGE, and the membrane was blotted with ME1 antibody, diluted at a dilution of 1:1000.



Immunohistochemistry

Image 3. IHC-P Image ME1 antibody detects ME1 protein at cytosol on human ovarian carcinoma by immunohistochemical analysis. Sample: Paraffin-embedded human ovarian carcinoma. ME1 antibody, dilution: 1:500.

Please check the [product details page](#) for more images. Overall 6 images are available for ABIN2855777.