

Datasheet for ABIN2855778

anti-KRT14 antibody

6 Images

1 Publication

[Go to Product page](#)

Overview

Quantity:	100 µL
Target:	KRT14
Reactivity:	Human
Host:	Rabbit
Clonality:	Polyclonal
Conjugate:	This KRT14 antibody is un-conjugated
Application:	Western Blotting (WB), Immunohistochemistry (IHC), Immunofluorescence (IF), Immunohistochemistry (Paraffin-embedded Sections) (IHC (p)), Immunohistochemistry (Frozen Sections) (IHC (fro)), Immunocytochemistry (ICC)

Product Details

Immunogen:	Recombinant protein encompassing a sequence within the center region of human Cytokeratin 14. The exact sequence is proprietary.
Isotype:	IgG
Cross-Reactivity:	Dog, Human, Rat
Characteristics:	Rabbit Polyclonal antibody to Cytokeratin 14 (keratin 14) Cytokeratin 14 antibody
Purification:	Purified by antigen-affinity chromatography.

Target Details

Target:	KRT14
---------	-------

Target Details

Alternative Name:	keratin 14 (KRT14 Products)
Background:	<p>This gene encodes a member of the keratin family, the most diverse group of intermediate filaments. This gene product, a type I keratin, is usually found as a heterotetramer with two keratin 5 Molecules, a type II keratin. Together they form the cytoskeleton of epithelial cells. Mutations in the genes for these keratins are associated with epidermolysis bullosa simplex. At least one pseudogene has been identified at 17p12-p11.</p> <p>Cellular Localization: Cytoplasm , Nucleus</p>
Molecular Weight:	52 kDa
Gene ID:	3861
UniProt:	P02533

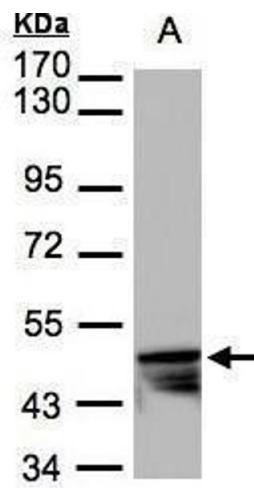
Application Details

Application Notes:	WB: 1:1000-1:10000. ICC/IF: 1:100-1:1000. IHC-P: 1:100-1:1000. Optimal dilutions/concentrations should be determined by the researcher. Not tested in other applications.
Comment:	Positive Control: HeLa
Restrictions:	For Research Use only

Handling

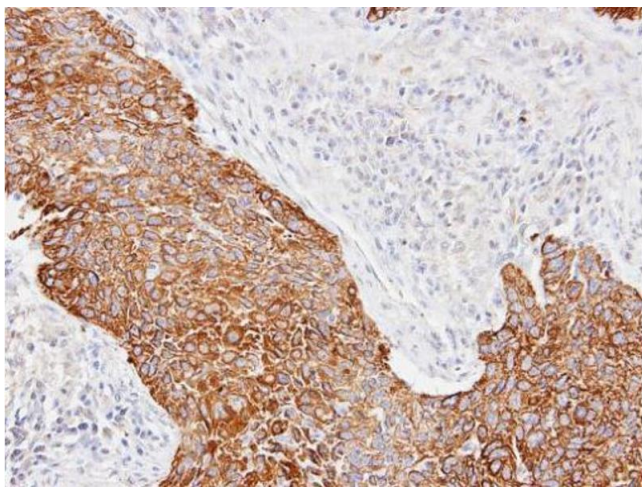
Format:	Liquid
Concentration:	0.48 mg/mL
Buffer:	1XPBS (pH 7), 1 % BSA, 20 % Glycerol, 0.025 % ProClin 300
Preservative:	ProClin
Precaution of Use:	This product contains ProClin: a POISONOUS AND HAZARDOUS SUBSTANCE which should be handled by trained staff only.
Storage:	4 °C,-20 °C
Storage Comment:	Store as concentrated solution. Centrifuge briefly prior to opening vial. For short-term storage (1-2 weeks), store at 4°C. For long-term storage, aliquot and store at -20°C or below. Avoid multiple freeze-thaw cycles.

Product cited in: Yang, Chien, Lai, Su, Jan, Hsiao, Chen: "Monoamine Oxidase B Expression Correlates with a Poor Prognosis in Colorectal Cancer Patients and Is Significantly Associated with Epithelial-to-Mesenchymal Transition-Related Gene Signatures." in: **International journal of molecular sciences**, Vol. 21, Issue 8, (2020) ([PubMed](#)).



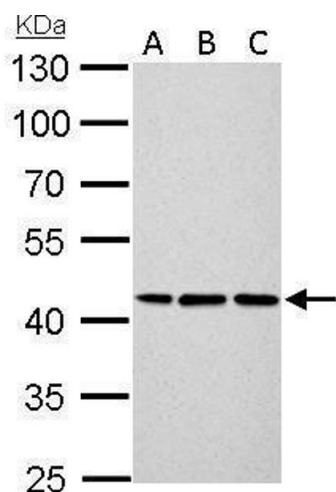
Western Blotting

Image 1. WB Image Sample(30 µg of whole cell lysate)
A:HeLa S3, 7.5% SDS PAGE antibody diluted at 1:3000



Immunohistochemistry

Image 2. IHC-P Image Immunohistochemical analysis of paraffin-embedded Lung CA, using Cytokeratin 14, antibody at 1:100 dilution.



Western Blotting

Image 3. WB Image Cytokeratin 14 antibody detects KRT14 protein by Western blot analysis. A. 30 µg Neuro2A whole cell lysate/extract B. 30 µg GL261 whole cell lysate/extract C. 30 µg C8D30 whole cell lysate/extract 10 % SDS-PAGE Cytokeratin 14 antibody , dilution: 1:500

Please check the [product details page](#) for more images. Overall 6 images are available for ABIN2855778.