



[Go to Product page](#)

Datasheet for ABIN2855782
anti-PCOLCE antibody

2 Images

Overview

Quantity:	100 µL
Target:	PCOLCE
Reactivity:	Human
Host:	Rabbit
Clonality:	Polyclonal
Conjugate:	This PCOLCE antibody is un-conjugated
Application:	Western Blotting (WB), Immunohistochemistry (Paraffin-embedded Sections) (IHC (p))

Product Details

Immunogen:	Recombinant protein encompassing a sequence within the center region of human PCOLCE. The exact sequence is proprietary.
Isotype:	IgG
Cross-Reactivity:	Human
Characteristics:	Rabbit Polyclonal antibody to PCPE-1 (procollagen C-endopeptidase enhancer) PCPE-1 antibody [N1C3]
Purification:	Purified by antigen-affinity chromatography.

Target Details

Target:	PCOLCE
Alternative Name:	procollagen C-endopeptidase enhancer (PCOLCE Products)

Target Details

Background: Fibrillar collagen types I-III are synthesized as precursor molecules known as procollagens. These precursors contain amino- and carboxyl-terminal peptide extensions known as N- and C-propeptides, respectively, which are cleaved, upon secretion of procollagen from the cell, to yield the mature triple helical, highly structured fibrils. This gene encodes a glycoprotein which binds and drives the enzymatic cleavage of type I procollagen and heightens C-proteinase activity.

Cellular Localization: Secreted

Molecular Weight: 48 kDa

Gene ID: 5118

UniProt: [Q15113](#)

Application Details

Application Notes: WB: 1:500-1:3000. IHC-P: 1:100-1:1000. Optimal dilutions/concentrations should be determined by the researcher. Not tested in other applications.

Restrictions: For Research Use only

Handling

Format: Liquid

Concentration: 0.69 mg/mL

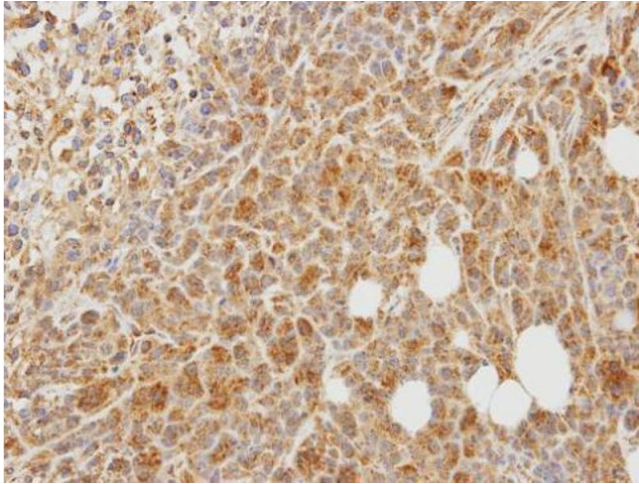
Buffer: 1XPBS (pH 7), 20 % Glycerol, 0.025 % ProClin 300

Preservative: ProClin

Precaution of Use: This product contains ProClin: a POISONOUS AND HAZARDOUS SUBSTANCE which should be handled by trained staff only.

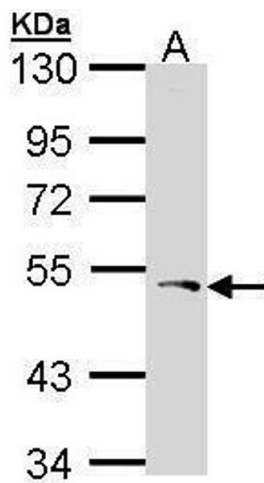
Storage: 4 °C, -20 °C

Storage Comment: Store as concentrated solution. Centrifuge briefly prior to opening vial. For short-term storage (1-2 weeks), store at 4°C. For long-term storage, aliquot and store at -20°C or below. Avoid multiple freeze-thaw cycles.



Immunohistochemistry

Image 1. IHC-P Image Immunohistochemical analysis of paraffin-embedded SAS xenograft, using PCPE-1, antibody at 1:100 dilution.



Western Blotting

Image 2. WB Image Sample (30 ug of whole cell lysate) A: Hela 10% SDS PAGE antibody diluted at 1:1000