

Datasheet for ABIN2855783

anti-SOX13 antibody**3** Images[Go to Product page](#)

Overview

| | |
|--------------|---|
| Quantity: | 100 µL |
| Target: | SOX13 |
| Reactivity: | Human |
| Host: | Rabbit |
| Clonality: | Polyclonal |
| Conjugate: | This SOX13 antibody is un-conjugated |
| Application: | Western Blotting (WB), Immunofluorescence (IF), Immunoprecipitation (IP), Immunocytochemistry (ICC) |

Product Details

| | |
|-------------------|---|
| Immunogen: | Recombinant protein encompassing a sequence within the center region of human SOX13. The exact sequence is proprietary. |
| Isotype: | IgG |
| Cross-Reactivity: | Human |
| Characteristics: | Rabbit polyclonal antibody to SOX13 (SRY (sex determining region Y)-box 13) SOX13 antibody [N1C3] |
| Purification: | Purified by antigen-affinity chromatography. |

Target Details

| | |
|-------------------|---|
| Target: | SOX13 |
| Alternative Name: | SRY-box 13 (SOX13 Products) |

Target Details

Background: This gene encodes a member of the SOX (SRY-related HMG-box) family of transcription factors involved in the regulation of embryonic development and in the determination of cell fate. The encoded protein may act as a transcriptional regulator after forming a protein complex with other proteins. It has also been determined to be a type-1 diabetes autoantigen, also known as islet cell antibody 12.

Cellular Localization: Nucleus

Molecular Weight: 69 kDa

Gene ID: 9580

UniProt: [Q9UN79](#)

Application Details

Application Notes: WB: 1:500-1:3000. ICC/IF: 1:100-1:1000. IP: 1:100-1:500. Optimal dilutions/concentrations should be determined by the researcher. Not tested in other applications.

Comment: Positive Control: Molt-4

Restrictions: For Research Use only

Handling

Format: Liquid

Concentration: 1 mg/mL

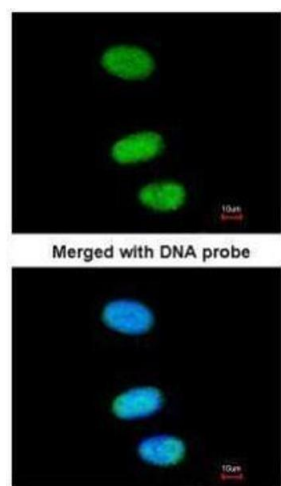
Buffer: 0.1M Tris-Glycine (pH 7), 10 % Glycerol, 0.01 % Thimerosal

Preservative: Thimerosal (Merthiolate)

Precaution of Use: This product contains Thimerosal (Merthiolate): a POISONOUS AND HAZARDOUS SUBSTANCE which should be handled by trained staff only.

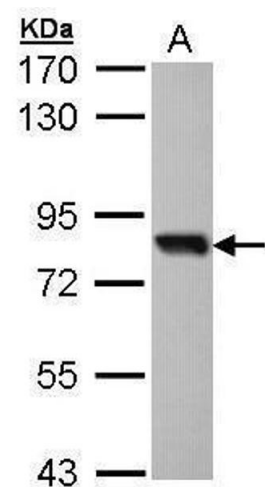
Storage: 4 °C, -20 °C

Storage Comment: Store as concentrated solution. Centrifuge briefly prior to opening vial. For short-term storage (1-2 weeks), store at 4°C. For long-term storage, aliquot and store at -20°C or below. Avoid multiple freeze-thaw cycles.



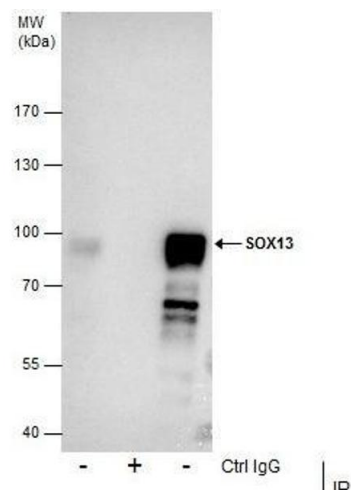
Immunofluorescence

Image 1. ICC/IF Image Immunofluorescence analysis of paraformaldehyde-fixed HeLa, using SOX13, antibody at 1:200 dilution.



Western Blotting

Image 2. WB Image Sample (30 ug of whole cell lysate) A: Molt-4 , 7.5% SDS PAGE antibody diluted at 1:1000



Immunoprecipitation

Image 3. IP Image Immunoprecipitation of SOX13 protein from NT2D1 whole cell extracts using 5 µg of SOX13 antibody [N1C3], Western blot analysis was performed using SOX13 antibody [N1C3], EasyBlot anti-Rabbit IgG was used as a secondary reagent.