

Datasheet for ABIN2855784

**anti-STOML1 antibody**[Go to Product page](#)**2** Images

## Overview

Quantity:	100 µL
Target:	STOML1
Reactivity:	Human
Host:	Rabbit
Clonality:	Polyclonal
Conjugate:	This STOML1 antibody is un-conjugated
Application:	Western Blotting (WB), Immunohistochemistry (Paraffin-embedded Sections) (IHC (p))

## Product Details

Immunogen:	Recombinant protein encompassing a sequence within the center region of human STOML1. The exact sequence is proprietary.
Isotype:	IgG
Cross-Reactivity:	Human
Characteristics:	Rabbit polyclonal antibody to STOML1 (stomatin (EPB72)-like 1) STOML1 antibody [N2C3]
Purification:	Purified by antigen-affinity chromatography.

## Target Details

Target:	STOML1
Alternative Name:	stomatin like 1 ( <a href="#">STOML1 Products</a> )

## Target Details

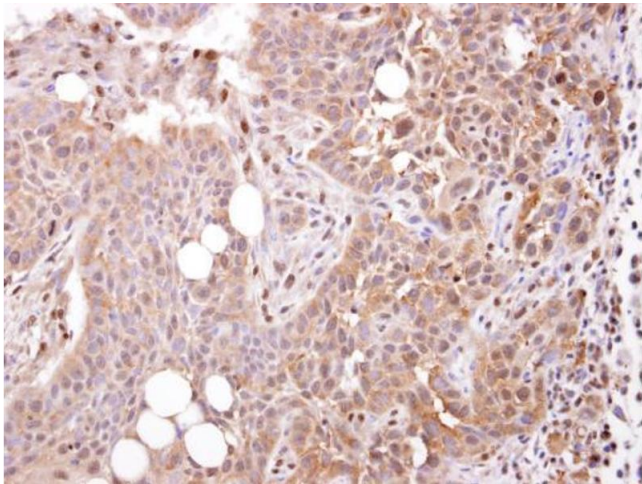
Background:	Cellular Localization: Membrane, Single-pass type III membrane protein
Molecular Weight:	43 kDa
Gene ID:	9399
UniProt:	<a href="#">Q9UBI4</a>

## Application Details

Application Notes:	WB: 1:500-1:3000. IHC-P: 1:100-1:1000. Optimal dilutions/concentrations should be determined by the researcher. Not tested in other applications.
Comment:	Positive Control: Molt-4
Restrictions:	For Research Use only

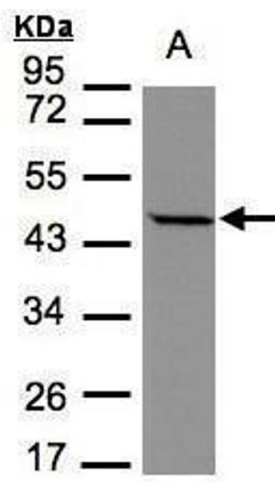
## Handling

Format:	Liquid
Concentration:	1 mg/mL
Buffer:	0.1M Tris-Glycine ( pH 7), 10 % Glycerol, 0.01 % Thimerosal
Preservative:	Thimerosal (Merthiolate)
Precaution of Use:	This product contains Thimerosal (Merthiolate): a POISONOUS AND HAZARDOUS SUBSTANCE which should be handled by trained staff only.
Storage:	4 °C, -20 °C
Storage Comment:	Store as concentrated solution. Centrifuge briefly prior to opening vial. For short-term storage (1-2 weeks), store at 4°C. For long-term storage, aliquot and store at -20°C or below. Avoid multiple freeze-thaw cycles.



**Immunohistochemistry**

**Image 1.** IHC-P Image STOML1 antibody [N2C3] detects STOML1 protein at cytosol on HSC-3 xenograft by immunohistochemical analysis. Sample: Paraffin-embedded HSC-3 xenograft. STOML1 antibody [N2C3] , dilution: 1:250.



**Western Blotting**

**Image 2.** WB Image Sample(30 µg of whole cell lysate) A:MOLT4, 7.5% SDS PAGE antibody diluted at 1:1000