

Datasheet for ABIN2855785  
**anti-HMBOX1 antibody**

## 3 Images

[Go to Product page](#)

## Overview

Quantity:	100 µL
Target:	HMBOX1
Reactivity:	Human
Host:	Rabbit
Clonality:	Polyclonal
Conjugate:	This HMBOX1 antibody is un-conjugated
Application:	Western Blotting (WB), Immunocytochemistry (ICC), Immunofluorescence (IF), Immunohistochemistry (Paraffin-embedded Sections) (IHC (p)), Immunoprecipitation (IP)

## Product Details

Immunogen:	Recombinant protein encompassing a sequence within the center region of human HMBOX1. The exact sequence is proprietary.
Isotype:	IgG
Cross-Reactivity:	Human
Characteristics:	Rabbit polyclonal antibody to HMBOX1 (homeobox containing 1) HMBOX1 antibody [N3C3]
Purification:	Purified by antigen-affinity chromatography.

## Target Details

Target:	HMBOX1
Alternative Name:	homeobox containing 1 ( <a href="#">HMBOX1 Products</a> )

## Target Details

Background: Transcription factor. Isoform 1 acts as a transcriptional repressor. Isoform 4 has very low activity as a transcriptional repressor.

Cellular Localization: Nucleus

Molecular Weight: 47 kDa

Gene ID: 79618

UniProt: [Q6NT76](#)

## Application Details

Application Notes: WB: 1:500-1:3000. ICC/IF: 1:100-1:1000. IHC-P: 1:100-1:1000. Optimal dilutions/concentrations should be determined by the researcher. Not tested in other applications.

Comment: Positive Control: Raji

Restrictions: For Research Use only

## Handling

Format: Liquid

Concentration: 1 mg/mL

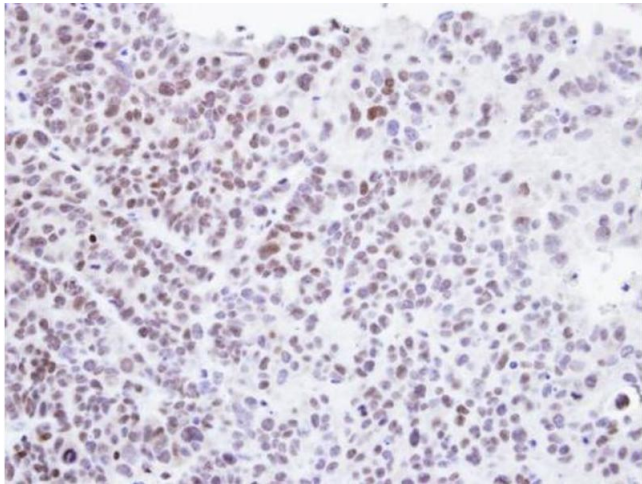
Buffer: 0.1M Tris-Glycine ( pH 7), 10 % Glycerol, 0.01 % Thimerosal

Preservative: Thimerosal (Merthiolate)

Precaution of Use: This product contains Thimerosal (Merthiolate): a POISONOUS AND HAZARDOUS SUBSTANCE which should be handled by trained staff only.

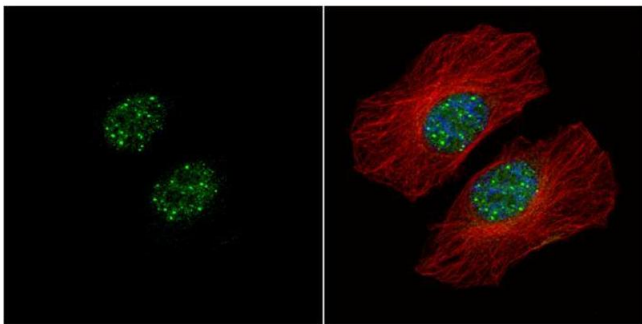
Storage: 4 °C, -20 °C

Storage Comment: Store as concentrated solution. Centrifuge briefly prior to opening vial. For short-term storage (1-2 weeks), store at 4°C. For long-term storage, aliquot and store at -20°C or below. Avoid multiple freeze-thaw cycles.



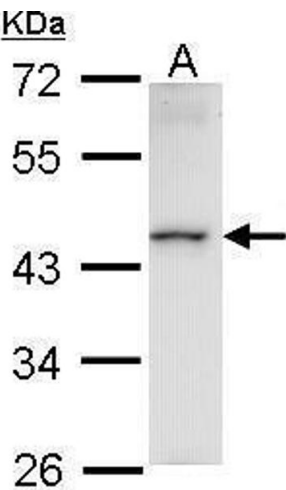
Immunohistochemistry

**Image 1.** IHC-P Image Immunohistochemical analysis of paraffin-embedded SW480 xenograft , using Homeobox-containing protein 1, antibody at 1:500 dilution.



Immunofluorescence

**Image 2.** ICC/IF Image HMBOX1 antibody [N3C3] detects HMBOX1 protein at nucleus by immunofluorescent analysis. Sample: HeLa cells were fixed in 4% paraformaldehyde at RT for 15 min. Green: HMBOX1 protein stained by HMBOX1 antibody [N3C3] , diluted at 1:500. Red: alpha Tubulin, a cytoskeleton marker, stained by alpha Tubulin antibody [B-5-1-2] , diluted at 1:10000. Blue: Hoechst 33342 staining.



Western Blotting

**Image 3.** WB Image Sample (30 ug of whole cell lysate) A: Raji 10% SDS PAGE antibody diluted at 1:1000