

Datasheet for ABIN2855786

anti-ITPKC antibody**2** Images[Go to Product page](#)

Overview

Quantity:	100 µL
Target:	ITPKC
Reactivity:	Human
Host:	Rabbit
Clonality:	Polyclonal
Conjugate:	This ITPKC antibody is un-conjugated
Application:	Western Blotting (WB), Immunofluorescence (IF), Immunocytochemistry (ICC)

Product Details

Immunogen:	Recombinant protein encompassing a sequence within the center region of human IP3KC. The exact sequence is proprietary.
Isotype:	IgG
Cross-Reactivity:	Human
Characteristics:	Rabbit Polyclonal antibody to IP3KC (inositol 1,4,5-trisphosphate 3-kinase C) IP3KC antibody [N3C2], Internal
Purification:	Purified by antigen-affinity chromatography.

Target Details

Target:	ITPKC
Alternative Name:	inositol-trisphosphate 3-kinase C (ITPKC Products)

Target Details

Background: Inositol 1,4,5-trisphosphate 3-kinase (ITPK) catalyzes the phosphorylation of Ins(1,4,5)P₃ to Ins(1,3,4,5)P₄, both of which are modulators of calcium homeostasis. ITPK isoforms include ITPKA (MIM 147521), ITPKB (MIM 147522), and ITPKC, all of which contain a conserved catalytic unit in their C termini, but have unique N-terminal sequences and tissue distributions.[supplied by OMIM]

Cellular Localization: Nucleus , Cytoplasm

Molecular Weight: 75 kDa

Gene ID: 80271

UniProt: [Q96DU7](#)

Application Details

Application Notes: WB: 1:500-1:3000. ICC/IF: 1:100-1:1000. Optimal dilutions/concentrations should be determined by the researcher. Not tested in other applications.

Comment: Positive Control: Raji

Restrictions: For Research Use only

Handling

Format: Liquid

Concentration: 0.84 mg/mL

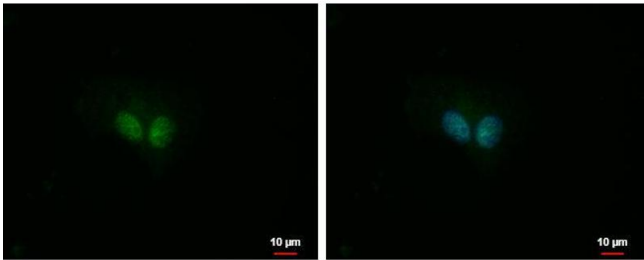
Buffer: 0.1M Tris-Glycine (pH 7), 20 % Glycerol, 0.01 % Thimerosal

Preservative: Thimerosal (Merthiolate)

Precaution of Use: This product contains Thimerosal (Merthiolate): a POISONOUS AND HAZARDOUS SUBSTANCE which should be handled by trained staff only.

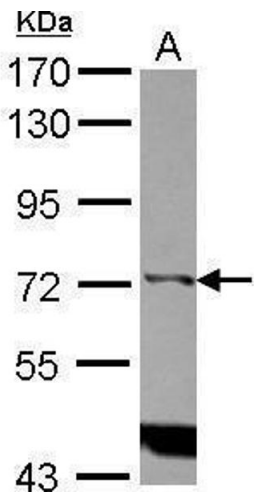
Storage: 4 °C, -20 °C

Storage Comment: Store as concentrated solution. Centrifuge briefly prior to opening vial. For short-term storage (1-2 weeks), store at 4°C. For long-term storage, aliquot and store at -20°C or below. Avoid multiple freeze-thaw cycles.



Immunofluorescence

Image 1. ICC/IF Image IP3KC antibody [N3C2], Internal detects IP3KC protein at nucleus by immunofluorescent analysis. Sample: RD cells were fixed in 4% paraformaldehyde at RT for 15 min. Green: IP3KC protein stained by IP3KC antibody [N3C2], Internal, diluted at 1:500. Blue: Hoechst 33342 staining. Scale bar = 10 μm.



Western Blotting

Image 2. WB Image Sample (30 ug of whole cell lysate) A: Raji 7.5% SDS PAGE antibody diluted at 1:1000