

Datasheet for ABIN2855789  
**anti-Kallikrein 11 antibody**[Go to Product page](#)

## 4 Images

## Overview

Quantity:	100 µL
Target:	Kallikrein 11 (KLK11)
Reactivity:	Human
Host:	Rabbit
Clonality:	Polyclonal
Conjugate:	This Kallikrein 11 antibody is un-conjugated
Application:	Western Blotting (WB), Immunohistochemistry (Paraffin-embedded Sections) (IHC (p))

## Product Details

Immunogen:	Recombinant protein encompassing a sequence within the center region of human Kallikrein 11. The exact sequence is proprietary.
Isotype:	IgG
Cross-Reactivity:	Human, Mouse
Characteristics:	Rabbit Polyclonal antibody to KLK11 (kallikrein-related peptidase 11) KLK11 antibody [N1C3]
Purification:	Purified by antigen-affinity chromatography.

## Target Details

Target:	Kallikrein 11 (KLK11)
Alternative Name:	kallikrein related peptidase 11 ( <a href="#">KLK11 Products</a> )

## Target Details

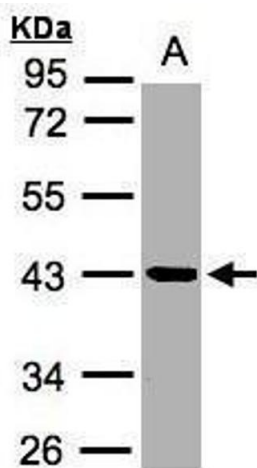
Background:	<p>Kallikreins are a subgroup of serine proteases having diverse physiological functions. Growing evidence suggests that many kallikreins are implicated in carcinogenesis and some have potential as novel cancer and other disease biomarkers. This gene is one of the fifteen kallikrein subfamily members located in a cluster on chromosome 19. Alternate splicing of this gene results in two transcript variants encoding two different isoforms which are differentially expressed.</p> <p>Cellular Localization: Secreted</p>
Molecular Weight:	31 kDa
Gene ID:	11012
UniProt:	<a href="#">Q9UBX7</a>
Pathways:	<a href="#">Complement System</a>

## Application Details

Application Notes:	WB: 1:500-1:3000. IHC-P: 1:100-1:1000. Optimal dilutions/concentrations should be determined by the researcher. Not tested in other applications.
Comment:	Positive Control: Mouse brain , Molt-4
Restrictions:	For Research Use only

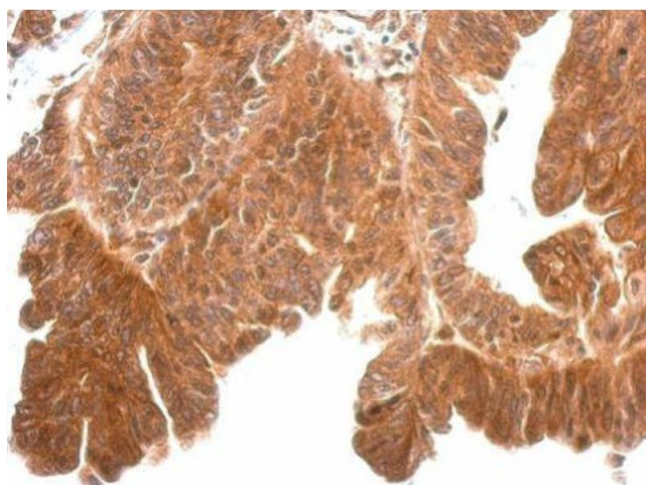
## Handling

Format:	Liquid
Concentration:	1 mg/mL
Buffer:	0.1M Tris-Glycine ( pH 7), 10 % Glycerol, 0.01 % Thimerosal
Preservative:	Thimerosal (Merthiolate)
Precaution of Use:	This product contains Thimerosal (Merthiolate): a POISONOUS AND HAZARDOUS SUBSTANCE which should be handled by trained staff only.
Storage:	4 °C,-20 °C
Storage Comment:	Store as concentrated solution. Centrifuge briefly prior to opening vial. For short-term storage (1-2 weeks), store at 4°C. For long-term storage, aliquot and store at -20°C or below. Avoid multiple freeze-thaw cycles.



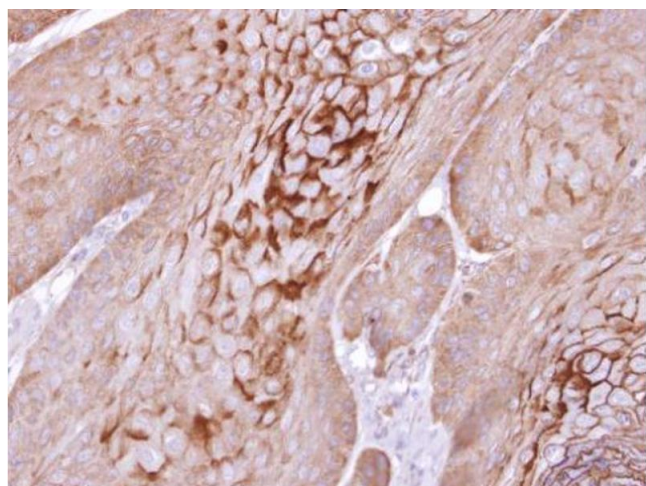
#### Western Blotting

**Image 1.** WB Image Sample (30µg whole cell lysate)  
A: MOLT4, 10% SDS PAGE antibody diluted at 1:2000



#### Immunohistochemistry

**Image 2.** IHC-P Image KLK11 antibody [N1C3] detects KLK11 protein at cytosol on human gastric cancer by immunohistochemical analysis. Sample: Paraffin-embedded gastric cancer. KLK11 antibody [N1C3], dilution: 1:500.



#### Immunohistochemistry

**Image 3.** IHC-P Image Immunohistochemical analysis of paraffin-embedded Cal27 xenograft, using KLK11, antibody at 1:100 dilution.

Please check the [product details page](#) for more images. Overall 4 images are available for ABIN2855789.