

Datasheet for ABIN2855790

anti-PACSIN2 antibody**2** Images[Go to Product page](#)

Overview

Quantity:	100 µL
Target:	PACSIN2
Reactivity:	Human
Host:	Rabbit
Clonality:	Polyclonal
Conjugate:	This PACSIN2 antibody is un-conjugated
Application:	Western Blotting (WB), Immunohistochemistry (Paraffin-embedded Sections) (IHC (p))

Product Details

Immunogen:	Recombinant protein encompassing a sequence within the center region of human PACSIN2. The exact sequence is proprietary.
Isotype:	IgG
Cross-Reactivity:	Human
Characteristics:	Rabbit Polyclonal antibody to PACSIN2 (protein kinase C and casein kinase substrate in neurons 2) PACSIN2 antibody [N2C3]
Purification:	Purified by antigen-affinity chromatography.

Target Details

Target:	PACSIN2
Alternative Name:	protein kinase C and casein kinase substrate in neurons 2 (PACSIN2 Products)

Target Details

Background: This gene is a member of the protein kinase C and casein kinase substrate in neurons family. The encoded protein is involved in linking the actin cytoskeleton with vesicle formation by regulating tubulin polymerization. Alternative splicing results in multiple transcript variants.

Cellular Localization: Cytoplasmic vesicle (By similarity)

Molecular Weight: 56 kDa

Gene ID: 11252

UniProt: [Q9UNF0](#)

Application Details

Application Notes: WB: 1:500-1:3000. IHC-P: 1:100-1:1000. Optimal dilutions/concentrations should be determined by the researcher. Not tested in other applications.

Comment: Positive Control: 293T , A431 , HeLa , HepG2

Restrictions: For Research Use only

Handling

Format: Liquid

Concentration: 1 mg/mL

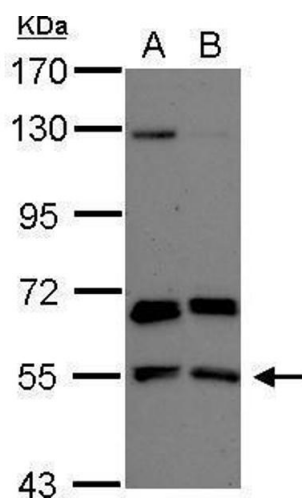
Buffer: 0.1M Tris-Glycine (pH 7), 10 % Glycerol, 0.01 % Thimerosal

Preservative: Thimerosal (Merthiolate)

Precaution of Use: This product contains Thimerosal (Merthiolate): a POISONOUS AND HAZARDOUS SUBSTANCE which should be handled by trained staff only.

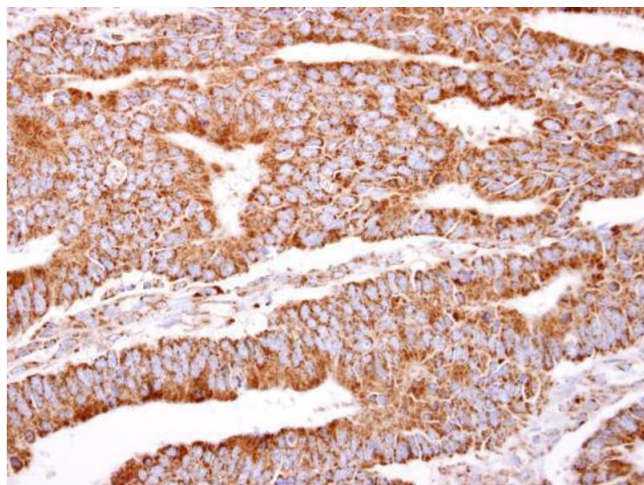
Storage: 4 °C,-20 °C

Storage Comment: Store as concentrated solution. Centrifuge briefly prior to opening vial. For short-term storage (1-2 weeks), store at 4°C. For long-term storage, aliquot and store at -20°C or below. Avoid multiple freeze-thaw cycles.



Western Blotting

Image 1. WB Image Sample (30 ug of whole cell lysate) A: NT2D1 B: U87-MG 7.5% SDS PAGE antibody diluted at 1:1000



Immunohistochemistry

Image 2. IHC-P Image PACSIN2 antibody [N2C3] detects PACSIN2 protein at cytosol on human colon carcinoma by immunohistochemical analysis. Sample: Paraffin-embedded human colon carcinoma. PACSIN2 antibody [N2C3] , dilution: 1:500.