

Datasheet for ABIN2855792

**anti-KLF12 antibody****2** Images[Go to Product page](#)

## Overview

Quantity:	100 µL
Target:	KLF12
Reactivity:	Human
Host:	Rabbit
Clonality:	Polyclonal
Conjugate:	This KLF12 antibody is un-conjugated
Application:	Western Blotting (WB)

## Product Details

Immunogen:	Recombinant protein encompassing a sequence within the center region of human KLF12. The exact sequence is proprietary.
Isotype:	IgG
Cross-Reactivity:	Human, Mouse
Characteristics:	Rabbit Polyclonal antibody to KLF12 (Kruppel-like factor 12) KLF12 antibody
Purification:	Purified by antigen-affinity chromatography.

## Target Details

Target:	KLF12
Alternative Name:	Kruppel like factor 12 ( <a href="#">KLF12 Products</a> )

## Target Details

**Background:** Activator protein-2 alpha (AP-2 alpha) is a developmentally-regulated transcription factor and important regulator of gene expression during vertebrate development and carcinogenesis. The protein encoded by this gene is a member of the Kruppel-like zinc finger protein family and can repress expression of the AP-2 alpha gene by binding to a specific site in the AP-2 alpha gene promoter. Repression by the encoded protein requires binding with a corepressor, CtBP1. Two transcript variants encoding different isoforms have been found for this gene.

Cellular Localization: Nucleus

**Molecular Weight:** 44 kDa

**Gene ID:** 11278

**UniProt:** [Q9Y4X4](#)

## Application Details

**Application Notes:** WB: 1:500-1:3000. Optimal dilutions/concentrations should be determined by the researcher. Not tested in other applications.

**Comment:** Positive Control: HepG2 , Mouse kidney

**Restrictions:** For Research Use only

## Handling

**Format:** Liquid

**Concentration:** 0.71 mg/mL

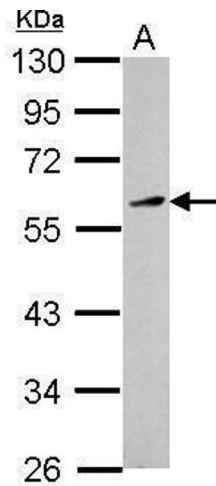
**Buffer:** 1XPBS ( pH 7), 1 % BSA, 20 % Glycerol, 0.01 % Thimerosal

**Preservative:** Thimerosal (Merthiolate)

**Precaution of Use:** This product contains Thimerosal (Merthiolate): a POISONOUS AND HAZARDOUS SUBSTANCE which should be handled by trained staff only.

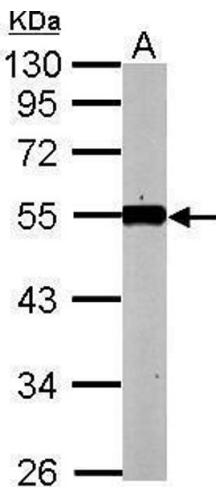
**Storage:** 4 °C,-20 °C

**Storage Comment:** Store as concentrated solution. Centrifuge briefly prior to opening vial. For short-term storage (1-2 weeks), store at 4°C. For long-term storage, aliquot and store at -20°C or below. Avoid multiple freeze-thaw cycles.



Western Blotting

**Image 1.** WB Image Sample (30 ug of whole cell lysate) A:  
HepG2 10% SDS PAGE antibody diluted at 1:1000



Western Blotting

**Image 2.** WB Image Sample (50 ug of whole cell lysate) A:  
mouse kidney 10% SDS PAGE antibody diluted at 1:1000