



Datasheet for ABIN2855795
anti-RCL1 antibody



[Go to Product page](#)

2 Images

Overview

Quantity:	100 µL
Target:	RCL1
Reactivity:	Human
Host:	Rabbit
Clonality:	Polyclonal
Conjugate:	This RCL1 antibody is un-conjugated
Application:	Western Blotting (WB), Immunohistochemistry (Paraffin-embedded Sections) (IHC (p))

Product Details

Immunogen:	Recombinant protein encompassing a sequence within the center region of human RCL1. The exact sequence is proprietary.
Isotype:	IgG
Cross-Reactivity:	Human, Mouse
Characteristics:	Rabbit Polyclonal antibody to RCL1 (RNA terminal phosphate cyclase-like 1) RCL1 antibody [N1C3]
Purification:	Purified by antigen-affinity chromatography.

Target Details

Target:	RCL1
Alternative Name:	RNA terminal phosphate cyclase like 1 (RCL1 Products)

Target Details

Background: Cellular Localization: Nucleus , nucleolus

Molecular Weight: 41 kDa

Gene ID: 10171

UniProt: [Q9Y2P8](#)

Application Details

Application Notes: WB: 1:5000-1:20000. IHC-P: 1:100-1:1000. Optimal dilutions/concentrations should be determined by the researcher. Not tested in other applications.

Comment: Positive Control: Mouse brain

Restrictions: For Research Use only

Handling

Format: Liquid

Concentration: 1 mg/mL

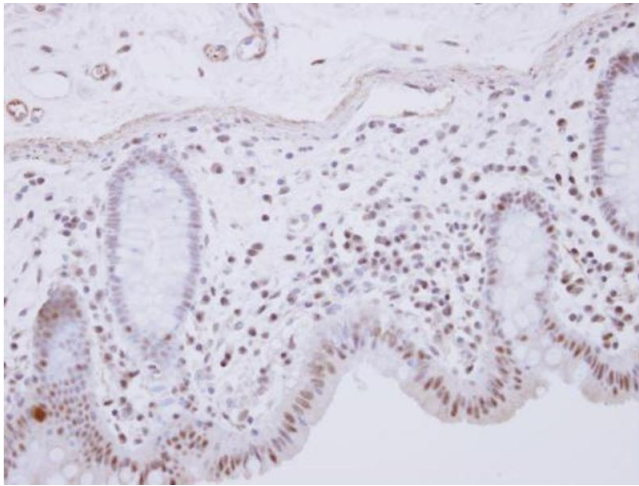
Buffer: 1XPBS (pH 7), 1 % BSA, 20 % Glycerol, 0.01 % Thimerosal

Preservative: Thimerosal (Merthiolate)

Precaution of Use: This product contains Thimerosal (Merthiolate): a POISONOUS AND HAZARDOUS SUBSTANCE which should be handled by trained staff only.

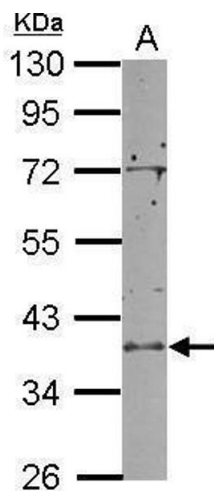
Storage: 4 °C,-20 °C

Storage Comment: Store as concentrated solution. Centrifuge briefly prior to opening vial. For short-term storage (1-2 weeks), store at 4°C. For long-term storage, aliquot and store at -20°C or below. Avoid multiple freeze-thaw cycles.



Immunohistochemistry

Image 1. IHC-P Image RCL1 antibody [N1C3] detects RCL1 protein at nucleus on human normal colon by immunohistochemical analysis. Sample: Paraffin-embedded normal colon. RCL1 antibody [N1C3] , dilution: 1:250.



Western Blotting

Image 2. WB Image Sample (50 ug of whole cell lysate) A: mouse brain 10% SDS PAGE antibody diluted at 1:10000