

Datasheet for ABIN2855799

anti-INPP5F antibody

5 Images

[Go to Product page](#)

Overview

Quantity:	100 µL
Target:	INPP5F
Reactivity:	Human
Host:	Rabbit
Clonality:	Polyclonal
Conjugate:	This INPP5F antibody is un-conjugated
Application:	Western Blotting (WB), Immunofluorescence (IF), Immunocytochemistry (ICC), Immunohistochemistry (Paraffin-embedded Sections) (IHC (p))

Product Details

Immunogen:	Recombinant protein encompassing a sequence within the center region of human INPP5F. The exact sequence is proprietary.
Isotype:	IgG
Specificity:	Knockdown/Knockout validation was supported by customer review data.
Cross-Reactivity:	Human
Characteristics:	Rabbit Polyclonal antibody to INPP5F (inositol polyphosphate-5-phosphatase F) INPP5F antibody
Purification:	Purified by antigen-affinity chromatography.
Grade:	KO Validated

Target Details

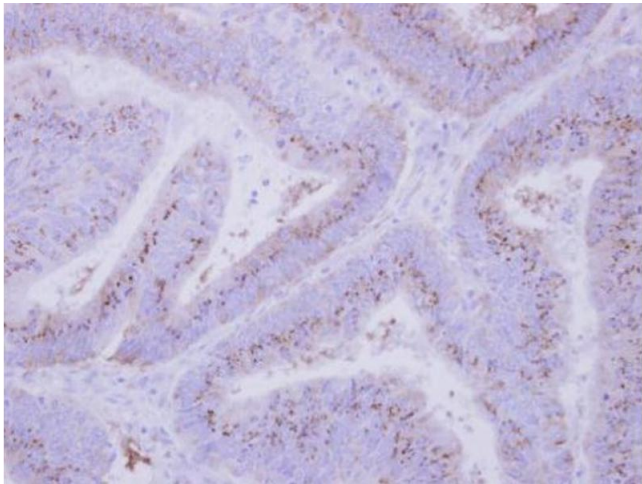
Target:	INPP5F
Alternative Name:	inositol polyphosphate-5-phosphatase F (INPP5F Products)
Background:	The protein encoded by this gene is an inositol 1,4,5-trisphosphate (InsP3) 5-phosphatase and contains a Sac domain. The activity of this protein is specific for phosphatidylinositol 4,5-bisphosphate and phosphatidylinositol 3,4,5-trisphosphate. Alternatively spliced transcript variants have been observed, but most of them are not thought to be protein-coding.
Molecular Weight:	128 kDa
Gene ID:	22876
UniProt:	Q9Y2H2

Application Details

Application Notes:	WB: 1:500-1:3000. ICC/IF: 1:100-1:1000. IHC-P: 1:100-1:1000. Optimal dilutions/concentrations should be determined by the researcher. Not tested in other applications.
Comment:	Validation: KO/KD
Restrictions:	For Research Use only

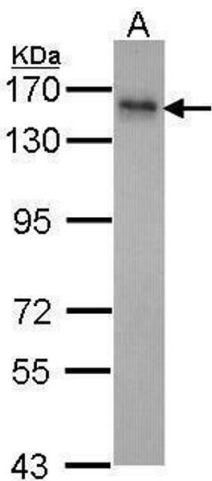
Handling

Format:	Liquid
Concentration:	0.79 mg/mL
Buffer:	0.1M Tris-Glycine (pH 7), 10 % Glycerol, 0.01 % Thimerosal
Preservative:	Thimerosal (Merthiolate)
Precaution of Use:	This product contains Thimerosal (Merthiolate): a POISONOUS AND HAZARDOUS SUBSTANCE which should be handled by trained staff only.
Storage:	4 °C, -20 °C
Storage Comment:	Store as concentrated solution. Centrifuge briefly prior to opening vial. For short-term storage (1-2 weeks), store at 4°C. For long-term storage, aliquot and store at -20°C or below. Avoid multiple freeze-thaw cycles.



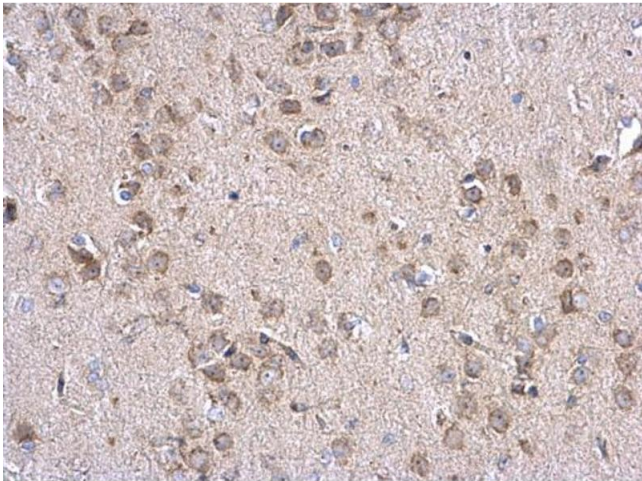
Immunohistochemistry

Image 1. IHC-P Image Immunohistochemical analysis of paraffin-embedded human colon carcinoma, using INPP5F, antibody at 1:500 dilution.



Western Blotting

Image 2. WB Image Sample (30 ug of whole cell lysate) A: HeLa 7.5% SDS PAGE INPP5F antibody antibody diluted at 1:1000



Immunohistochemistry

Image 3. IHC-P Image INPP5F antibody detects INPP5F protein at cytosol on mouse fore brain by immunohistochemical analysis. Sample: Paraffin-embedded mouse fore brain. INPP5F antibody , dilution: 1:500.

Please check the [product details page](#) for more images. Overall 5 images are available for ABIN2855799.