

Datasheet for ABIN2855809
anti-TIMELESS antibody (N-Term)

3 Images

[Go to Product page](#)

Overview

| | |
|----------------------|--|
| Quantity: | 100 µL |
| Target: | TIMELESS |
| Binding Specificity: | N-Term |
| Reactivity: | Human |
| Host: | Rabbit |
| Clonality: | Polyclonal |
| Conjugate: | This TIMELESS antibody is un-conjugated |
| Application: | Western Blotting (WB), Immunofluorescence (IF), Immunohistochemistry (Paraffin-embedded Sections) (IHC (p)), Immunocytochemistry (ICC) |

Product Details

| | |
|-----------------------------|--|
| Immunogen: | Recombinant protein encompassing a sequence within the N-terminus region of human TIMELESS. The exact sequence is proprietary. |
| Isotype: | IgG |
| Cross-Reactivity: | Mouse (Murine), Rat (Rattus) |
| Cross-Reactivity (Details): | Mouse (91 %), Rat (91 %) |
| Characteristics: | Rabbit Polyclonal antibody to Timeless (timeless homolog (Drosophila)) Timeless antibody [N1N2], N-term |
| Purification: | Purified by antigen-affinity chromatography. |

Target Details

| | |
|-------------------|---|
| Target: | TIMELESS |
| Alternative Name: | Timeless (TIMELESS Products) |
| Background: | <p>Required for normal progression of S-phase. Involved in the circadian rhythm autoregulatory loop. Negatively regulates CLOCK-NPAS2/BMAL1-induced transactivation of PER1 possibly via translocation of PER1 into the nucleus. Promotes TIPIN nuclear localization. Involved in cell survival after DNA damage or replication stress. May be specifically required for the ATR-Chk1 pathway in the replication checkpoint induced by hydroxyurea or ultraviolet light. May also play an important role in epithelial cell morphogenesis and formation of branching tubules.</p> <p>Cellular Localization: Nucleus</p> |
| Molecular Weight: | 139 kDa |
| Gene ID: | 8914 |
| Pathways: | Protein targeting to Nucleus , Photoperiodism |

Application Details

| | |
|--------------------|--|
| Application Notes: | <p>Suggested dilution Reference ICC/IF 1:100-1:1000* IHC (Formalin-fixed paraffin-embedded sections) 1:100-1:1000* Western blot 1:500-1:3000* Not tested in other applications. *Optimal dilutions/concentrations should be determined by the researcher.Suggested dilutionReferenceICC/IF1:100-1:1000* IHC (Formalin-fixed paraffin-embedded sections)1:100-1:1000* Western blot1:500-1:3000*</p> |
| Comment: | Positive Control: 293T , A431 , H1299 , HeLaS3 , HepG2 , Raji |
| Restrictions: | For Research Use only |

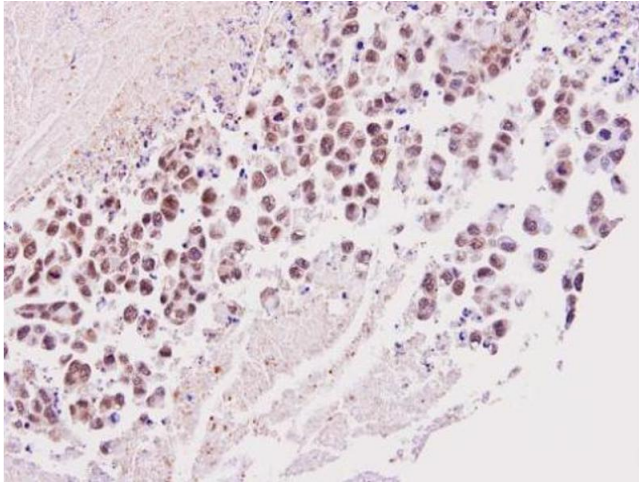
Handling

| | |
|--------------------|--|
| Format: | Liquid |
| Concentration: | 1 mg/mL |
| Buffer: | 0.1M Tris, 0.1M Glycine, 10 % Glycerol (pH 7). 0.01 % Thimerosal was added as a preservative. |
| Preservative: | Thimerosal (Merthiolate) |
| Precaution of Use: | This product contains Thimerosal (Merthiolate): a POISONOUS AND HAZARDOUS SUBSTANCE which should be handled by trained staff only. |
| Storage: | -20 °C |

Handling

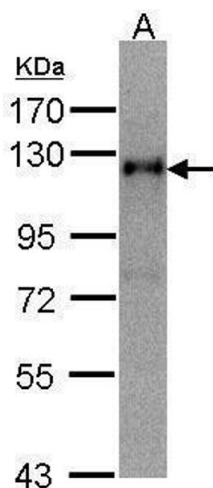
Storage Comment: Keep as concentrated solution. Aliquot and store at -20°C or below. Avoid multiple freeze-thaw cycles.

Images



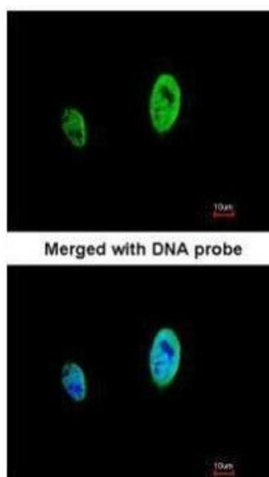
Immunohistochemistry

Image 1. IHC-P Image Immunohistochemical analysis of paraffin-embedded SNU16 xenograft, using TIMELESS, antibody at 1:100 dilution.



Western Blotting

Image 2. WB Image Sample(30 ug whole cell lysate) A:HeLa S3, 7.5% SDS PAGE antibody diluted at 1:500



Immunofluorescence

Image 3. ICC/IF Image Immunofluorescence analysis of paraformaldehyde-fixed HeLa, using TIMELESS, antibody at 1:500 dilution.