

Datasheet for ABIN2855810

anti-CES2 antibody**3** Images[Go to Product page](#)

Overview

Quantity:	100 µL
Target:	CES2
Reactivity:	Human
Host:	Rabbit
Clonality:	Polyclonal
Conjugate:	This CES2 antibody is un-conjugated
Application:	Western Blotting (WB), Immunofluorescence (IF), Immunohistochemistry (Paraffin-embedded Sections) (IHC (p)), Immunocytochemistry (ICC)

Product Details

Immunogen:	Recombinant protein encompassing a sequence within the center region of human CES2. The exact sequence is proprietary.
Isotype:	IgG
Cross-Reactivity:	Human
Characteristics:	Rabbit Polyclonal antibody to CES2 (carboxylesterase 2) CES2 antibody
Purification:	Purified by antigen-affinity chromatography.

Target Details

Target:	CES2
Alternative Name:	carboxylesterase 2 (CES2 Products)

Target Details

Background: Carboxylesterase 2 is a member of a large multigene family. The enzymes encoded by these genes are responsible for the hydrolysis of ester- and amide-bond-containing drugs such as cocaine and heroin. They also hydrolize long-chain fatty acid esters and thioesters. The specific function of this enzyme has not yet been determined, however, it is speculated that carboxylesterases may play a role in lipid metabolism and/or the blood-brain barrier system. Two alternatively spliced transcript variants encoding distinct isoforms have been found for this gene.

Cellular Localization: Endoplasmic reticulum lumen

Molecular Weight: 62 kDa

Gene ID: 8824

UniProt: [O00748](#)

Application Details

Application Notes: WB: 1:1000-1:10000. ICC/IF: 1:100-1:1000. IHC-P: 1:100-1:1000. Optimal dilutions/concentrations should be determined by the researcher. Not tested in other applications.

Comment: Positive Control: HepG2

Restrictions: For Research Use only

Handling

Format: Liquid

Concentration: 1 mg/mL

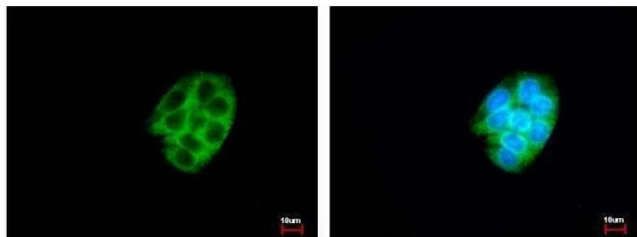
Buffer: 0.1M Tris-Glycine (pH 7), 10 % Glycerol, 0.01 % Thimerosal

Preservative: Thimerosal (Merthiolate)

Precaution of Use: This product contains Thimerosal (Merthiolate): a POISONOUS AND HAZARDOUS SUBSTANCE which should be handled by trained staff only.

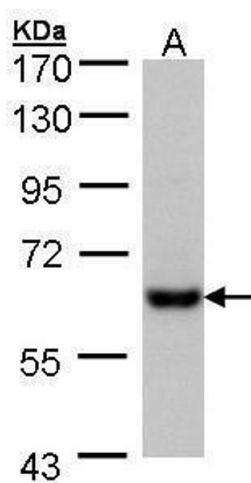
Storage: 4 °C, -20 °C

Storage Comment: Store as concentrated solution. Centrifuge briefly prior to opening vial. For short-term storage (1-2 weeks), store at 4°C. For long-term storage, aliquot and store at -20°C or below. Avoid multiple freeze-thaw cycles.



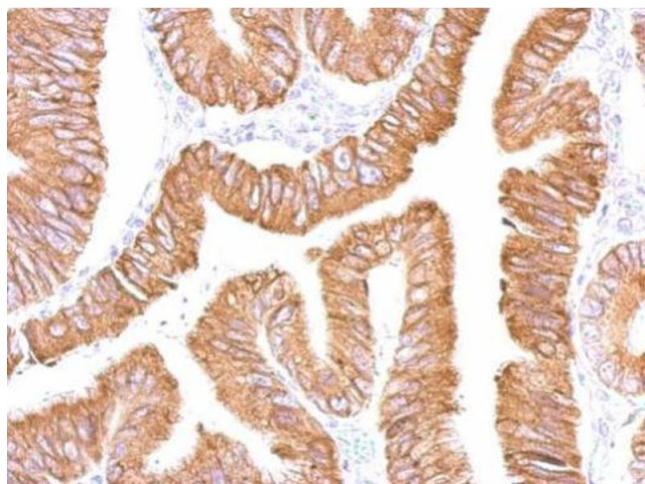
Immunofluorescence

Image 1. ICC/IF Image CES2 antibody detects CES2 protein at cytoplasm by immunofluorescent analysis. Sample: HepG2 cells were fixed in ice-cold MeOH for 5 min. Green: CES2 protein stained by CES2 antibody, diluted at 1:500. Blue: Hoechst 33342 staining.



Western Blotting

Image 2. WB Image Sample (30 ug of whole cell lysate) A: Hep G2, 7.5% SDS PAGE antibody diluted at 1:5000



Immunohistochemistry

Image 3. IHC-P Image CES2 antibody detects CES2 protein at cytosol on human colon by immunohistochemical analysis. Sample: Paraffin-embedded colon. CES2 antibody, dilution: 1:500.