



Datasheet for ABIN2855811  
**anti-C1R antibody**



[Go to Product page](#)

2 Images

Overview

Quantity:	100 µL
Target:	C1R
Reactivity:	Human
Host:	Rabbit
Clonality:	Polyclonal
Conjugate:	This C1R antibody is un-conjugated
Application:	Western Blotting (WB), Immunofluorescence (IF), Immunocytochemistry (ICC)

Product Details

Immunogen:	Recombinant protein encompassing a sequence within the center region of human C1r. The exact sequence is proprietary.
Isotype:	IgG
Cross-Reactivity:	Human, Mouse, Rat
Characteristics:	Rabbit Polyclonal antibody to C1r (complement component 1, r subcomponent) C1r antibody
Purification:	Purified by antigen-affinity chromatography.

Target Details

Target:	C1R
Alternative Name:	complement C1r ( <a href="#">C1R Products</a> )

## Target Details

---

Background: C1r B chain is a serine protease that combines with C1q and C1s to form C1, the first component of the classical pathway of the complement system.

---

Molecular Weight: 80 kDa

---

Gene ID: 715

---

UniProt: [P00736](#)

---

Pathways: [Complement System](#)

---

## Application Details

---

Application Notes: WB: 1:500-1:3000. ICC/IF: 1:100-1:1000. Optimal dilutions/concentrations should be determined by the researcher. Not tested in other applications.

---

Restrictions: For Research Use only

---

## Handling

---

Format: Liquid

---

Concentration: 1 mg/mL

---

Buffer: 0.1M Tris-Glycine ( pH 7), 10 % Glycerol, 0.01 % Thimerosal

---

Preservative: Thimerosal (Merthiolate)

---

Precaution of Use: This product contains Thimerosal (Merthiolate): a POISONOUS AND HAZARDOUS SUBSTANCE which should be handled by trained staff only.

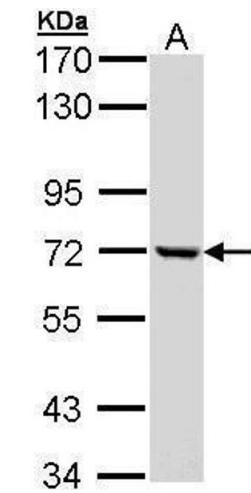
---

Storage: 4 °C,-20 °C

---

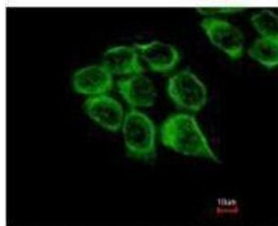
Storage Comment: Store as concentrated solution. Centrifuge briefly prior to opening vial. For short-term storage (1-2 weeks), store at 4°C. For long-term storage, aliquot and store at -20°C or below. Avoid multiple freeze-thaw cycles.

---

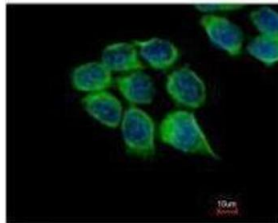


### Western Blotting

**Image 1.** WB Image Sample (30 ug of whole cell lysate) A:  
Molt-4 , 7.5% SDS PAGE antibody diluted at 1:1000



Costained with Hoechst 33342



### Immunofluorescence

**Image 2.** ICC/IF Image Immunofluorescence analysis of  
methanol-fixed HCT116, using C1r, antibody at 1:500  
dilution.