

Datasheet for ABIN2855815

anti-ENTPD3 antibody**2** Images[Go to Product page](#)

Overview

Quantity:	100 µL
Target:	ENTPD3
Reactivity:	Human
Host:	Rabbit
Clonality:	Polyclonal
Conjugate:	This ENTPD3 antibody is un-conjugated
Application:	Western Blotting (WB), Immunohistochemistry (Paraffin-embedded Sections) (IHC (p))

Product Details

Immunogen:	Recombinant protein encompassing a sequence within the center region of human ENTPD3. The exact sequence is proprietary.
Isotype:	IgG
Cross-Reactivity:	Human
Characteristics:	Rabbit Polyclonal antibody to ENTPD3 (ectonucleoside triphosphate diphosphohydrolase 3) ENTPD3 antibody [N3C3]
Purification:	Purified by antigen-affinity chromatography.

Target Details

Target:	ENTPD3
Alternative Name:	ectonucleoside triphosphate diphosphohydrolase 3 (ENTPD3 Products)

Target Details

Background: ENTPD3 is similar to E-type nucleotidases (NTPases). NTPases, such as CD39, mediate catabolism of extracellular nucleotides. ENTPD3 contains 4 apyrase-conserved regions which is characteristic of NTPases.

Cellular Localization: Membrane, Multi-pass membrane protein

Molecular Weight: 59 kDa

Gene ID: 956

UniProt: [075355](#)

Application Details

Application Notes: WB: 1:500-1:3000. IHC-P: 1:100-1:1000. Optimal dilutions/concentrations should be determined by the researcher. Not tested in other applications.

Comment: Positive Control: Molt-4

Restrictions: For Research Use only

Handling

Format: Liquid

Concentration: 0.41 mg/mL

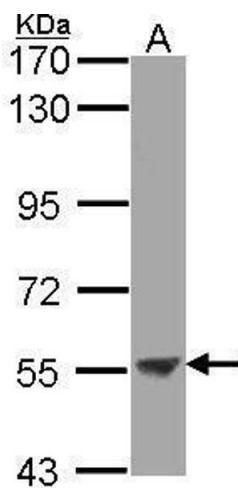
Buffer: 0.1M Tris-Glycine (pH 7), 10 % Glycerol, 0.01 % Thimerosal

Preservative: Thimerosal (Merthiolate)

Precaution of Use: This product contains Thimerosal (Merthiolate): a POISONOUS AND HAZARDOUS SUBSTANCE which should be handled by trained staff only.

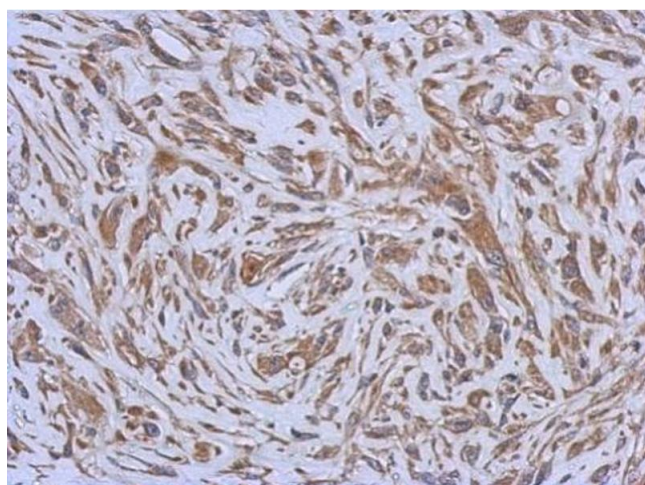
Storage: 4 °C, -20 °C

Storage Comment: Store as concentrated solution. Centrifuge briefly prior to opening vial. For short-term storage (1-2 weeks), store at 4°C. For long-term storage, aliquot and store at -20°C or below. Avoid multiple freeze-thaw cycles.



Western Blotting

Image 1. WB Image Sample (30 ug of whole cell lysate) A: Molt-4 , 7.5% SDS PAGE antibody diluted at 1:2000



Immunohistochemistry

Image 2. IHC-P Image Immunohistochemical analysis of paraffin-embedded U373 xenograft, using ENTPD3, antibody at 1:500 dilution.