

Datasheet for ABIN2855816

anti-RAB3B antibody[Go to Product page](#)**1** Image

Overview

Quantity:	100 µL
Target:	RAB3B
Reactivity:	Human
Host:	Rabbit
Clonality:	Polyclonal
Conjugate:	This RAB3B antibody is un-conjugated
Application:	Western Blotting (WB)

Product Details

Immunogen:	Recombinant protein encompassing a sequence within the center region of human RAB3B. The exact sequence is proprietary.
Isotype:	IgG
Cross-Reactivity:	Human
Characteristics:	Rabbit Polyclonal antibody to RAB3B (RAB3B, member RAS oncogene family) RAB3B antibody [N1C3]
Purification:	Purified by antigen-affinity chromatography.

Target Details

Target:	RAB3B
Alternative Name:	RAB3B, member RAS oncogene family (RAB3B Products)

Target Details

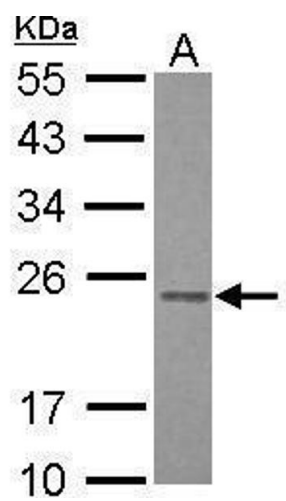
Background:	Protein transport. Probably involved in vesicular traffic.
	Cellular Localization: Cell membrane, Lipid-anchor, Cytoplasmic side
Molecular Weight:	25 kDa
Gene ID:	5865
UniProt:	P20337

Application Details

Application Notes:	WB: 1:500-1:3000. Optimal dilutions/concentrations should be determined by the researcher. Not tested in other applications.
Comment:	Positive Control: HepG2 Validation: Orthogonal
Restrictions:	For Research Use only

Handling

Format:	Liquid
Concentration:	1 mg/mL
Buffer:	1XPBS (pH 7), 1 % BSA, 20 % Glycerol, 0.01 % Thimerosal
Preservative:	Thimerosal (Merthiolate)
Precaution of Use:	This product contains Thimerosal (Merthiolate): a POISONOUS AND HAZARDOUS SUBSTANCE which should be handled by trained staff only.
Storage:	4 °C,-20 °C
Storage Comment:	Store as concentrated solution. Centrifuge briefly prior to opening vial. For short-term storage (1-2 weeks), store at 4°C. For long-term storage, aliquot and store at -20°C or below. Avoid multiple freeze-thaw cycles.



Western Blotting

Image 1. WB Image Sample (30 ug of whole cell lysate) A:
HepG2 12% SDS PAGE antibody diluted at 1:1000