

Datasheet for ABIN2855820

anti-CLIC3 antibody**3** Images[Go to Product page](#)

Overview

Quantity:	100 µL
Target:	CLIC3
Reactivity:	Human
Host:	Rabbit
Clonality:	Polyclonal
Conjugate:	This CLIC3 antibody is un-conjugated
Application:	Western Blotting (WB), Immunohistochemistry (Paraffin-embedded Sections) (IHC (p))

Product Details

Immunogen:	Recombinant protein encompassing a sequence within the center region of human CLIC3. The exact sequence is proprietary.
Isotype:	IgG
Cross-Reactivity:	Human, Mouse
Characteristics:	Rabbit polyclonal antibody to CLIC3 (chloride intracellular channel 3) CLIC3 antibody [N1C3]
Purification:	Purified by antigen-affinity chromatography.

Target Details

Target:	CLIC3
Alternative Name:	chloride intracellular channel 3 (CLIC3 Products)

Target Details

Background: Chloride channels are a diverse group of proteins that regulate fundamental cellular processes including stabilization of cell membrane potential, transepithelial transport, maintenance of intracellular pH, and regulation of cell volume. Chloride intracellular channel 3 is a member of the p64 family and is predominantly localized in the nucleus and stimulates chloride ion channel activity. In addition, this protein may participate in cellular growth control, based on its association with ERK7, a member of the MAP kinase family.

Cellular Localization: Nucleus, Membrane, Cytoplasm

Molecular Weight: 27 kDa

Gene ID: 9022

UniProt: [O95833](#)

Application Details

Application Notes: WB: 1:500-1:3000. IHC-P: 1:100-1:1000. Optimal dilutions/concentrations should be determined by the researcher. Not tested in other applications.

Comment: Positive Control: HeLaS3

Restrictions: For Research Use only

Handling

Format: Liquid

Concentration: 0.74 mg/mL

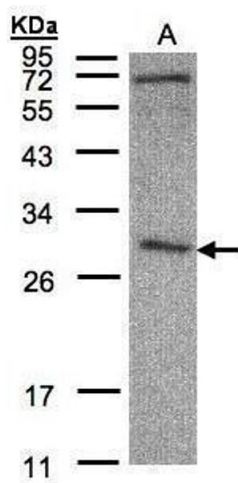
Buffer: 0.1M Tris-Glycine (pH 7), 10 % Glycerol, 0.01 % Thimerosal

Preservative: Thimerosal (Merthiolate)

Precaution of Use: This product contains Thimerosal (Merthiolate): a POISONOUS AND HAZARDOUS SUBSTANCE which should be handled by trained staff only.

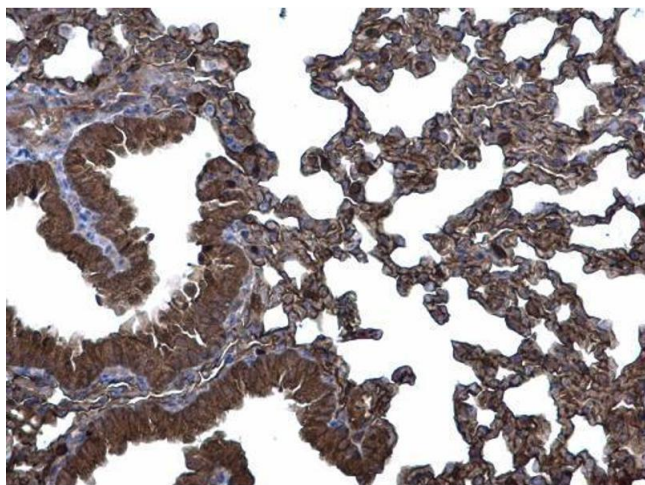
Storage: 4 °C, -20 °C

Storage Comment: Store as concentrated solution. Centrifuge briefly prior to opening vial. For short-term storage (1-2 weeks), store at 4°C. For long-term storage, aliquot and store at -20°C or below. Avoid multiple freeze-thaw cycles.



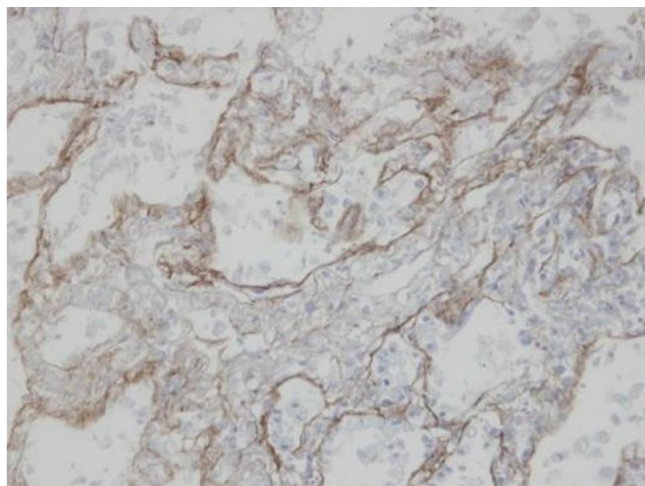
Western Blotting

Image 1. WB Image Sample(30 µg of whole cell lysate)
A:HeLa S3, 12% SDS PAGE antibody diluted at 1:500



Immunohistochemistry

Image 2. IHC-P Image CLIC3 antibody [N1C3] detects CLIC3 protein at membrane and cytoplasm on mouse lung by immunohistochemical analysis. Sample: Paraffin-embedded mouse lung. CLIC3 antibody [N1C3] , diluted at 1:500.



Immunohistochemistry

Image 3. IHC-P Image Immunohistochemical analysis of paraffin-embedded human T(IV)(lung CA), using CLIC3, antibody at 1:100 dilution.