

Datasheet for ABIN2855822
anti-HLA-DPA1 antibody

3 Images

[Go to Product page](#)

Overview

Quantity:	100 µL
Target:	HLA-DPA1
Reactivity:	Human
Host:	Rabbit
Clonality:	Polyclonal
Conjugate:	This HLA-DPA1 antibody is un-conjugated
Application:	Western Blotting (WB), Immunohistochemistry (Paraffin-embedded Sections) (IHC (p)), Immunofluorescence (IF), Immunocytochemistry (ICC), Immunohistochemistry (Frozen Sections) (IHC (fro))

Product Details

Immunogen:	Recombinant protein encompassing a sequence within the center region of human HLA-DPA1. The exact sequence is proprietary.
Isotype:	IgG
Cross-Reactivity:	Human, Mouse
Characteristics:	Rabbit Polyclonal antibody to HLA-DPA1 (major histocompatibility complex, class II, DP alpha 1) HLA-DPA1 antibody
Purification:	Purified by antigen-affinity chromatography.

Target Details

Target:	HLA-DPA1
---------	----------

Target Details

Alternative Name:	major histocompatibility complex, class II, DP alpha 1 (HLA-DPA1 Products)
Background:	<p>HLA-DPA1 belongs to the HLA class II alpha chain paralogues. This class II molecule is a heterodimer consisting of an alpha (DPA) and a beta (DPB) chain, both anchored in the membrane. It plays a central role in the immune system by presenting peptides derived from extracellular proteins. Class II molecules are expressed in antigen presenting cells (APC: B lymphocytes, dendritic cells, macrophages). The alpha chain is approximately 33-35 kDa and its gene contains 5 exons. Exon one encodes the leader peptide, exons 2 and 3 encode the two extracellular domains, exon 4 encodes the transmembrane domain and the cytoplasmic tail. Within the DP molecule both the alpha chain and the beta chain contain the polymorphisms specifying the peptide binding specificities, resulting in up to 4 different molecules.</p> <p>Cellular Localization: Membrane, Single-pass type I membrane protein</p>
Molecular Weight:	29 kDa
Gene ID:	3113
UniProt:	P20036
Pathways:	TCR Signaling , Cancer Immune Checkpoints , Human Leukocyte Antigen (HLA) in Adaptive Immune Response

Application Details

Application Notes:	WB: 1:500-1:3000. ICC/IF: 1:100-1:1000. IHC-P: 1:100-1:1000. Optimal dilutions/concentrations should be determined by the researcher. Not tested in other applications.
Restrictions:	For Research Use only

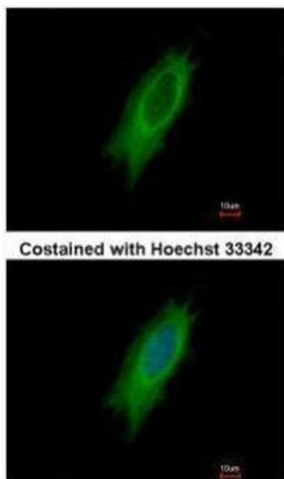
Handling

Format:	Liquid
Concentration:	1 mg/mL
Buffer:	1XPBS (pH 7), 1 % BSA, 20 % Glycerol, 0.01 % Thimerosal
Preservative:	Thimerosal (Merthiolate)
Precaution of Use:	This product contains Thimerosal (Merthiolate): a POISONOUS AND HAZARDOUS SUBSTANCE which should be handled by trained staff only.
Storage:	4 °C,-20 °C

Handling

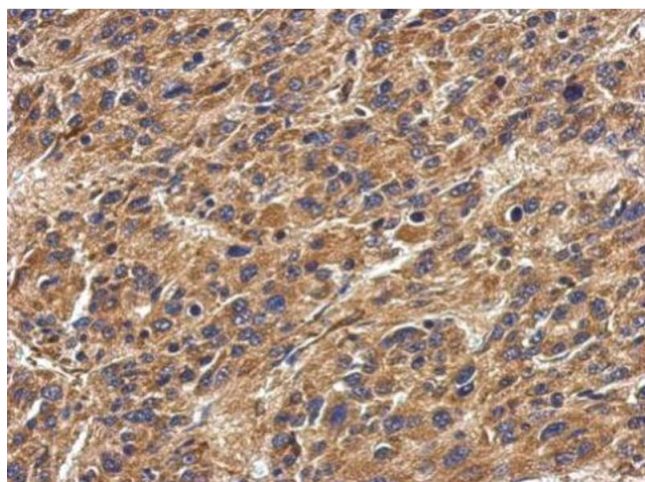
Storage Comment: Store as concentrated solution. Centrifuge briefly prior to opening vial. For short-term storage (1-2 weeks), store at 4°C. For long-term storage, aliquot and store at -20°C or below. Avoid multiple freeze-thaw cycles.

Validation report #104383 for Cleavage Under Targets and Release Using Nuclease (CUT&RUN)



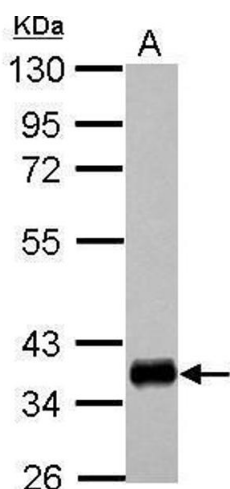
Immunofluorescence

Image 1. ICC/IF Image Immunofluorescence analysis of methanol-fixed HeLa, using HLA-DPA1, antibody at 1:500 dilution.



Immunohistochemistry

Image 2. IHC-P Image Immunohistochemical analysis of paraffin-embedded human hepatoma, using HLA-DPA1, antibody at 1:500 dilution.



Western Blotting

Image 3. WB Image Sample (30 ug of whole cell lysate) A: Raji 10% SDS PAGE antibody diluted at 1:1000