

Datasheet for ABIN2855832

anti-PCYT2 antibody**2** Images[Go to Product page](#)

Overview

Quantity:	100 µL
Target:	PCYT2
Reactivity:	Human
Host:	Rabbit
Clonality:	Polyclonal
Conjugate:	This PCYT2 antibody is un-conjugated
Application:	Western Blotting (WB), Immunohistochemistry (Paraffin-embedded Sections) (IHC (p))

Product Details

Immunogen:	Recombinant protein encompassing a sequence within the center region of human PCYT2. The exact sequence is proprietary.
Isotype:	IgG
Cross-Reactivity:	Human
Characteristics:	Rabbit Polyclonal antibody to PCYT2 (phosphate cytidyltransferase 2, ethanolamine) PCYT2 antibody
Purification:	Purified by antigen-affinity chromatography.

Target Details

Target:	PCYT2
Alternative Name:	phosphate cytidyltransferase 2, ethanolamine (PCYT2 Products)

Target Details

Background: This gene encodes an enzyme that catalyzes the formation of CDP-ethanolamine from CTP and phosphoethanolamine in the Kennedy pathway of phospholipid synthesis. Alternative splicing results in multiple transcript variants.

Molecular Weight: 44 kDa

Gene ID: 5833

UniProt: [Q99447](#)

Application Details

Application Notes: WB: 1:500-1:3000. IHC-P: 1:100-1:1000. Optimal dilutions/concentrations should be determined by the researcher. Not tested in other applications.

Comment: Positive Control: HepG2

Restrictions: For Research Use only

Handling

Format: Liquid

Concentration: 1 mg/mL

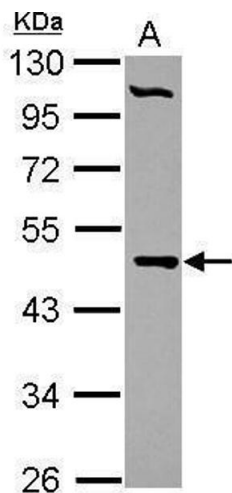
Buffer: 0.1M Tris-Glycine (pH 7), 20 % Glycerol, 0.01 % Thimerosal

Preservative: Thimerosal (Merthiolate)

Precaution of Use: This product contains Thimerosal (Merthiolate): a POISONOUS AND HAZARDOUS SUBSTANCE which should be handled by trained staff only.

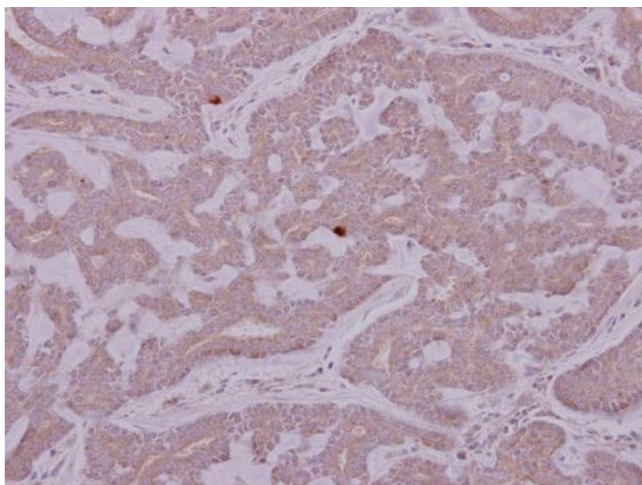
Storage: 4 °C, -20 °C

Storage Comment: Store as concentrated solution. Centrifuge briefly prior to opening vial. For short-term storage (1-2 weeks), store at 4°C. For long-term storage, aliquot and store at -20°C or below. Avoid multiple freeze-thaw cycles.



Western Blotting

Image 1. WB Image Sample (30 ug of whole cell lysate) A: HepG2 10% SDS PAGE antibody diluted at 1:1000



Immunohistochemistry

Image 2. IHC-P Image PCYT2 antibody detects PCYT2 protein at cytoplasm on human breast cancer by immunohistochemical analysis. Sample: Paraffin-embedded breast cancer. PCYT2 antibody , dilution: 1:500.