



Datasheet for ABIN2855834  
**anti-LZTFL1 antibody**



[Go to Product page](#)

2 Images

Overview

Quantity:	100 µL
Target:	LZTFL1
Reactivity:	Human
Host:	Rabbit
Clonality:	Polyclonal
Conjugate:	This LZTFL1 antibody is un-conjugated
Application:	Western Blotting (WB), Immunofluorescence (IF), Immunocytochemistry (ICC)

Product Details

Immunogen:	Recombinant protein encompassing a sequence within the center region of human LZTFL1. The exact sequence is proprietary.
Isotype:	IgG
Cross-Reactivity:	Human, Mouse, Rat
Characteristics:	Rabbit Polyclonal antibody to LZTFL1 (leucine zipper transcription factor-like 1) LZTFL1 antibody [N1C3]
Purification:	Purified by antigen-affinity chromatography.

Target Details

Target:	LZTFL1
Alternative Name:	leucine zipper transcription factor like 1 ( <a href="#">LZTFL1 Products</a> )

## Target Details

---

Molecular Weight: 35 kDa

Gene ID: 54585

UniProt: [Q9NQ48](#)

## Application Details

---

Application Notes: WB: 1:500-1:3000. ICC/IF: 1:100-1:1000. Optimal dilutions/concentrations should be determined by the researcher. Not tested in other applications.

Comment: Positive Control: Jurkat , mouse testis , rat testis

Restrictions: For Research Use only

## Handling

---

Format: Liquid

Concentration: 1 mg/mL

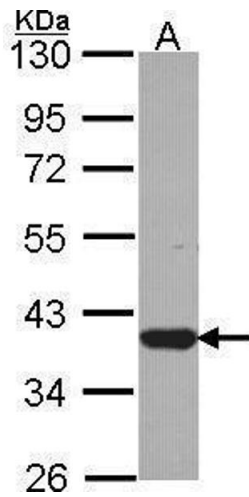
Buffer: 0.1M Tris-Glycine ( pH 7), 20 % Glycerol, 0.01 % Thimerosal

Preservative: Thimerosal (Merthiolate)

Precaution of Use: This product contains Thimerosal (Merthiolate): a POISONOUS AND HAZARDOUS SUBSTANCE which should be handled by trained staff only.

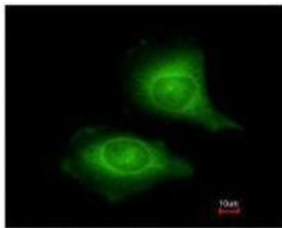
Storage: 4 °C,-20 °C

Storage Comment: Store as concentrated solution. Centrifuge briefly prior to opening vial. For short-term storage (1-2 weeks), store at 4°C. For long-term storage, aliquot and store at -20°C or below. Avoid multiple freeze-thaw cycles.



### Western Blotting

**Image 1.** WB Image Sample (30 ug of whole cell lysate) A:  
JurKat 10% SDS PAGE antibody diluted at 1:1000



Costained with Hoechst 33342



### Immunofluorescence

**Image 2.** ICC/IF Image Immunofluorescence analysis of  
methanol-fixed HeLa, using LZTFL1, antibody at 1:200  
dilution.