

Datasheet for ABIN2855836

anti-FAM48A/P38IP antibody (Internal Region)[Go to Product page](#)**1** Image

Overview

Quantity:	100 µL
Target:	FAM48A/P38IP (SUPT20H)
Binding Specificity:	Internal Region
Reactivity:	Human
Host:	Rabbit
Clonality:	Polyclonal
Conjugate:	This FAM48A/P38IP antibody is un-conjugated
Application:	Western Blotting (WB)

Product Details

Immunogen:	Recombinant protein encompassing a sequence within the center region of human FAM48A. The exact sequence is proprietary.
Isotype:	IgG
Cross-Reactivity:	Mouse (Murine), Rat (Rattus), Cow (Bovine)
Cross-Reactivity (Details):	Mouse (93 %), Rat (95 %), Bovine (95 %)
Characteristics:	Rabbit Polyclonal antibody to FAM48A (family with sequence similarity 48, member A) FAM48A antibody [N2C1], Internal
Purification:	Purified by antigen-affinity chromatography.

Target Details

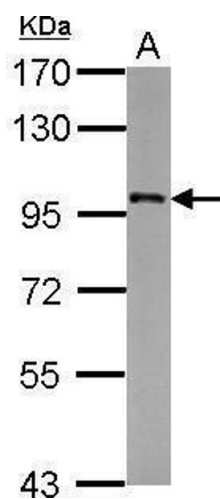
Target:	FAM48A/P38IP (SUPT20H)
Alternative Name:	FAM48A (SUPT20H Products)
Background:	Required for MAP kinase p38 (MAPK11, MAPK12, MAPK13 and/or MAPK14) activation during gastrulation. Required for down-regulation of E-cadherin during gastrulation by regulating E-cadherin protein level downstream from NCK-interacting kinase (NIK) and independently of the regulation of transcription by Fgf signaling and Snail.
Molecular Weight:	86 kDa
Gene ID:	55578

Application Details

Application Notes:	Suggested dilution Reference Western blot 1:500-1:3000* Not tested in other applications. *Optimal dilutions/concentrations should be determined by the researcher.Suggested dilutionReferenceWestern blot1:500-1:3000*
Comment:	Positive Control: 293T
Restrictions:	For Research Use only

Handling

Format:	Liquid
Concentration:	1 mg/mL
Buffer:	1XPBS, 1 % BSA, 20 % Glycerol (pH 7). 0.01 % Thimerosal was added as a preservative.
Preservative:	Thimerosal (Merthiolate)
Precaution of Use:	This product contains Thimerosal (Merthiolate): a POISONOUS AND HAZARDOUS SUBSTANCE which should be handled by trained staff only.
Storage:	-20 °C
Storage Comment:	Keep as concentrated solution. Aliquot and store at -20°C or below. Avoid multiple freeze-thaw cycles.



Western Blotting

Image 1. WB Image Sample (30 ug of whole cell lysate) A:
293T 7.5% SDS PAGE antibody diluted at 1:1000