



[Go to Product page](#)

Datasheet for ABIN2855837

anti-BCKDK antibody

3 Images

Overview

Quantity:	100 µL
Target:	BCKDK
Reactivity:	Human
Host:	Rabbit
Clonality:	Polyclonal
Conjugate:	This BCKDK antibody is un-conjugated
Application:	Western Blotting (WB), Immunofluorescence (IF), Immunohistochemistry (Paraffin-embedded Sections) (IHC (p)), Immunocytochemistry (ICC)

Product Details

Immunogen:	Recombinant protein encompassing a sequence within the center region of human BCKDK. The exact sequence is proprietary.
Isotype:	IgG
Cross-Reactivity:	Human, Mouse, Rat
Characteristics:	Rabbit Polyclonal antibody to BCKDK (branched chain ketoacid dehydrogenase kinase) BCKDK antibody [N2C3]
Purification:	Purified by antigen-affinity chromatography.
Grade:	KO Validated

Target Details

Target:	BCKDK
---------	-------

Target Details

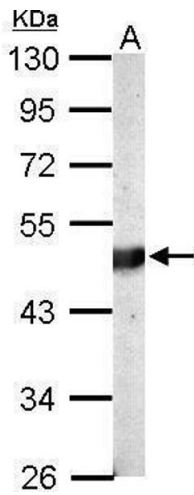
Alternative Name:	branched chain ketoacid dehydrogenase kinase (BCKDK Products)
Background:	Catalyzes the phosphorylation and inactivation of the branched-chain alpha-ketoacid dehydrogenase complex, the key regulatory enzyme of the valine, leucine and isoleucine catabolic pathways. Key enzyme that regulate the activity state of the BCKD complex. Cellular Localization: Mitochondrion matrix
Molecular Weight:	46 kDa
Gene ID:	10295
UniProt:	O14874
Pathways:	SARS-CoV-2 Protein Interactome

Application Details

Application Notes:	WB: 1:500-1:20000. IHC-P: 1:100-1:1000. Optimal dilutions/concentrations should be determined by the researcher. Not tested in other applications.
Comment:	Positive Control: Mouse brain , rat kidney , rat brain Validation: KO/KD, Orthogonal
Restrictions:	For Research Use only

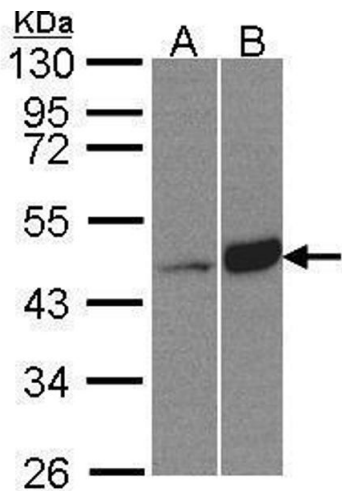
Handling

Format:	Liquid
Concentration:	0.35 mg/mL
Buffer:	1XPBS pH 7, 1 % BSA, 20 % Glycerol, 0.025 % ProClin 300
Preservative:	ProClin
Precaution of Use:	This product contains ProClin: a POISONOUS AND HAZARDOUS SUBSTANCE which should be handled by trained staff only.
Storage:	4 °C,-20 °C
Storage Comment:	Store as concentrated solution. Centrifuge briefly prior to opening vial. For short-term storage (1-2 weeks), store at 4°C. For long-term storage, aliquot and store at -20°C or below. Avoid multiple freeze-thaw cycles.



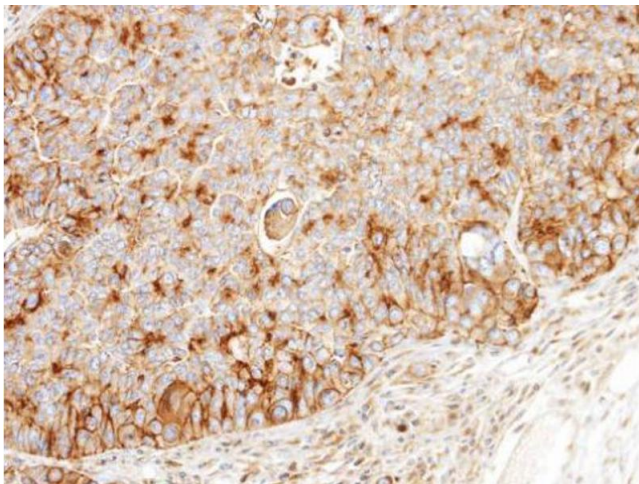
Western Blotting

Image 1. WB Image Sample (20 ug of whole cell lysate) A: mouse brain 10% SDS PAGE antibody diluted at 1:10000



Western Blotting

Image 2. WB Image Sample(30 µg of whole cell lysate) A:HeLa S3, B:Raji, 10% SDS PAGE antibody diluted at 1:500



Immunohistochemistry

Image 3. IHC-P Image Immunohistochemical analysis of paraffin-embedded SW480 xenograft, using BCKDK, antibody at 1:100 dilution.