



Datasheet for ABIN2855839
anti-GLOD4 antibody



[Go to Product page](#)

3 Images

Overview

Quantity:	100 µL
Target:	GLOD4
Reactivity:	Human
Host:	Rabbit
Clonality:	Polyclonal
Conjugate:	This GLOD4 antibody is un-conjugated
Application:	Western Blotting (WB), Immunohistochemistry (Paraffin-embedded Sections) (IHC (p))

Product Details

Immunogen:	Recombinant protein encompassing a sequence within the center region of human GLOD4. The exact sequence is proprietary.
Isotype:	IgG
Cross-Reactivity:	Human, Mouse
Characteristics:	Rabbit Polyclonal antibody to GLOD4 (glyoxalase domain containing 4) GLOD4 antibody [N1C3]
Purification:	Purified by antigen-affinity chromatography.

Target Details

Target:	GLOD4
Alternative Name:	glyoxalase domain containing 4 (GLOD4 Products)

Target Details

Background: Cellular Localization: Mitochondrion

Molecular Weight: 35 kDa

Gene ID: 51031

UniProt: [Q9HC38](#)

Application Details

Application Notes: WB: 1:500-1:3000. IHC-P: 1:100-1:1000. Optimal dilutions/concentrations should be determined by the researcher. Not tested in other applications.

Comment: Positive Control: Mouse brain , HepG2

Restrictions: For Research Use only

Handling

Format: Liquid

Concentration: 1 mg/mL

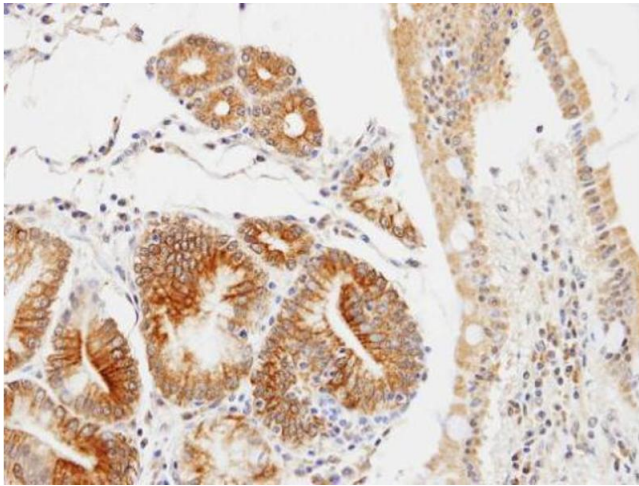
Buffer: 0.1M Tris-Glycine (pH 7), 10 % Glycerol, 0.01 % Thimerosal

Preservative: Thimerosal (Merthiolate)

Precaution of Use: This product contains Thimerosal (Merthiolate): a POISONOUS AND HAZARDOUS SUBSTANCE which should be handled by trained staff only.

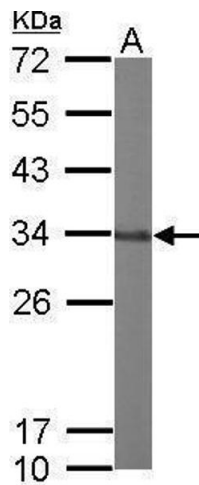
Storage: 4 °C,-20 °C

Storage Comment: Store as concentrated solution. Centrifuge briefly prior to opening vial. For short-term storage (1-2 weeks), store at 4°C. For long-term storage, aliquot and store at -20°C or below. Avoid multiple freeze-thaw cycles.



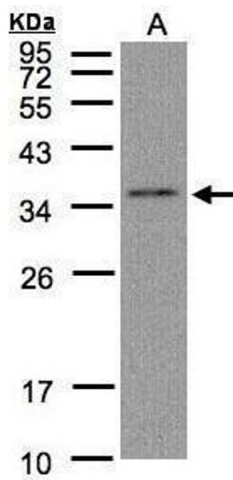
Immunohistochemistry

Image 1. IHC-P Image Immunohistochemical analysis of paraffin-embedded human gastric , using GLOD4, antibody at 1:100 dilution.



Western Blotting

Image 2. WB Image Sample (50 ug of whole cell lysate) A: Mouse brain 12% SDS PAGE antibody diluted at 1:1000



Western Blotting

Image 3. WB Image Sample(30 µg of whole cell lysate) A:Hep G2, 12% SDS PAGE antibody diluted at 1:1000