

Datasheet for ABIN2855840

anti-TMEM59 antibody

5 Images

[Go to Product page](#)

Overview

Quantity:	100 µL
Target:	TMEM59
Reactivity:	Human
Host:	Rabbit
Clonality:	Polyclonal
Conjugate:	This TMEM59 antibody is un-conjugated
Application:	Western Blotting (WB), Immunohistochemistry (Paraffin-embedded Sections) (IHC (p))

Product Details

Immunogen:	Recombinant protein encompassing a sequence within the center region of human TMEM59. The exact sequence is proprietary.
Isotype:	IgG
Cross-Reactivity:	Human, Mouse, Rat
Characteristics:	Rabbit Polyclonal antibody to TMEM59 (transmembrane protein 59) TMEM59 antibody
Purification:	Purified by antigen-affinity chromatography.

Target Details

Target:	TMEM59
Alternative Name:	transmembrane protein 59 (TMEM59 Products)

Target Details

Background: Modulates the O-glycosylation and complex N-glycosylation steps occurring during the Golgi maturation of several proteins such as APP, BACE1, SEAP or PRNP. Inhibits APP transport to the cell surface and further shedding.

Cellular Localization: Membrane, Single-pass type I membrane protein

Molecular Weight: 36 kDa

Gene ID: 9528

UniProt: [Q9BXS4](#)

Application Details

Application Notes: WB: 1:500-1:3000. IHC-P: 1:100-1:1000. Optimal dilutions/concentrations should be determined by the researcher. Not tested in other applications.

Comment: Positive Control: A431 , Mouse liver , rat kidney

Restrictions: For Research Use only

Handling

Format: Liquid

Concentration: 1 mg/mL

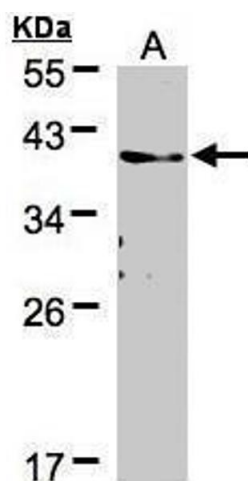
Buffer: 0.1M Tris-Glycine (pH 7), 10 % Glycerol, 0.01 % Thimerosal

Preservative: Thimerosal (Merthiolate)

Precaution of Use: This product contains Thimerosal (Merthiolate): a POISONOUS AND HAZARDOUS SUBSTANCE which should be handled by trained staff only.

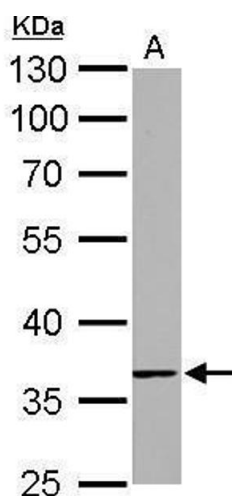
Storage: 4 °C,-20 °C

Storage Comment: Store as concentrated solution. Centrifuge briefly prior to opening vial. For short-term storage (1-2 weeks), store at 4°C. For long-term storage, aliquot and store at -20°C or below. Avoid multiple freeze-thaw cycles.



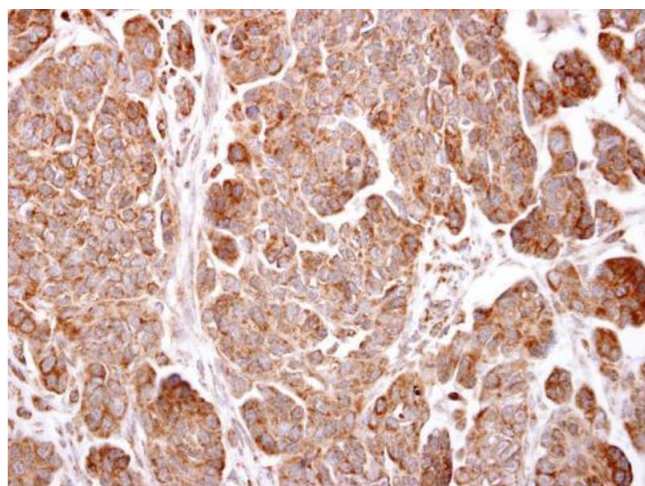
Western Blotting

Image 1. WB Image Sample(30 µg of whole cell lysate)
A:A431, 12% SDS PAGE antibody diluted at 1:500



Western Blotting

Image 2. WB Image TMEM59 antibody detects TMEM59 protein by Western blot analysis. A. 50 µg rat kidney lysate/extract 10 % SDS-PAGE TMEM59 antibody , dilution: 1:1000



Immunohistochemistry

Image 3. IHC-P Image TMEM59 antibody detects TMEM59 protein at cytosol on human ovarian carcinoma by immunohistochemical analysis. Sample: Paraffin-embedded human ovarian carcinoma. TMEM59 antibody , dilution: 1:500.

Please check the [product details page](#) for more images. Overall 5 images are available for ABIN2855840.