

Datasheet for ABIN2855842

anti-JAM2 antibody

5 Images

[Go to Product page](#)

Overview

Quantity:	100 µL
Target:	JAM2
Reactivity:	Human
Host:	Rabbit
Clonality:	Polyclonal
Conjugate:	This JAM2 antibody is un-conjugated
Application:	Western Blotting (WB), Immunohistochemistry (IHC), Immunohistochemistry (Paraffin-embedded Sections) (IHC (p))

Product Details

Immunogen:	Recombinant protein encompassing a sequence within the center region of human JAM-B. The exact sequence is proprietary.
Isotype:	IgG
Cross-Reactivity:	Human
Characteristics:	Rabbit Polyclonal antibody to JAM-B (junctional adhesion molecule 2) JAM-B antibody
Purification:	Purified by antigen-affinity chromatography.

Target Details

Target:	JAM2
Alternative Name:	junctional adhesion molecule 2 (JAM2 Products)

Target Details

Background: Tight junctions represent one mode of cell-to-cell adhesion in epithelial or endothelial cell sheets, forming continuous seals around cells and serving as a physical barrier to prevent solutes and water from passing freely through the paracellular space. The protein encoded by this immunoglobulin superfamily gene member is localized in the tight junctions between high endothelial cells. It acts as an adhesive ligand for interacting with a variety of immune cell types and may play a role in lymphocyte homing to secondary lymphoid organs.

Cellular Localization: Cell junction , tight junction (By similarity) , Cell membrane, Single-pass type I membrane protein (By similarity)

Molecular Weight: 33 kDa

Gene ID: 58494

UniProt: [P57087](#)

Application Details

Application Notes: WB: 1:500-1:3000. IHC-P: 1:100-1:1000. Optimal dilutions/concentrations should be determined by the researcher. Not tested in other applications.

Restrictions: For Research Use only

Handling

Format: Liquid

Concentration: 1 mg/mL

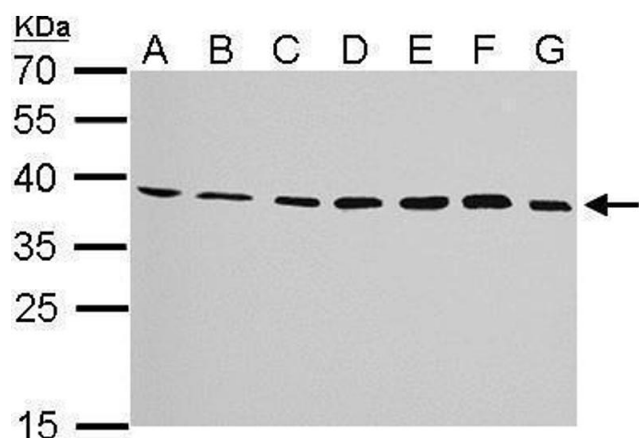
Buffer: 0.1M Tris-Glycine (pH 7), 10 % Glycerol, 0.01 % Thimerosal

Preservative: Thimerosal (Merthiolate)

Precaution of Use: This product contains Thimerosal (Merthiolate): a POISONOUS AND HAZARDOUS SUBSTANCE which should be handled by trained staff only.

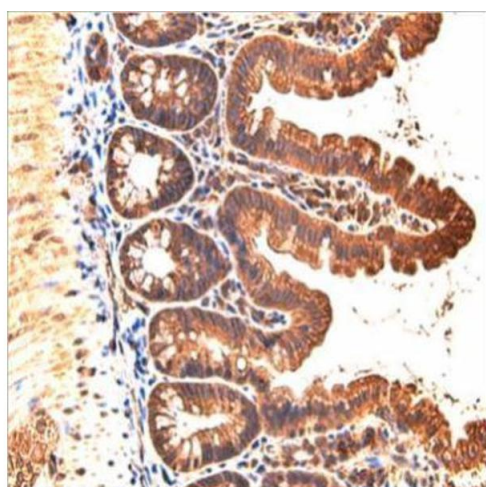
Storage: 4 °C, -20 °C

Storage Comment: Store as concentrated solution. Centrifuge briefly prior to opening vial. For short-term storage (1-2 weeks), store at 4°C. For long-term storage, aliquot and store at -20°C or below. Avoid multiple freeze-thaw cycles.



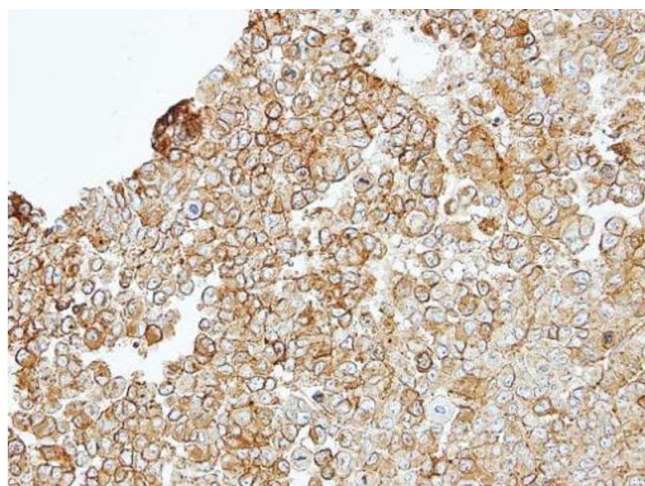
Western Blotting

Image 1. WB Image JAM-B antibody detects JAM2 protein by Western blot analysis. A. 30 µg Neuro2A whole cell lysate/extract B. 30 µg GL261 whole cell lysate/extract C. 30 µg C8D30 whole cell lysate/extract D. 30 µg NIH-3T3 whole cell lysate/extract E. 30 µg BCL-1 whole cell lysate/extract F. 30 µg Raw264.7 whole cell lysate/extract G. 30 µg C2C12 whole cell lysate/extract 12 % SDS-PAGE JAM-B antibody , dilution: 1:1000



Immunohistochemistry

Image 2. IHC-P Image Immunohistochemical analysis of paraffin-embedded mouse small intestine, using JAM-B, antibody at 1:200 dilution.(Image courtesy of Koji Taniguchi, Ph.D (Laboratory of Dr. Michael Karin, UCSD.)



Immunohistochemistry

Image 3. IHC-P Image Immunohistochemical analysis of paraffin-embedded TOV-112D xenograft, using JAM-B, antibody at 1:100 dilution.

Please check the [product details page](#) for more images. Overall 5 images are available for ABIN2855842.