

Datasheet for ABIN2855843

anti-IL1RAP antibody**2** Images[Go to Product page](#)

Overview

Quantity:	100 µL
Target:	IL1RAP
Reactivity:	Human
Host:	Rabbit
Clonality:	Polyclonal
Conjugate:	This IL1RAP antibody is un-conjugated
Application:	Western Blotting (WB), Immunohistochemistry (Paraffin-embedded Sections) (IHC (p))

Product Details

Immunogen:	Recombinant protein encompassing a sequence within the center region of human IL1RAP. The exact sequence is proprietary.
Isotype:	IgG
Cross-Reactivity:	Human, Mouse, Pig
Characteristics:	Rabbit Polyclonal antibody to IL1RAP (interleukin 1 receptor accessory protein) IL1RAP antibody [N1N3]
Purification:	Purified by antigen-affinity chromatography.

Target Details

Target:	IL1RAP
Alternative Name:	interleukin 1 receptor accessory protein (IL1RAP Products)

Target Details

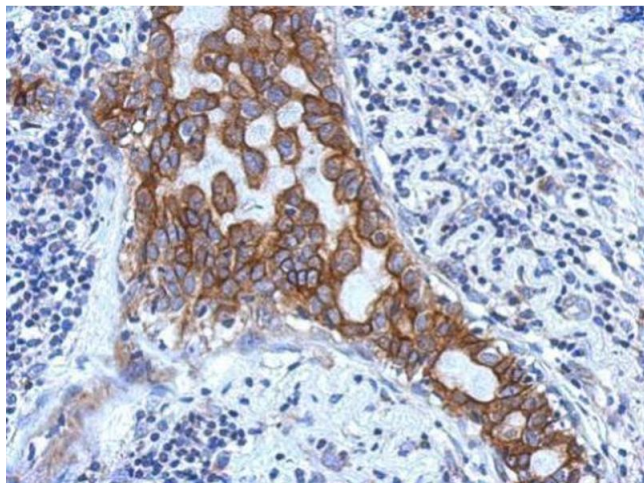
Background:	Interleukin 1 induces synthesis of acute phase and proinflammatory proteins during infection, tissue damage, or stress, by forming a complex at the cell membrane with an interleukin 1 receptor and an accessory protein. This gene encodes an interleukin 1 receptor accessory protein. Alternative splicing of this gene results in two transcript variants encoding two different isoforms, one membrane-bound and one soluble. Cellular Localization: Isoform 1: Cell membrane, Single-pass type I membrane protein , Isoform 2: Secreted , Isoform 3: Secreted
Molecular Weight:	65 kDa
Gene ID:	3556
UniProt:	Q9NPH3
Pathways:	NF-kappaB Signaling , Growth Factor Binding

Application Details

Application Notes:	WB: 1:500-1:3000. IHC-P: 1:100-1:1000. Optimal dilutions/concentrations should be determined by the researcher. Not tested in other applications.
Comment:	Positive Control: mouse liver , HepG2 membrane extract Validation: Orthogonal
Restrictions:	For Research Use only

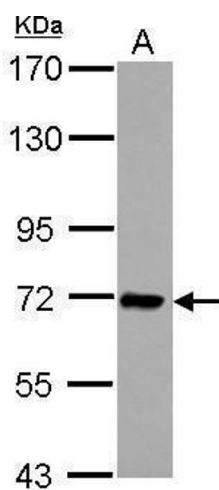
Handling

Format:	Liquid
Concentration:	0.36 mg/mL
Buffer:	1XPBS (pH 7), 1 % BSA, 20 % Glycerol, 0.025 % ProClin 300
Preservative:	ProClin
Precaution of Use:	This product contains ProClin: a POISONOUS AND HAZARDOUS SUBSTANCE which should be handled by trained staff only.
Storage:	4 °C, -20 °C
Storage Comment:	Store as concentrated solution. Centrifuge briefly prior to opening vial. For short-term storage (1-2 weeks), store at 4°C. For long-term storage, aliquot and store at -20°C or below. Avoid multiple freeze-thaw cycles.



Immunohistochemistry

Image 1. IHC-P Image Immunohistochemical analysis of paraffin-embedded human breast cancer, using IL1RAP, antibody at 1:500 dilution.



Western Blotting

Image 2. WB Image Sample (30 ug of whole cell lysate) A: Jurkat 7.5% SDS PAGE antibody diluted at 1:1000