

Datasheet for ABIN2855844
anti-SERPINB1 antibody (Center)



[Go to Product page](#)

1 Image

Overview

Quantity:	100 µL
Target:	SERPINB1
Binding Specificity:	Center
Reactivity:	Human
Host:	Rabbit
Clonality:	Polyclonal
Conjugate:	This SERPINB1 antibody is un-conjugated
Application:	Western Blotting (WB)

Product Details

Immunogen:	Recombinant protein encompassing a sequence within the center region of human M/NEI. The exact sequence is proprietary.
Isotype:	IgG
Characteristics:	Rabbit polyclonal antibody to M/NEI (serpin peptidase inhibitor, clade B (ovalbumin), member 1) M/NEI antibody [N1C2]
Purification:	Purified by antigen-affinity chromatography.

Target Details

Target:	SERPINB1
Alternative Name:	M/NEI (SERPINB1 Products)

Target Details

Background: Regulates the activity of the neutrophil proteases elastase, cathepsin G, proteinase-3, chymase, chymotrypsin, and kallikrein-3.

Cellular Localization: Cytoplasm

Molecular Weight: 43 kDa

Gene ID: 1992

Application Details

Application Notes: Suggested dilution Reference Western blot 1:500-1:3000* Not tested in other applications.
Optimal dilutions/concentrations should be determined by the researcher.Suggested dilutionReferenceWestern blot1:500-1:3000

Comment: Positive Control: 293T , A431 , H1299 , HeLaS3 , HepG2

Restrictions: For Research Use only

Handling

Format: Liquid

Concentration: 1.01 mg/mL

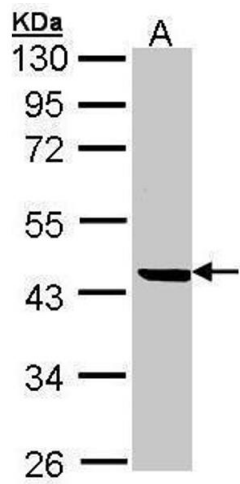
Buffer: 0.1M Tris, 0.1M Glycine, 10 % Glycerol (pH 7). 0.01 % Thimerosal was added as a preservative.

Preservative: Thimerosal (Merthiolate)

Precaution of Use: This product contains Thimerosal (Merthiolate): a POISONOUS AND HAZARDOUS SUBSTANCE which should be handled by trained staff only.

Storage: -20 °C

Storage Comment: Keep as concentrated solution. Aliquot and store at -20°C or below. Avoid multiple freeze-thaw cycles.



Western Blotting

Image 1. WB Image Sample (30 ug of whole cell lysate) A:
293T 12% SDS PAGE antibody diluted at 1:500